

**Datasheet for 209-401-J33****IL-22 Antibody****Overview**

<b>Description:</b>	Anti-Human IL-22 (RABBIT) Antibody - 209-401-J33
<b>Item No.:</b>	209-401-J33
<b>Size:</b>	100 µg
<b>Applications:</b>	WB
<b>Reactivity:</b>	Human
<b>Host Species:</b>	Rabbit

**Product Details**

<b>Background:</b>	Interleukin-22 (IL-22) is a member of a group of cytokines called IL-10 family member, produced by activated dendritic cells and T lymphocytes. IL-22 inhibits IL-4 production by Th2 cells, and induces acute phase reactants in the liver and pancreas. IL-22 signals via the IL-22R and IL-10Rβ receptors to act as a potent mediator of the cellular inflammatory response. Recombinant human IL-22 is a non-disulfide-linked homodimer with a total molecular weight of 33.6 kDa. Anti-IL-22 antibody is ideal for researchers interested in cytokines and stem cell research.
<b>Synonyms:</b>	rabbit anti-IL-22 antibody, rabbit anti-interleukin-22 antibody, Interleukin22, IL22, ILTIF, ZCYTO18, IL22, Cytokine Zcyto18, IL-10-related T-cell-derived-inducible factor
<b>Host Species:</b>	Rabbit
<b>Clonality:</b>	Polyclonal
<b>Format:</b>	IgG

**Target Details**

<b>Gene Name:</b>	IL22
<b>Reactivity:</b>	Human
<b>Immunogen Type:</b>	Recombinant Protein
<b>Immunogen:</b>	Anti-IL-22 antibody was prepared from rabbit antiserum after repeated immunizations with a truncated form of recombinant human IL-22 protein from E. coli.

**Purity/Specificity:** Anti-IL-22 is an IgG fraction antibody purified from monospecific antiserum by a multi-step process which includes delipidation, salt fractionation and ion exchange chromatography followed by extensive dialysis against the buffer stated above. This antibody is specific for human IL-22 protein. A BLAST analysis was used to suggest cross-reactivity with IL-22 from human sources based on 100% homology with the immunizing sequence. Cross-reactivity with IL-22 from other sources has not been determined.

**Relevant Links:**

- [UniProtKB - Q9GZX6](#)
- [NCBI - NP\\_065386.1](#)
- [GeneID - 50616](#)

## Application Details

**Tested Applications:** WB

**Application Note:** IL-22 purified antibody has been tested in western blotting and suitable for ELISA. Specific conditions for reactivity should be optimized by the end user. Expect a band approximately 20 kDa in size corresponding to the human IL-22 protein by western blotting in appropriate cell lysate or extract.

**Assay Dilutions:** All assays should be optimized by the user. Recommended dilutions (if any) may be listed below.

**ELISA:** 1:20,000 - 1:50,000

**WB:** 1:1000-1:2000

## Formulation

**Physical State:** Liquid (sterile filtered)

**Concentration:** 1.0 mg/mL by UV absorbance at 280 nm

**Buffer:** 0.02 M Potassium Phosphate, 0.15 M Sodium Chloride, pH 7.2

**Preservative:** 0.01% (w/v) Sodium Azide

**Stabilizer:** None

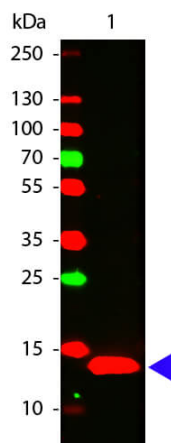
## Shipping & Handling

**Shipping Condition:** Dry Ice

**Storage Condition:** Store vial at -20° C prior to opening. Aliquot contents and freeze at -20° C or below for extended storage. Avoid cycles of freezing and thawing. Centrifuge product if not completely clear after standing at room temperature. This product is stable for several weeks at 4° C as an undiluted liquid. Dilute only prior to immediate use.

**Expiration:** Expiration date is one (1) year from date of receipt.

## Images



### Western Blot

Western Blot of Rabbit anti-IL-22 antibody. Lane 1: Human IL-22 Recombinant Protein. Load: 50 ng per lane. Primary antibody: IL-22 antibody at 1:1,000 for overnight at 4°C. Secondary antibody: DyLight™ 649 rabbit secondary antibody (611-143-002) at 1:20,000 for 30 min at RT. Block: MB-070 for 30 min at RT. Predicted/Observed size: 14 kDa, 14 kDa for Human IL-22. Other band(s): None.

## Disclaimer

This product is for research use only and is not intended for therapeutic or diagnostic applications. Please contact a technical service representative for more information. All products of animal origin manufactured by Rockland Immunochemicals are derived from starting materials of North American origin. Collection was performed in United States Department of Agriculture (USDA) inspected facilities and all materials have been inspected and certified to be free of disease and suitable for exportation. All properties listed are typical characteristics and are not specifications. All suggestions and data are offered in good faith but without guarantee as conditions and methods of use of our products are beyond our control. All claims must be made within 30 days following the date of delivery. The prospective user must determine the suitability of our materials before adopting them on a commercial scale. Suggested uses of our products are not recommendations to use our products in violation of any patent or as a license under any patent of Rockland Immunochemicals, Inc. If you require a commercial license to use this material and do not have one, then return this material, unopened to: Rockland Inc., P.O. BOX 5199, Limerick, Pennsylvania, USA.