

Datasheet for 209-401-H48S**TSLP Antibody****Overview**

Description:	Anti-TSLP (RABBIT) Antibody - 209-401-H48S
Item No.:	209-401-H48S
Size:	25 µL
Applications:	WB
Reactivity:	Human
Host Species:	Rabbit

Product Details

Background: Thymic Stromal Lymphopoietin (TSLP) is a hematopoietic cytokine. TSLP is mainly expressed in the heart, liver and prostate. TSLP sends signals through a heterodimeric receptor complex, containing the TSLP-R and the IL-7R α chain to induce the release of T cell-attracting chemokines from monocytes. It can induce allergic inflammation by directly activating mast cells. It also promotes T helper type 2 (TH2) cell responses associated with immunity, including atopic dermatitis and asthma, and can promote TH2 cytokine-associated inflammation by directly promoting the effector functions of CD4+ TH2 cells, basophils and other granulocyte populations while simultaneously limiting the expression of dendritic cells derived proinflammatory cytokines and promoting regulatory T cell responses in peripheral tissues. Recombinant human TSLP is a non-glycosylated protein with a molecular weight of 15 kDa. Anti-TSLP antibody is ideal for researchers interested in cytokines and stem cell research.

Synonyms:	rabbit anti-TSLP antibody, rabbit anti-Thymic Stromal Lymphopoietin antibody
Host Species:	Rabbit
Clonality:	Polyclonal
Format:	IgG

Target Details

Gene Name:	TSLP
Reactivity:	Human
Immunogen Type:	Recombinant Protein

Immunogen:	Anti-TSLP antibody was prepared from rabbit antiserum after repeated immunizations with a truncated form of recombinant human TSLP protein from E. coli.
Purity/Specificity:	Anti-TSLP is an IgG fraction antibody purified from monospecific antiserum by a multi-step process which includes delipidation, salt fractionation and ion exchange chromatography followed by extensive dialysis against the buffer stated above. This antibody is specific for human TSLP protein. A BLAST analysis was used to suggest cross-reactivity with TSLP from human sources based on 100% homology with the immunizing sequence. Cross-reactivity with TSLP from other sources has not been determined.
Relevant Links:	<ul style="list-style-type: none">• UniProtKB - Q969D9• NCBI - NP_149024.1• GeneID - 85480

Application Details

Tested Applications:	WB
Application Note:	TSLP purified antibody has been tested in western blotting and suitable for ELISA. Specific conditions for reactivity should be optimized by the end user. Expect a band approximately 18 kDa in size corresponding to the human TSLP protein by western blotting in appropriate cell lysate or extract.
Assay Dilutions:	All assays should be optimized by the user. Recommended dilutions (if any) may be listed below.
ELISA:	1:20,000 - 1:50,000
WB:	1:1000-1:2000

Formulation

Physical State:	Liquid (sterile filtered)
Concentration:	1.0 mg/mL by UV absorbance at 280 nm
Buffer:	0.02 M Potassium Phosphate, 0.15 M Sodium Chloride, pH 7.2
Preservative:	0.01% (w/v) Sodium Azide
Stabilizer:	None

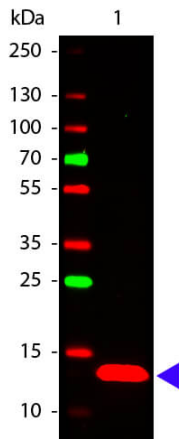
Shipping & Handling

Shipping Condition:	Dry Ice
----------------------------	---------

Storage Condition: Store vial at -20° C or below prior to opening. This vial contains a relatively low volume of reagent (25 µL). To minimize loss of volume dilute 1:10 by adding 225 µL of the buffer stated above directly to the vial. Recap, mix thoroughly and briefly centrifuge to collect the volume at the bottom of the vial. Use this intermediate dilution when calculating final dilutions as recommended below. Store the vial at -20°C or below after dilution. Avoid cycles of freezing and thawing.

Expiration: Expiration date is one (1) year from date of receipt.

Images



Western Blot

Western Blot of Rabbit anti-TSLP antibody. Lane 1: Human TSLP Recombinant Protein. Load: 50 ng per lane. Primary antibody: TSLP antibody at 1:1,000 for overnight at 4°C. Secondary antibody: DyLight™ 649 rabbit secondary antibody (611-143-002) at 1:20,000 for 30 min at RT. Block: MB-070 for 30 min at RT. Predicted/Observed size: 13 kDa, 13 kDa for Human TSLP. Other band(s): None.

Disclaimer

This product is for research use only and is not intended for therapeutic or diagnostic applications. Please contact a technical service representative for more information. All products of animal origin manufactured by Rockland Immunochemicals are derived from starting materials of North American origin. Collection was performed in United States Department of Agriculture (USDA) inspected facilities and all materials have been inspected and certified to be free of disease and suitable for exportation. All properties listed are typical characteristics and are not specifications. All suggestions and data are offered in good faith but without guarantee as conditions and methods of use of our products are beyond our control. All claims must be made within 30 days following the date of delivery. The prospective user must determine the suitability of our materials before adopting them on a commercial scale. Suggested uses of our products are not recommendations to use our products in violation of any patent or as a license under any patent of Rockland Immunochemicals, Inc. If you require a commercial license to use this material and do not have one, then return this material, unopened to: Rockland Inc., P.O. BOX 5199, Limerick, Pennsylvania, USA.