

Datasheet for 209-401-314**GM-CSF Antibody****Overview**

Description:	Anti-GM-CSF (RABBIT) Antibody - 209-401-314
Item No.:	209-401-314
Size:	100 µg
Applications:	WB
Reactivity:	Human
Host Species:	Rabbit

Product Details

Background:	Granulocyte Macrophage Colony Stimulating Factor (also known as GM-CSF, Colony-stimulating factor; CSF, sargramostim and molgramostin) is produced in response to a number of inflammatory mediators by mesenchymal cells present in the hemopoietic environment and at peripheral sites of inflammation. Granulocyte Macrophage-CSF is able to stimulate the production of neutrophilic granulocytes, macrophages, and mixed granulocyte-macrophage colonies from bone marrow cells and can stimulate the formation of eosinophil colonies from fetal liver progenitor cells. GM-CSF can also stimulate some functional activities in mature granulocytes and macrophages. GM-CSF receptors show significant homologies with other receptors for hematopoietic growth factors, including IL2-beta, IL-3, IL-6, IL-7, EPO and the Prolactin receptors.
Synonyms:	rabbit anti-GM-CSF Antibody, GM-CSF, rabbit anti-Colony-stimulating factor, CSF, sargramostim and molgramostin
Host Species:	Rabbit
Clonality:	Polyclonal
Format:	IgG

Target Details

Gene Name:	CSF2
Reactivity:	Human
Immunogen Type:	Recombinant Protein

Immunogen:	This purified antibody was prepared from whole rabbit serum produced by repeated immunizations with full length recombinant human GM-CSF protein.
Purity/Specificity:	This purified antibody has been heated to 56°C for 30 minutes. In ELISA and other immunoreactive assays, this antibody will recognize both native and recombinant human GM-CSF in cell supernatants and certain body fluids. This antibody is useful for neutralization of human GM-CSF in bioassays. For neutralization, it is recommended to incubate the sample with a 1:400 dilution of the antiserum for at least 4 hours before being tested. A control of similarly diluted normal rabbit IgG is recommended.
Relevant Links:	<ul style="list-style-type: none">• NCBI - NP_000749.2• UniProtKB - P04141• GenelD - 1437

Application Details

Tested Applications:	WB
Application Note:	This purified antibody has been tested for use in western blotting. Reactivity is also expected in neutralizations, ELISA, radioimmunoassay and immunohistochemistry. The endotoxin content is estimated to be <10 pg/μl by the LAL method. By western blot a band approximately 14.5 kDa in size corresponding to human GM-CSF protein is expected in the appropriate cell lysate or extract. Specific conditions for reactivity should be optimized by the end user.
Assay Dilutions:	All assays should be optimized by the user. Recommended dilutions (if any) may be listed below.
ELISA:	1:1,000 - 1:5,000
WB:	1:500 - 1:2,000

Formulation

Physical State:	Lyophilized
Concentration:	1.0 mg/mL
Buffer:	0.02 M Potassium Phosphate, 0.15 M Sodium Chloride, pH 7.2
Preservative:	None
Stabilizer:	None
Reconstitution Volume:	100 μL
Reconstitution Buffer:	Restore with deionized water (or equivalent)

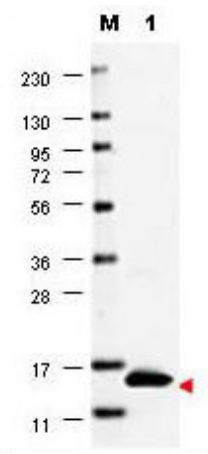
Shipping & Handling

Shipping Condition: Ambient

Storage Condition: Store vial at 4° C prior to restoration. For extended storage aliquot contents and freeze at -20° C or below. Avoid cycles of freezing and thawing. Centrifuge product if not completely clear after standing at room temperature. This product is stable for several weeks at 4° C as an undiluted liquid. Dilute only prior to immediate use.

Expiration: Expiration date is one (1) year from date of receipt.

Images



Western Blot

Western blot using Rockland's anti-Human GM-CSF antibody shows detection of a band ~15 kDa in size corresponding to recombinant human GM-CSF (lane 1). Molecular weight markers are also shown (M). After transfer, the membrane was blocked overnight with 3% BSA in TBS followed by reaction with primary antibody at a 1:1,000 dilution. Detection occurred using DyLight™649 conjugated anti-Rabbit IgG (p/n 611-143-122) secondary antibody diluted 1:20,000 in blocking buffer (p/n MB-070). Image was captured using VersaDoc™ MP 4000 imaging system (Bio-Rad).

Disclaimer

This product is for research use only and is not intended for therapeutic or diagnostic applications. Please contact a technical service representative for more information. All products of animal origin manufactured by Rockland Immunochemicals are derived from starting materials of North American origin. Collection was performed in United States Department of Agriculture (USDA) inspected facilities and all materials have been inspected and certified to be free of disease and suitable for exportation. All properties listed are typical characteristics and are not specifications. All suggestions and data are offered in good faith but without guarantee as conditions and methods of use of our products are beyond our control. All claims must be made within 30 days following the date of delivery. The prospective user must determine the suitability of our materials before adopting them on a commercial scale. Suggested uses of our products are not recommendations to use our products in violation of any patent or as a license under any patent of Rockland Immunochemicals, Inc. If you require a commercial license to use this material and do not have one, then return this material, unopened to: Rockland Inc., P.O. BOX 5199, Limerick, Pennsylvania, USA.