

Datasheet for 209-301-E16

Progesterone Receptor phospho S190 Antibody

Overview

Description:	Anti-Progesterone Receptor pS190 (MOUSE) Monoclonal Antibody - 209-301-E16
Item No.:	209-301-E16
Size:	100 µL
Applications:	IHC, WB
Reactivity:	Human
Host Species:	Mouse

Product Details

Background:	There is accumulating evidence to suggest that progesterone plays an essential role in the regulation of growth and differentiation of mammary glands and thus may play a key role in breast cancer. The biological response to progesterone is mediated by two distinct forms of the human progesterone receptor (PR-A and PR-B forms). In most cell contexts, the B form functions as a transcriptional activator, whereas the A form functions as a transcriptional inhibitor of steroid hormones. Recently it has been demonstrated that there is differential hormone dependent regulation of the phosphorylation of the A and B forms of the receptor. Treatment of T47D breast cancer cells with progestin agonist increases the phosphorylation of Ser190 and Ser294 with different kinetics. These phosphorylation events may differentially affect the transcriptional activity of the receptor. Anti-Progesterone Receptor pS190 (Mouse) Monoclonal Antibody is ideal for investigators involved in Cell Signaling, Neuroscience, and Cancer research.
Synonyms:	mouse anti-Progesterone Receptor phospho S190 Antibody, mouse anti-Progesterone Receptor pS190 Antibody, PR, Nuclear receptor subfamily 3 group C member 3
Host Species:	Mouse
Clonality:	Monoclonal
Clone ID:	1154
Format:	IgG1

Target Details

Gene Name:	PGR
-------------------	-----

Reactivity:	Human
PTM Specificity:	Phosphorylation
Immunogen Type:	Conjugated Peptide
Immunogen:	Anti-Progesterone Receptor pS190 Monoclonal Antibody was produced in mouse by repeated immunizations with Progesterone Receptor- Synthetic peptide corresponding to amino acid residues surrounding Ser190 conjugated to KLH.
Purity/Specificity:	Anti-Progesterone Receptor pS190 Monoclonal Antibody is Protein G purified from cell culture supernatant. This phospho specific monoclonal antibody is specific for phosphorylated human progesterone receptor pS190. Immunolabeling is blocked by the phosphopeptide used as antigen but not by the corresponding dephosphopeptide. BLAST analysis suggests cross-reactivity with progesterone receptor from mouse, rat and non-human primates based on 100% sequence homology.
Relevant Links:	<ul style="list-style-type: none">• UniProtKB - P06401• GeneID - 5241• NCBI - AAA60081.1

Application Details

Tested Applications:	IHC, WB
Application Note:	Anti-Progesterone Receptor pS190 (Mouse) antibody is tested for use in Western Blot and IHC. Expect a band of approximately 90 kDa in size for PR-A isoform and approximately 120 kDa in size for the PR-B isoform phosphorylated at Ser190 in Western Blotting in the appropriate cell lysate or extract. Specific conditions for reactivity should be optimized by the end user.
Assay Dilutions:	All assays should be optimized by the user. Recommended dilutions (if any) may be listed below.
IHC:	1:1000
WB:	1:1000

Formulation

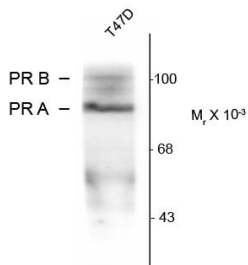
Physical State:	Liquid
Buffer:	0.01 M HEPES, 0.15 M Sodium Chloride, pH 7.5
Stabilizer:	0.1 mg/ml Bovine Serum Albumin (BSA) - IgG and Protease free, 50% (v/v) Glycerol

Shipping & Handling

Shipping Condition:	Dry Ice
Storage Condition:	Store vial at -20° C prior to opening. Aliquot contents and freeze at -20° C or below for extended storage. Avoid cycles of freezing and thawing. Centrifuge product if not completely clear after standing at room temperature. This product is stable for several weeks at 4° C as an undiluted liquid. Dilute only prior to immediate use.
Expiration:	Expiration date is one (1) year from date of receipt.

Images

Anti-Phospho-Ser¹⁹⁰ Progesterone Receptor



Western blot of whole cell T47D lysate prepared from cells that had been incubated in the presence of synthetic progestin agonist R5020(500nm) showing phosphospecific immunolabeling of the ~90k PR-A isoform and the ~120k PR-B isoform of the progesterone receptor phosphorylated at Ser¹⁹⁰.

Western Blot

Western Blot of Mouse anti-Progesterone Receptor pS190 antibody. Lane 1: whole cell T47D lysate prepared from cells that had been incubated in the presence of the synthetic progestin agonist R5020 (500 nM). Lane 2: none. Load: 10 µg per lane. Primary antibody: Progesterone Receptor pS190 antibody at 1:1,000 for overnight at 4°C. Secondary antibody: IRDye800™ mouse secondary antibody at 1:10,000 for 45 min at RT. Block: 5% BLOTTO overnight at 4°C. Predicted/Observed size: 90 kDa for Progesterone Receptor pS190. Other band(s): Progesterone Receptor pS190 splice variants and isoforms.

Disclaimer

This product is for research use only and is not intended for therapeutic or diagnostic applications. Please contact a technical service representative for more information. All products of animal origin manufactured by Rockland Immunochemicals are derived from starting materials of North American origin. Collection was performed in United States Department of Agriculture (USDA) inspected facilities and all materials have been inspected and certified to be free of disease and suitable for exportation. All properties listed are typical characteristics and are not specifications. All suggestions and data are offered in good faith but without guarantee as conditions and methods of use of our products are beyond our control. All claims must be made within 30 days following the date of delivery. The prospective user must determine the suitability of our materials before adopting them on a commercial scale. Suggested uses of our products are not recommendations to use our products in violation of any patent or as a license under any patent of Rockland Immunochemicals, Inc. If you require a commercial license to use this material and do not have one, then return this material, unopened to: Rockland Inc., P.O. BOX 5199, Limerick, Pennsylvania, USA.