

**Datasheet for 209-301-B32S****IL-17A Antibody****Overview**

<b>Description:</b>	Anti-Human IL-17A (MOUSE) Monoclonal Antibody - 209-301-B32S
<b>Item No.:</b>	209-301-B32S
<b>Size:</b>	25 µL
<b>Applications:</b>	WB
<b>Reactivity:</b>	Human
<b>Host Species:</b>	Mouse

**Product Details**

<b>Background:</b>	IL17-A (also known as Interleukin-17) is a proinflammatory cytokine produced by activated T cells. This cytokine regulates the activities of NF-kappaB and mitogen-activated protein kinases. This cytokine can stimulate the expression of IL6 and cyclooxygenase-2 (PTGS2/COX-2), as well as enhance the production of nitric oxide (NO). High levels of this cytokine are associated with several chronic inflammatory diseases including rheumatoid arthritis, psoriasis and multiple sclerosis. IL17-A is the founding member of a group of cytokines called the IL-17 family. IL17-A was originally identified as a transcript from a rodent T-cell hybridoma. To elicit its functions, IL17 binds to a type I cell surface receptor called IL17R of which there are at least three variants IL17RA, IL17RB, and IL17RC. Anti-IL-17A antibody is ideal for investigators involved in Immunology research.
<b>Synonyms:</b>	mouse anti-Interleukin-17A antibody, mouse anti-IL-17A antibody, IL-17A, Interleukin-17A, Cytotoxic T-Lymphocyte-associated Antigen 8, CTLA8, Interleukin-17, IL17, IL-17, Interleukin17
<b>Host Species:</b>	Mouse
<b>Clonality:</b>	Monoclonal
<b>Clone ID:</b>	4H1524.1
<b>Format:</b>	IgG2b

**Target Details**

<b>Gene Name:</b>	IL17A
<b>Reactivity:</b>	Human

<b>Immunogen Type:</b>	Recombinant Protein
<b>Immunogen:</b>	Anti-IL-17A (MOUSE) Monoclonal Antibody was produced in mouse by repeated immunizations with mature full length recombinant human IL-17A produced in E.coli followed by hybridoma development.
<b>Purity/Specificity:</b>	Anti-Human IL-17A (MOUSE) Monoclonal Antibody was purified from concentrated tissue culture supernate by Protein G chromatography followed by extensive dialysis against the buffer stated above. This antibody is specific for human IL-17A protein. A BLAST analysis was used to suggest cross-reactivity with IL-17A from human sources based on 100% homology with the immunizing sequence. Cross-reactivity with IL-17A from other sources has not been determined.
<b>Relevant Links:</b>	<ul style="list-style-type: none"><li>• <a href="#">GenelD - 3605</a></li><li>• <a href="#">NCBI</a></li><li>• <a href="#">UniProtKB - Q16552</a></li></ul>

## Application Details

<b>Tested Applications:</b>	WB
<b>Application Note:</b>	Anti-Human IL-17A antibody has been tested for use in Western Blot and suitable for FLOW. Specific conditions for reactivity should be optimized by the end user.
<b>Assay Dilutions:</b>	All assays should be optimized by the user. Recommended dilutions (if any) may be listed below.
<b>ELISA:</b>	1:10,000 - 1:50,000
<b>FC:</b>	User Optimized
<b>WB:</b>	1µg/mL

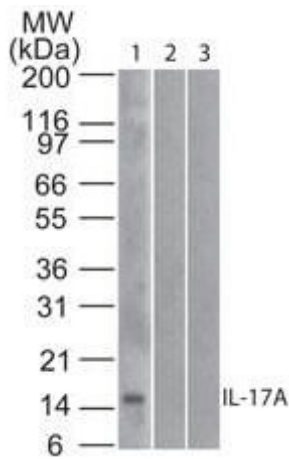
## Formulation

<b>Physical State:</b>	Liquid (sterile filtered)
<b>Concentration:</b>	1.0mg/mL by UV absorbance at 280 nm
<b>Buffer:</b>	0.02 M Potassium Phosphate, 0.15 M Sodium Chloride, pH 7.2
<b>Preservative:</b>	0.01% (w/v) Sodium Azide
<b>Stabilizer:</b>	None

## Shipping & Handling

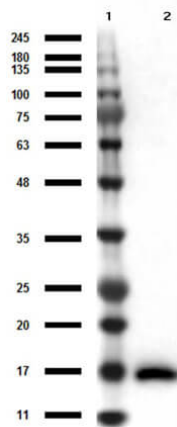
<b>Shipping Condition:</b>	Dry Ice
<b>Storage Condition:</b>	Store vial at -20° C or below prior to opening. This vial contains a relatively low volume of reagent (25 µL). To minimize loss of volume dilute 1:10 by adding 225 µL of the buffer stated above directly to the vial. Recap, mix thoroughly and briefly centrifuge to collect the volume at the bottom of the vial. Use this intermediate dilution when calculating final dilutions as recommended below. Store the vial at -20°C or below after dilution. Avoid cycles of freezing and thawing.
<b>Expiration:</b>	Expiration date is one (1) year from date of receipt.

## Images



### Western Blot

Western Blot of Mouse Anti-IL-17A antibody. Lane 1: human full length recombinant IL-17A protein. Lane 2: mouse full length recombinant IL-17A protein. Lane 3: rat full length recombinant IL-17A protein. Load: 20 ng/lane. Primary antibody: Anti-IL-17A antibody at 1µg/mL for overnight at 4°C.



### Western Blot

Western Blot results of Mouse Anti-IL-17A Antibody. Lane 1: Opal Prestained Molecular Weight Ladder (p/n MB-210-0500). Lane 2: IL-17A. Load: 50ng. Primary Antibody: Mouse Anti-IL-17A at 1µg/mL overnight at 4°C. Secondary Antibody: Rabbit anti-Mouse HRP (p/n 610-403-C26) at 1:40,000 for 30min at RT. Blocking: BlockOut (p/n MB-073) for 30 min at RT.

## Disclaimer

This product is for research use only and is not intended for therapeutic or diagnostic applications. Please contact a technical service representative for more information. All products of animal origin manufactured by Rockland Immunochemicals are derived from starting materials of North American origin. Collection was performed in United States Department of Agriculture (USDA) inspected facilities and all materials have been inspected and certified to be free of disease and suitable for exportation. All properties listed are typical characteristics and are not specifications. All suggestions and data are offered in good faith but without guarantee as conditions and methods of use of our products are beyond our control. All claims must be made within 30 days following the date of delivery. The prospective user must determine the suitability of our materials before adopting them on a commercial scale. Suggested uses of our products are not recommendations to use our products in violation of any patent or as a license under any patent of Rockland Immunochemicals, Inc. If you require a commercial license to use this material and do not have one, then return this material, unopened to: Rockland Inc., P.O. BOX 5199, Limerick, Pennsylvania, USA.