

**Datasheet for 201-301-033****Bovine Serum Albumin Antibody****Overview**

|                      |   |
|----------------------|---|
| <b>Description:</b>  | Anti-Bovine Serum Albumin (MOUSE) Monoclonal Antibody - 201-301-033 |
| <b>Item No.:</b>     | 201-301-033   |
| <b>Size:</b>         | 500 µg  |
| <b>Applications:</b> | ELISA, WB   |
| <b>Reactivity:</b>   | Bovine  |
| <b>Host Species:</b> | Mouse   |

**Product Details**

|                      |  |
|----------------------|--|
| <b>Background:</b>   | Bovine Serum Albumin antibody detects BSA. Serum albumin is the main protein of plasma. It has a good binding capacity for water, Ca <sup>2+</sup> , Na <sup>+</sup> , K <sup>+</sup> , fatty acids, hormones, bilirubin and drugs. Its main function is the regulation of the colloidal osmotic pressure of blood. ALB is the major zinc transporter in plasma; it typically binds about 80% of all plasma zinc. BSA antibody is ideal for investigators involved in Cell Signaling, Neuroscience and Signal Transduction research. |
| <b>Synonyms:</b>     | mouse anti-Bovine Serum Albumin Antibody, mouse anti-BSA Antibody, ALB antibody, Albumin antibody, Allergen Bos d 6 antibody, BSA antibody   |
| <b>Host Species:</b> | Mouse  |
| <b>Clonality:</b>    | Monoclonal   |
| <b>Clone ID:</b>     | 5F9  |
| <b>Format:</b>       | IgG1   |

**Target Details**

|                        |   |
|------------------------|---|
| <b>Gene Name:</b>      | ALB   |
| <b>Reactivity:</b>     | Bovine  |
| <b>Immunogen Type:</b> | Native Protein  |
| <b>Immunogen:</b>      | Anti-Bovine Serum Albumin antibody was produced by repeated immunizations of balb/c mice with bovine serum albumin. |

**Purity/Specificity:** Bovine Serum Albumin monoclonal antibody was purified from concentrated tissue culture supernate by Protein A chromatography and reacts with bovine serum albumin. The antibody recognizes a 66 kDa band corresponding to bovine serum albumin monomer. No cross reactivity is detected against other serum proteins by immunoblot. No reactivity is detected by ELISA against human serum albumin or ovalbumin.

**Relevant Links:**

- [NCBI - AAA51411.1](#)
- [UniProtKB - P02769](#)
- [GeneID - 280717](#)

## Application Details

**Tested Applications:** ELISA, WB

**Application Note:** Anti-Bovine Serum Albumin antibody has been tested by ELISA and Western Blot. The antibody may be suitable for other applications, although no supporting data is available.

**Assay Dilutions:** All assays should be optimized by the user. Recommended dilutions (if any) may be listed below.

**ELISA:** 1:120,000

**IHC:** 1:1,000 - 1:5,000

**IP:** 1:100

**WB:** 1:2,000 - 1:10,000

## Formulation

**Physical State:** Liquid (sterile filtered)

**Concentration:** 1.004 mg/mL by UV absorbance at 280 nm

**Buffer:** 0.02 M Potassium Phosphate, 0.15 M Sodium Chloride, pH 7.2

**Preservative:** 0.01% (w/v) Sodium Azide

**Stabilizer:** None

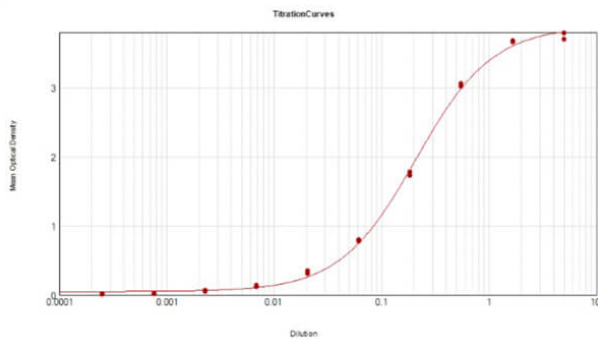
## Shipping & Handling

**Shipping Condition:** Dry Ice

**Storage Condition:** Store vial at -20° C prior to opening. Aliquot contents and freeze at -20° C or below for extended storage. Avoid cycles of freezing and thawing. Centrifuge product if not completely clear after standing at room temperature. This product is stable for several weeks at 4° C as an undiluted liquid. Dilute only prior to immediate use.

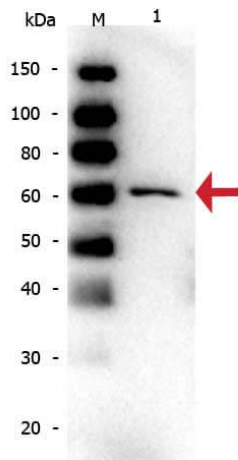
**Expiration:** Expiration date is one (1) year from date of receipt.

## Images



### ELISA

ELISA Results of Mouse Anti-BSA Antibody. Each well was coated in duplicate with 10 µg of Bovine Serum Albumin. The working dilution is 1:85,300. The starting dilution of antibody was 5µg/ml and the X-axis represents the Log10 of a 3-fold dilution. This titration is a 4-parameter curve fit where the IC50 is defined as the titer of the antibody. Assay performed using 3% Fish Gel/PBS Blocking buffer (p/n MB-066), Rabbit Anti-Mouse HRP conjugated (p/n 610-403-C46) and TMB substrate (p/n TMBE-1000).



### Western Blot

Western Blot of Mouse anti-Bovine Serum Albumin Monoclonal Antibody. Lane 1: Bovine Serum Albumin. Load: 50 ng per lane. Primary antibody: Bovine Serum Albumin antibody at 1:1,000 for overnight at 4°C. Secondary antibody: Peroxidase mouse secondary antibody at 1:40,000 for 30 min at RT. Block: 0.75% Casein for 30 min at RT. Predicted/Observed size: 60 kDa, 60 kDa for Bovine Serum Albumin.

## Disclaimer

This product is for research use only and is not intended for therapeutic or diagnostic applications. Please contact a technical service representative for more information. All products of animal origin manufactured by Rockland Immunochemicals are derived from starting materials of North American origin. Collection was performed in United States Department of Agriculture (USDA) inspected facilities and all materials have been inspected and certified to be free of disease and suitable for exportation. All properties listed are typical characteristics and are not specifications. All suggestions and data are offered in good faith but without guarantee as conditions and methods of use of our products are beyond our control. All claims must be made within 30 days following the date of delivery. The prospective user must determine the suitability of our materials before adopting them on a commercial scale. Suggested uses of our products are not recommendations to use our products in violation of any patent or as a license under any patent of Rockland Immunochemicals, Inc. If you require a commercial license to use this material and do not have one, then return this material, unopened to: Rockland Inc., P.O. BOX 5199, Limerick, Pennsylvania, USA.