

Datasheet for 200-901-Y17**ANKLE2 Antibody****Overview**

Description:	Anti-ANKLE2 (CHICKEN) Antibody - 200-901-Y17
Item No.:	200-901-Y17
Size:	100 µg
Applications:	ELISA, WB
Reactivity:	Human, Mouse, Rat
Host Species:	Chicken

Product Details

Background:	Ankyrins are membrane adaptor molecules that play important roles in coupling integral membrane proteins to the spectrin-based cytoskeleton network. ANKLE2 (Ankyrin repeat and LEM domain containing 2) is a member of ankyrin repeat and LEM domain containing family. It is a potential single-pass membrane protein that contains three ankyrin repeats and a Lem domain. Ankyrin repeats mediate protein-protein interactions and are among the most common structural motifs in known proteins. The function of this protein is still under investigation.
Synonyms:	ANKLE2 Antibody, Lem4, LEMD7, KIAA0692, LEM4, Ankyrin repeat and LEM domain-containing protein 2, LEM domain-containing protein 4
Host Species:	Chicken
Clonality:	Polyclonal
Format:	IgY

Target Details

Gene Name:	ANKLE2
Reactivity:	Human, Mouse, Rat
Immunogen Type:	Conjugated Peptide
Immunogen:	Anti-ANKLE2 antibody was prepared from chicken egg fractions produced by repeated immunizations with a 19 amino acid synthetic peptide near the internal region of human ANKLE2.

Purity/Specificity: Anti-ANKLE2 Antibody is an IgY fraction that has been affinity purified by immunoaffinity purification. Three isoforms of ANKLE2 are known to exist; this antibody will detect all three. ANKLE2 antibody is predicted to not cross-react with ANKLE1.

Relevant Links:

- [UniProtKB - Q86XL3](#)
- [GeneID - 23141](#)
- [NCBI - AAH43157](#)

Application Details

Tested Applications: ELISA, WB

Application Note: Anti-ANKLE2 Antibody has been tested for use in ELISA and Western Blotting. Specific conditions for reactivity should be optimized by the end user. Expect a band at approximately 104 kDa in Western Blots of specific cell lysates and tissues.

Assay Dilutions: All assays should be optimized by the user. Recommended dilutions (if any) may be listed below.

ELISA: 1:10,000 - 1:20,000

WB: 1 - 2 µg/mL

Formulation

Physical State: Liquid (sterile filtered)

Concentration: 1 mg/mL by UV absorbance at 280 nm

Buffer: 0.01 M Sodium Phosphate, 0.25 M Sodium Chloride, pH 7.2

Preservative: 0.02% (w/v) Sodium Azide

Stabilizer: None

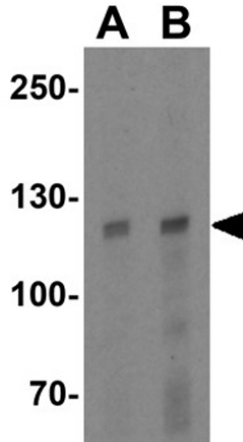
Shipping & Handling

Shipping Condition: Dry Ice

Storage Condition: Store vial at -20° C prior to opening. Aliquot contents and freeze at -20° C or below for extended storage. Avoid cycles of freezing and thawing. Centrifuge product if not completely clear after standing at room temperature. This product is stable for several weeks at 4° C as an undiluted liquid. Dilute only prior to immediate use.

Expiration: Expiration date is one (1) year from date of receipt.

Images



Western Blot

Western blot analysis of ANKLE2.

Load: human testis tissue lysate.

Primary Antibody: ANKLE2 antibody at (A) 1 $\mu\text{g}/\text{mL}$ and (B) 2 $\mu\text{g}/\text{mL}$.

Disclaimer

This product is for research use only and is not intended for therapeutic or diagnostic applications. Please contact a technical service representative for more information. All products of animal origin manufactured by Rockland Immunochemicals are derived from starting materials of North American origin. Collection was performed in United States Department of Agriculture (USDA) inspected facilities and all materials have been inspected and certified to be free of disease and suitable for exportation. All properties listed are typical characteristics and are not specifications. All suggestions and data are offered in good faith but without guarantee as conditions and methods of use of our products are beyond our control. All claims must be made within 30 days following the date of delivery. The prospective user must determine the suitability of our materials before adopting them on a commercial scale. Suggested uses of our products are not recommendations to use our products in violation of any patent or as a license under any patent of Rockland Immunochemicals, Inc. If you require a commercial license to use this material and do not have one, then return this material, unopened to: Rockland Inc., P.O. BOX 5199, Limerick, Pennsylvania, USA.