

**Datasheet for 200-901-Y06**

## Alpha-Tubulin Antibody

### Overview

<b>Description:</b>	Anti-Alpha-Tubulin (CHICKEN) Antibody - 200-901-Y06
<b>Item No.:</b>	200-901-Y06
<b>Size:</b>	100 µg
<b>Applications:</b>	ELISA, WB
<b>Reactivity:</b>	Human, Mouse, Rat
<b>Host Species:</b>	Chicken

### Product Details

<b>Background:</b>	Alpha-tubulin belongs to the tubulin superfamily, which is composed of six distinct families. Along with beta-tubulins, alpha-tubulins are the major components of microtubules. These microtubules are involved in a wide variety of cellular activities ranging from mitosis and transport events to cell movement and the maintenance of cell shape. Alpha- and beta-tubulin dimers are assembled to 13 protofilaments that form a microtubule of 22-nm diameter. Tyrosine ligase adds a C-terminal tyrosine to monomeric alpha-tubulin. Assembled microtubules can again be detyrosinated by a cytoskeleton-associated carboxypeptidase. Another post-translational modification of detyrosinated alpha-tubulin is C-terminal polyglutamylation, which is characteristic of microtubules in neuronal cells and the mitotic spindle. Like GAPDH and beta-Actin, this antibody makes an excellent loading control in immunoblots.
<b>Synonyms:</b>	Alpha-tubulin Antibody, TUBA2, bA408E5.3, TUBA2, TUBA3D, Alpha-tubulin 2
<b>Host Species:</b>	Chicken
<b>Clonality:</b>	Polyclonal
<b>Format:</b>	IgY

### Target Details

<b>Gene Name:</b>	TUBA3C
<b>Reactivity:</b>	Human, Mouse, Rat
<b>Immunogen Type:</b>	Conjugated Peptide

<b>Immunogen:</b>	Anti-Tubulin antibody was prepared from chicken egg fractions produced by repeated immunizations with a 16 amino acid synthetic peptide near the N-terminus of human Tubulin.
<b>Purity/Specificity:</b>	Anti-Alpha-tubulin Antibody is an IgY fraction that has been affinity purified by immunoaffinity purification. Cross reactivity with Alpha-tubulin from other sources has not been determined.
<b>Relevant Links:</b>	<ul style="list-style-type: none"><li>• <a href="#">UniProtKB - P0DPH7</a></li><li>• <a href="#">GeneID - 7278</a></li><li>• <a href="#">NCBI - NP_005992</a></li></ul>

## Application Details

<b>Tested Applications:</b>	ELISA, WB
<b>Application Note:</b>	Anti-Alpha-tubulin Antibody has been tested for use in ELISA and Western Blotting. Specific conditions for reactivity should be optimized by the end user. Expect a band at approximately 50 kDa in Western Blots of specific cell lysates and tissues.
<b>Assay Dilutions:</b>	All assays should be optimized by the user. Recommended dilutions (if any) may be listed below.
<b>ELISA:</b>	1:5000-1:10000
<b>WB:</b>	0.5 - 1 µg/mL

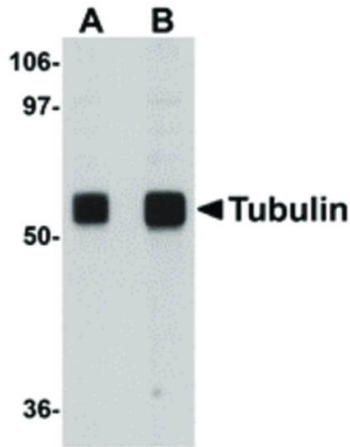
## Formulation

<b>Physical State:</b>	Liquid (sterile filtered)
<b>Concentration:</b>	1.0 mg/mL by UV absorbance at 280 nm
<b>Buffer:</b>	0.01 M Sodium Phosphate, 0.25 M Sodium Chloride, pH 7.2
<b>Preservative:</b>	0.02% (w/v) Sodium Azide
<b>Stabilizer:</b>	None

## Shipping & Handling

<b>Shipping Condition:</b>	Wet Ice
<b>Storage Condition:</b>	Antibody can be stored at 4°C up to one year. Antibodies should not be exposed to prolonged high temperatures.
<b>Expiration:</b>	Expiration date is one (1) year from date of receipt.

## Images



### Western Blot

Western Blot of Tubulin antibody. Lane 1: Rat brain tissue lysate with Tubulin antibody at 0.5  $\mu\text{g}/\text{mL}$ . Lane 2: Rat brain tissue lysate with Tubulin antibody at 1  $\mu\text{g}/\text{mL}$ . Load: 35  $\mu\text{g}$  per lane. Secondary antibody: Peroxidase anti-chicken secondary antibody at 1:10,000 for 45 min at RT. Block: 5% BLOTTO overnight at 4°C. Predicted/Observed size: 50 kDa, 52 kDa for Tubulin. Other band(s): Tubulin splice variants and isoforms.

## Disclaimer

This product is for research use only and is not intended for therapeutic or diagnostic applications. Please contact a technical service representative for more information. All products of animal origin manufactured by Rockland Immunochemicals are derived from starting materials of North American origin. Collection was performed in United States Department of Agriculture (USDA) inspected facilities and all materials have been inspected and certified to be free of disease and suitable for exportation. All properties listed are typical characteristics and are not specifications. All suggestions and data are offered in good faith but without guarantee as conditions and methods of use of our products are beyond our control. All claims must be made within 30 days following the date of delivery. The prospective user must determine the suitability of our materials before adopting them on a commercial scale. Suggested uses of our products are not recommendations to use our products in violation of any patent or as a license under any patent of Rockland Immunochemicals, Inc. If you require a commercial license to use this material and do not have one, then return this material, unopened to: Rockland Inc., P.O. BOX 5199, Limerick, Pennsylvania, USA.