

## Datasheet for 200-901-Y01

## Human Serum Albumin Antibody

### Overview

<b>Description:</b>	Anti-Albumin (CHICKEN) Antibody - 200-901-Y01
<b>Item No.:</b>	200-901-Y01
<b>Size:</b>	100 µg
<b>Applications:</b>	ELISA, IF, IHC, WB, Other
<b>Reactivity:</b>	Human, Mouse, Rat
<b>Host Species:</b>	Chicken

### Product Details

<b>Background:</b>	Albumin is a soluble, monomeric protein which comprises about one-half of the blood serum protein. It functions primarily as a carrier protein for steroids, fatty acids, and thyroid hormones and plays a role in stabilizing extracellular fluid volume. Albumin is synthesized in the liver as prealbumin which has an N-terminal peptide that is removed before the nascent protein is released from the rough endoplasmic reticulum. The resulting product, proalbumin, is in turn cleaved in the Golgi vesicles to produce the secreted albumin. At least two isoforms of Albumin are known to exist.
<b>Synonyms:</b>	Albumin Antibody, PRO0883, PRO0903, PRO1341, Serum albumin
<b>Host Species:</b>	Chicken
<b>Clonality:</b>	Polyclonal
<b>Format:</b>	IgY

### Target Details

<b>Gene Name:</b>	ALB
<b>Reactivity:</b>	Human, Mouse, Rat
<b>Immunogen Type:</b>	Conjugated Peptide
<b>Immunogen:</b>	Anti-Albumin antibody was prepared from chicken egg fractions produced by repeated immunizations with a 13 amino acid synthetic peptide near the internal region of human Albumin.

**Purity/Specificity:** Anti-Albumin Antibody is an IgY fraction that has been affinity purified by immunoaffinity purification. Cross reactivity with Albumin from other sources has not been determined.

**Relevant Links:**

- [UniProtKB - P02768](#)
- [GeneID - 213](#)
- [NCBI - NP\\_000468.1](#)

## Application Details

**Tested Applications:** ELISA, IF, IHC, WB

**Suggested Applications:** Other (Based on references)

**Application Note:** Anti-Albumin Antibody has been tested for use in ELISA, Western Blotting, Immunohistochemistry and Immunofluorescence. Specific conditions for reactivity should be optimized by the end user. Expect a band at approximately 69 kDa in Western Blots of specific cell lysates and tissues.

**Assay Dilutions:** All assays should be optimized by the user. Recommended dilutions (if any) may be listed below.

**ELISA:** 1:10,000-1:20,000

**IF:** 20 µg/mL

**IHC:** 2.5 µg/mL

**WB:** 1 - 2 µg/mL

## Formulation

**Physical State:** Liquid (sterile filtered)

**Concentration:** 1.0 mg/mL by UV absorbance at 280 nm

**Buffer:** 0.01 M Sodium Phosphate, 0.25 M Sodium Chloride, pH 7.2

**Preservative:** 0.02% (w/v) Sodium Azide

**Stabilizer:** None

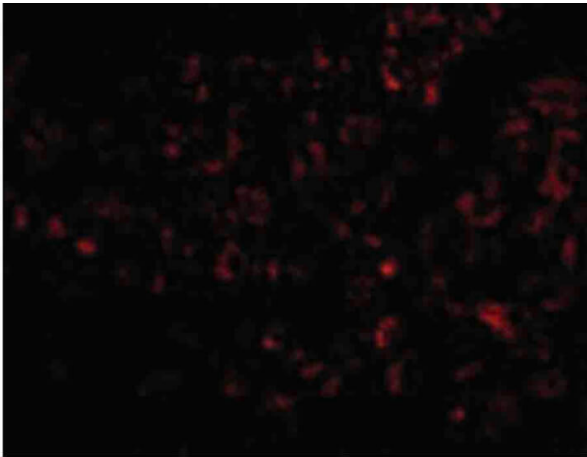
## Shipping & Handling

**Shipping Condition:** Wet Ice

**Storage Condition:** Antibody can be stored at 4°C up to one year. Antibodies should not be exposed to prolonged high temperatures.

**Expiration:** Expiration date is one (1) year from date of receipt.

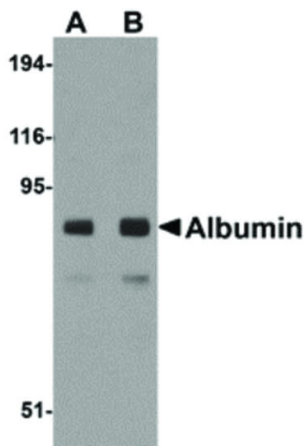
## Images



### Immunofluorescence Microscopy

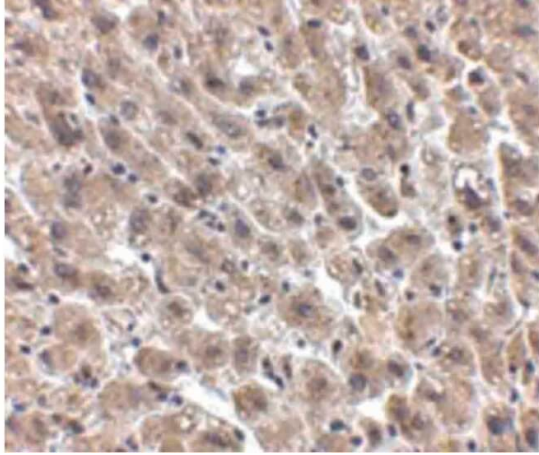
Immunofluorescence Microscopy of Albumin antibody.

Tissue: Human liver tissue. Fixation: 0.5% PFA. Antigen retrieval: not required. Primary antibody: Albumin antibody at 20 µg/mL for 1 h at RT. Secondary antibody: Fluorescein chicken secondary antibody at 1:10,000 for 45 min at RT. Localization: Albumin is secreted into extracellular regions. Staining: Albumin as red fluorescent signal.



### Western Blot

Western Blot of Albumin antibody. Lane 1: Mouse liver tissue lysate with Albumin antibody at 1 µg/mL. Lane 2: Mouse liver tissue lysate with Albumin antibody at 2 µg/mL. Load: 35 µg per lane. Secondary antibody: Peroxidase chicken secondary antibody at 1:10,000 for 45 min at RT. Block: 5% BLOTTO overnight at 4°C. Predicted/Observed size: 69 kDa, 80 kDa for Albumin. Other band(s): Albumin splice variants and isoforms.



#### **Immunohistochemistry**

Immunohistochemistry of Albumin antibody. Tissue: Human liver tissue Fixation: formalin fixed paraffin embedded. Antigen retrieval: not required. Primary antibody: Albumin antibody at 2.5 µg/mL for 1 h at RT. Secondary antibody: Peroxidase chicken secondary antibody at 1:10,000 for 45 min at RT. Localization: Albumin is secreted into extracellular regions. Staining: Albumin as precipitated brown signal with hematoxylin purple nuclear counterstain.

#### **References**

- Haas MJ et al. High-Throughput Analysis Identifying Drugs That Regulate Apolipoprotein A-I Synthesis. *Assay Drug Dev Technol.* (2017)

#### **Disclaimer**

This product is for research use only and is not intended for therapeutic or diagnostic applications. Please contact a technical service representative for more information. All products of animal origin manufactured by Rockland Immunochemicals are derived from starting materials of North American origin. Collection was performed in United States Department of Agriculture (USDA) inspected facilities and all materials have been inspected and certified to be free of disease and suitable for exportation. All properties listed are typical characteristics and are not specifications. All suggestions and data are offered in good faith but without guarantee as conditions and methods of use of our products are beyond our control. All claims must be made within 30 days following the date of delivery. The prospective user must determine the suitability of our materials before adopting them on a commercial scale. Suggested uses of our products are not recommendations to use our products in violation of any patent or as a license under any patent of Rockland Immunochemicals, Inc. If you require a commercial license to use this material and do not have one, then return this material, unopened to: Rockland Inc., P.O. BOX 5199, Limerick, Pennsylvania, USA.