

**Datasheet for 200-901-X29****TAU Antibody****Overview**

<b>Description:</b>	Anti-TAU (CHICKEN) Polyclonal Antibody - 200-901-X29
<b>Item No.:</b>	200-901-X29
<b>Size:</b>	100 µL
<b>Applications:</b>	IHC, WB
<b>Reactivity:</b>	Human, Rat
<b>Host Species:</b>	Chicken

**Product Details**

<b>Background:</b>	Tau is a key microtubule-associated protein that plays an important role in the formation of microtubules in axons. Six tau isoforms have been identified as products of a single gene produced by alternative mRNA splicing. Tau mutations have been implicated in many neurodegenerative disorders such as Alzheimer's disease (AD), Pick's disease and progressive supranuclear palsy. Tau Antibody is ideal for researchers interested in neuroscience research.
<b>Synonyms:</b>	Microtubule-associated protein tau, Neurofibrillary tangle protein, Pired helical filament-tau, PHF-tau
<b>Host Species:</b>	Chicken
<b>Clonality:</b>	Polyclonal
<b>Format:</b>	IgY

**Target Details**

<b>Gene Name:</b>	MAPT
<b>Reactivity:</b>	Human, Rat
<b>Immunogen Type:</b>	Recombinant Protein
<b>Immunogen:</b>	Anti-Tau Antibody was produced in chickens by repeated immunizations with a recombinant full length human tau expressed in and purified from E.Coli.
<b>Purity/Specificity:</b>	Anti-Tau Antibody was purified by total IgY fraction.
<b>Relevant Links:</b>	

- [UniProtKB - P10636](#)
- [GeneID - 4137](#)
- [NCBI - P10636](#)

---

## Application Details

<b>Tested Applications:</b>	IHC, WB
<b>Application Note:</b>	Anti-TAU Antibody is tested for Western Blot, immunocytochemistry, immunohistochemistry, and it is specific for the ~48, 65 & 75 kDa tau isoforms. Specific conditions for reactivity should be optimized by the end user.
<b>Assay Dilutions:</b>	All assays should be optimized by the user. Recommended dilutions (if any) may be listed below.
<b>ELISA:</b>	1:100,000
<b>IF:</b>	1:1,000
<b>IHC:</b>	1:1,000
<b>WB:</b>	1:10,000

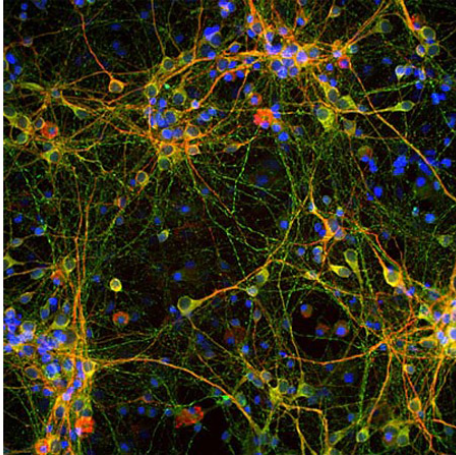
## Formulation

<b>Physical State:</b>	Liquid (sterile filtered)
<b>Buffer:</b>	0.02 M Potassium Phosphate, 0.15 M Sodium Chloride, pH 7.2
<b>Preservative:</b>	0.01% (w/v) Sodium Azide
<b>Stabilizer:</b>	None

## Shipping & Handling

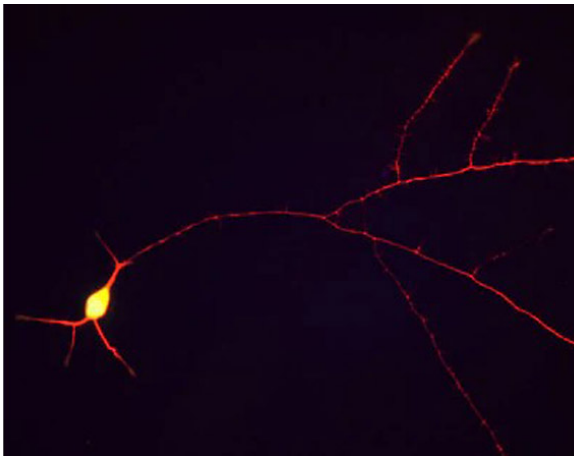
<b>Shipping Condition:</b>	Dry Ice
<b>Storage Condition:</b>	Store vial at -20° C prior to opening in undiluted aliquots. Aliquot contents and freeze at -20° C or below for extended storage. Avoid cycles of freezing and thawing. Centrifuge product if not completely clear after standing at room temperature.
<b>Expiration:</b>	Expiration date is one (1) year from date of receipt.

## Images



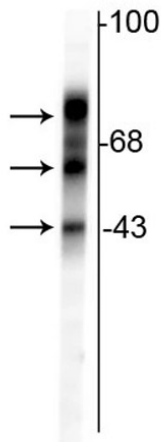
### Immunofluorescence Microscopy

Immunostaining of cultured E20 rat cortical neurons and glia stained with anti-TAU antibody (p/n 200-901-X29, green, 1:2000) and anti-MAP2 (red). The blue is DAPI staining nuclear DNA. Anti-TAU labels perikarya, dendrites, axons of neurons while anti-MAP2 only labels dendrites and perikarya of neurons. Where they overlap they appear orange-yellow.



### Immunofluorescence Microscopy

Immunostaining of cultured rat hippocampal neurons stained with anti-TAU antibody (p/n 200-901-X29, red, 1:1000) along the neuronal processes.



### Western Blot

Western Blot of Anti-TAU antibody.

Rat cortical lysate showing specific immunolabeling of the ~48 kDa, ~65 kDa & ~75 kDa tau isoforms.

## Disclaimer

This product is for research use only and is not intended for therapeutic or diagnostic applications. Please contact a technical service representative for more information. All products of animal origin manufactured by Rockland Immunochemicals are derived from starting materials of North American origin. Collection was performed in United States Department of Agriculture (USDA) inspected facilities and all materials have been inspected and certified to be free of disease and suitable for exportation. All properties listed are typical characteristics and are not specifications. All suggestions and data are offered in good faith but without guarantee as conditions and methods of use of our products are beyond our control. All claims must be made within 30 days following the date of delivery. The prospective user must determine the suitability of our materials before adopting them on a commercial scale. Suggested uses of our products are not recommendations to use our products in violation of any patent or as a license under any patent of Rockland Immunochemicals, Inc. If you require a commercial license to use this material and do not have one, then return this material, unopened to: Rockland Inc., P.O. BOX 5199, Limerick, Pennsylvania, USA.