

Datasheet for 200-901-MP6S**EEF1A1 Antibody****Overview**

Description:	Anti-EEF1A1 (CHICKEN) Antibody - 200-901-MP6S
Item No.:	200-901-MP6S
Size:	25 µL
Applications:	IHC, WB
Reactivity:	Human
Host Species:	Chicken

Product Details

Background:	EEF1A1 (Eukaryotic Translation Elongation Factor 1 Alpha 1) protein promotes the GTP-dependent binding of aminoacyl-tRNA to the A-site of ribosomes during protein biosynthesis. With PARP1 and TXK, forms a complex that acts as a T helper 1 (Th1) cell-specific transcription factor and binds the promoter of IFN-gamma to directly regulate its transcription, and is thus involved importantly in Th1 cytokine production. This isoform (alpha 1) is expressed in brain, placenta, lung, liver, kidney, and pancreas, and the other isoform (alpha 2) is expressed in brain, heart and skeletal muscle. This isoform is identified as an autoantigen in 66% of patients with Feltz syndrome. Anti-EEF1A1 is useful for researchers interested in Eukaryotic Translation Elongation Factor 1 Alpha-1-Like 14, Cervical Cancer, and the Innate Immune system.
Synonyms:	Chicken Anti-Eukaryotic Translation Elongation Factor 1 Alpha 1, Leukocyte Receptor Cluster (LRC) Member 7, Leukocyte Receptor Cluster Member 7, Eukaryotic Elongation Factor 1 A-1, Elongation Factor 1-Alpha 1, Elongation Factor Tu, EF-1-Alpha-1, EEF1A-1, EEF1A, LENG7, EF-Tu, EF1A, Eukaryotic Translation Elongation Factor 1 Alpha 1-Like 14, Glucocorticoid Receptor AF-1 Specific Elongation Factor, Translation Elongation Factor 1 Alpha 1-Like 14, Epididymis Secretory Sperm Binding Protein, Elongation Factor 1 Alpha Subunit, Prostate Tumor-Inducing Protein 1, Cervical Cancer Suppressor 3, CTCL Tumor Antigen, EF1a-Like Protein, HNGC:16303, GRAF-1EF, CCS-3, EE1A1, EEF-1, CCS3, PTI1
Host Species:	Chicken
Clonality:	Polyclonal
Format:	IgY

Target Details

Gene Name:	EEF1A1
Reactivity:	Human
Immunogen Type:	Conjugated Peptide
Immunogen:	Anti-EEF1A1 antibody was prepared from eggs of chickens laid after repeated immunizations with a synthetic peptide corresponding to a N-terminal portion of human EEF1A1 conjugated to Keyhole Limpet Hemocyanin (KLH).
Purity/Specificity:	This affinity purified antibody is directed against human EEF1A1. This product is an IgY fraction antibody purified from monospecific chicken egg yolks by a multi-step process which includes selective precipitation and salt fractionation followed by extensive dialysis against the buffer stated above. A BLAST analysis was used to suggest cross-reactivity with the antigen based on 100% homology with the immunizing sequence to EEF1A1 human, mouse, rat, bovine, rabbit, cat, horse, Chinese hamster, Gallus gallus, Pan troglodytes, and Pongo abelii. May have cross-reactivity to EEF1A to Danio rerio; and eef1as to Xenopus laevis.
Relevant Links:	<ul style="list-style-type: none">• UniProtKB - P68104• NCBI - NP_001393.1• GenelD - 1915

Application Details

Tested Applications:	IHC, WB
Application Note:	Anti-EEF1A1 Antibody has been tested in Western Blot and IHC. Expect a band at ~48-50 kDa in western blot using appropriate tissues and lysates. Positive control used: MCF-7 nuclear extract lysate in western blot and human kidney tissue in Immunohistochemistry.
Assay Dilutions:	All assays should be optimized by the user. Recommended dilutions (if any) may be listed below.
ELISA:	1:10,000 - 1:50,000
IHC:	1:100
WB:	5 µg/ml

Formulation

Physical State:	Liquid (sterile filtered)
Concentration:	0.95 mg/ml by UV absorbance at 280 nm
Buffer:	0.002 M Sodium Phosphate, 0.15 M Sodium Chloride, pH 7.0
Preservative:	0.01% (w/v) Sodium Azide

Stabilizer: None

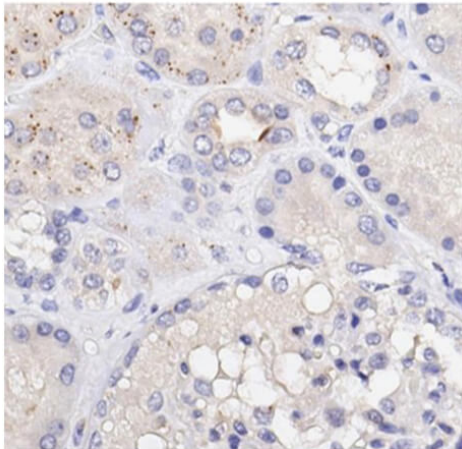
Shipping & Handling

Shipping Condition: Dry Ice

Storage Condition: Store vial at -20° C or below prior to opening. This vial contains a relatively low volume of reagent (25 µL). To minimize loss of volume dilute 1:10 by adding 225 µL of the buffer stated above directly to the vial. Recap, mix thoroughly and briefly centrifuge to collect the volume at the bottom of the vial. Use this intermediate dilution when calculating final dilutions as recommended below. Store the vial at -20°C or below after dilution. Avoid cycles of freezing and thawing.

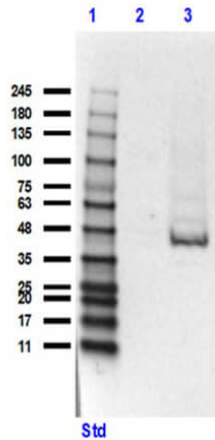
Expiration: Expiration date is one (1) year from date of receipt.

Images



Immunohistochemistry

Immunohistochemistry of Chicken Anti-EEF1A1 Antibody.
Tissue: Human Kidney (renal tubular epithelium sections).
Antigen Retrieval: HIER using Citrate buffer for 20mins.
Fixative: none. Primary Antibody: Anti-EEF1A1 at 1:100 for 30 mins at RT. Secondary Antibody: Alpha Anti-Chicken HRP at 1:500 for 20mins at RT. Counter Stain: Hematoxylin.
Predicted Localization: Intracellular, cytosol. Analysis Results: EEF1A1 shows weak cytoplasmic staining and more intense punctate staining. No membranous staining was observed.



Western Blot

Western Blot of Chicken Anti-EEF1A1 Antibody. Lane 1: Opal PreStained Molecular Weight Marker (p/n MB-210-0500). Lane 2: Human skeletal Muscle Lysate (35 μ g) [-]. Lane 3: MCF-7 Nuclear Extract Lysate (p/n W09-001-A85) (35 μ g) [+]. Primary Antibody: Anti-EEF1A1 at 5 μ g/mL overnight at 2-8°C. Secondary Antibody: Goat Anti-Chicken IgG HRP (p/n 603-103-002) at 1:5000 for 1hr at RT. Block: 5% BLOTTO (p/n B501-0500). Predicted MW: 47, 50kDa. Observed MW: ~46kDa. Exposure: 6sec.

Disclaimer

This product is for research use only and is not intended for therapeutic or diagnostic applications. Please contact a technical service representative for more information. All products of animal origin manufactured by Rockland Immunochemicals are derived from starting materials of North American origin. Collection was performed in United States Department of Agriculture (USDA) inspected facilities and all materials have been inspected and certified to be free of disease and suitable for exportation. All properties listed are typical characteristics and are not specifications. All suggestions and data are offered in good faith but without guarantee as conditions and methods of use of our products are beyond our control. All claims must be made within 30 days following the date of delivery. The prospective user must determine the suitability of our materials before adopting them on a commercial scale. Suggested uses of our products are not recommendations to use our products in violation of any patent or as a license under any patent of Rockland Immunochemicals, Inc. If you require a commercial license to use this material and do not have one, then return this material, unopened to: Rockland Inc., P.O. BOX 5199, Limerick, Pennsylvania, USA.