

**Datasheet for 200-901-MH7****PLK1 Antibody****Overview**

<b>Description:</b>	Anti-PLK1 (CHICKEN) Antibody - 200-901-MH7
<b>Item No.:</b>	200-901-MH7
<b>Size:</b>	100 µg
<b>Applications:</b>	IF, WB
<b>Reactivity:</b>	Human
<b>Host Species:</b>	Chicken

**Product Details**

<b>Background:</b>	Polo-like kinases (PLKs) are a family of four serine/threonine protein kinases that belongs to the CDC5/Polo subfamily and are critical regulators of cell cycle progression, mitosis, cytokinesis, elevated levels are found in many different types of cancer, and the DNA damage response. Depletion of this protein in cancer cells dramatically inhibited cell proliferation and induced apoptosis; hence, it is a target for cancer therapy. PLK-1, -2 and -3 are ubiquitously expressed, whereas PLK-4 is restricted to a few tissues. Diseases associated with PLK1 include Breast Cancer, Transient Tic Disorder, and Monoclonal Paraproteinemia. Anti-PLK1 Antibody is useful for researchers interested in Cancer Researcher, Cell Cycle Research, and Kinase Activity Research.
<b>Synonyms:</b>	Chicken Anti-Polo Like Kinase 1 Antibody, Chicken Anti-PLK1 Antibody, Chicken PLK-1 Antibody, Serine/Threonine-Protein Kinase 13, Polo-Like Kinase 1, STPK13, PLK-1, PLK, Serine/Threonine-Protein Kinase PLK1, Cell Cycle Regulated Protein Kinase, Polo-Like Kinase (Drosophila), Polo (Drosophila)-Like Kinase, EC 2.7.11.21
<b>Host Species:</b>	Chicken
<b>Clonality:</b>	Polyclonal
<b>Format:</b>	IgY

**Target Details**

<b>Gene Name:</b>	PLK1
<b>Reactivity:</b>	Human

<b>Immunogen Type:</b>	Conjugated Peptide
<b>Immunogen:</b>	Anti-PLK1 antibody was prepared from eggs of chickens laid after repeated immunizations with a synthetic peptide corresponding to an internal portion of human PLK1 conjugated to Keyhole Limpet Hemocyanin (KLH).
<b>Purity/Specificity:</b>	This product is an IgY fraction antibody purified from monospecific chicken egg yolks by a multi-step process which includes selective precipitation and salt fractionation followed by extensive dialysis against the buffer stated above. Reactivity occurs against human PLK1. A BLAST analysis was used to suggest cross reactivity with PLK1 protein from rat, mouse, and bovine sources based on 100% homology with the immunizing sequence.
<b>Relevant Links:</b>	<ul style="list-style-type: none"><li>• <a href="#">UniProtKB - P53350</a></li><li>• <a href="#">NCBI - NP_005021.2</a></li><li>• <a href="#">GenelD - 5347</a></li></ul>

## Application Details

<b>Tested Applications:</b>	IF, WB
<b>Application Note:</b>	Anti-PLK1 antibody has been tested in Western Blot and Immunofluorescence. Expect a band ~68.3kDa in appropriate cell lysates or tissues. Positive controls used are HEK293T or K-562 whole cell lysate in WB, and HeLa cells in IF. Specific conditions for reactivity should be optimized by the end user.
<b>Assay Dilutions:</b>	All assays should be optimized by the user. Recommended dilutions (if any) may be listed below.
<b>ELISA:</b>	1:10,000 - 1:50,000
<b>IF:</b>	5 µg/mL
<b>IHC:</b>	15 µg/ml
<b>WB:</b>	1:500

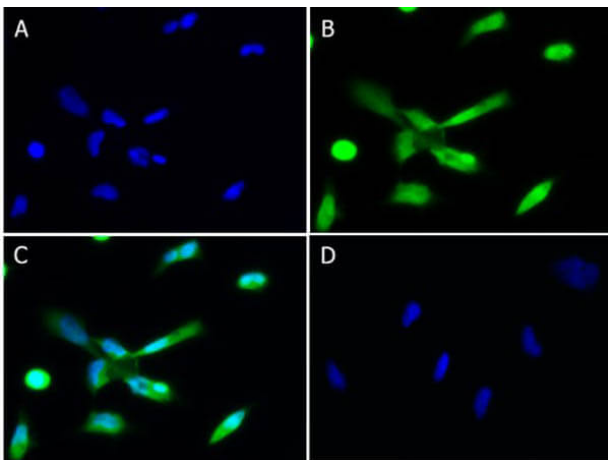
## Formulation

<b>Physical State:</b>	Liquid (sterile filtered)
<b>Concentration:</b>	1.05 mg/ml by UV absorbance at 280 nm
<b>Buffer:</b>	0.002 M Sodium Phosphate, 0.15 M Sodium Chloride, pH 7.0
<b>Preservative:</b>	0.01% (w/v) Sodium Azide
<b>Stabilizer:</b>	None

## Shipping & Handling

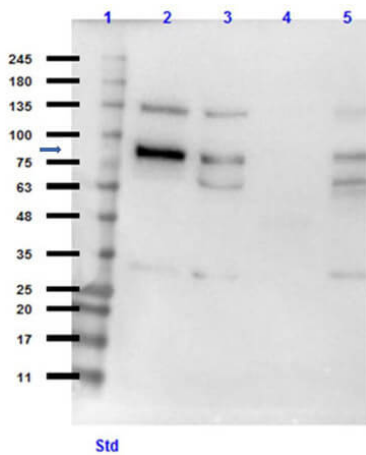
<b>Shipping Condition:</b>	Dry Ice
<b>Storage Condition:</b>	Store vial at -20° C prior to opening. Aliquot contents and freeze at -20° C or below for extended storage. Avoid cycles of freezing and thawing. Centrifuge product if not completely clear after standing at room temperature. This product is stable for several weeks at 4° C as an undiluted liquid. Dilute only prior to immediate use.
<b>Expiration:</b>	Expiration date is one (1) year from date of receipt.

## Images



### Immunofluorescence Microscopy

Immunofluorescence of Chicken Anti-PLK1 Antibody. Cell Line: HeLa. Fixative: 4% PFA. Permeabilization: 0.3% Triton X-100. Antibody: Chicken Anti-PLK1 at 5µg/mL overnight at 2-8°C. Counterstain Antibody: Donkey Anti-Chicken IgG DyLight™ 488 (p/n 603-141-126) at 5µg/mL for 1hr at RT. Nuclear counterstain: DAPI. Localization: Intercellular. Image: (A) DAPI Only, (B) PLK1+Secondary, (C) Merge A+B, (D) Secondary only.



### Western Blot

Western Blot of Chicken Anti-PLK1 Antibody. Lane 1: Opal PreStained Molecular Weight (p/n MB-201-0500). Lane 2: PLK1 Overexpressing Lysate (10µg). Lane 3: HEK293T Lysate (p/n W09-000-365). Lane 4: Human Testis Lysate. Lane 5: K-562 Lysate (p/n W09-001-GJ7). Load 35µg per lysate. Blocking Buffer: 5% Blotto (p/n B501-0500) in TBST. Primary Antibody: Anti-PLK1 at 1:500 overnight at 2-8°C. Secondary Antibody: Goat Anti-Chicken HRP Antibody (p/n 603-103-126) at 1:40000 for 60min at RT. Predicted MW: ~68kDa. Observed MW: ~135, ~80kDa arrow. In some lysates ~63kDa band is present.

## Disclaimer

This product is for research use only and is not intended for therapeutic or diagnostic applications. Please contact a technical service representative for more information. All products of animal origin manufactured by Rockland Immunochemicals are derived from starting materials of North American origin. Collection was performed in United States Department of Agriculture (USDA) inspected facilities and all materials have been inspected and certified to be free of disease and suitable for exportation. All properties listed are typical characteristics and are not specifications. All suggestions and data are offered in good faith but without guarantee as conditions and methods of use of our products are beyond our control. All claims must be made within 30 days following the date of delivery. The prospective user must determine the suitability of our materials before adopting them on a commercial scale. Suggested uses of our products are not recommendations to use our products in violation of any patent or as a license under any patent of Rockland Immunochemicals, Inc. If you require a commercial license to use this material and do not have one, then return this material, unopened to: Rockland Inc., P.O. BOX 5199, Limerick, Pennsylvania, USA.