

Datasheet for 200-901-EM1**SIRT6 Antibody****Overview**

| | |
|----------------------|---|
| Description: | Anti-SIRT6 (CHICKEN) Antibody - 200-901-EM1 |
| Item No.: | 200-901-EM1 |
| Size: | 100 µg |
| Applications: | ELISA, WB |
| Reactivity: | Human, Mouse, Rat |
| Host Species: | Chicken |

Product Details

| | |
|----------------------|---|
| Background: | The Silent Information Regulator (SIR2) family of genes are highly conserved from prokaryotes to eukaryotes and have important functions in the regulation of metabolism, growth and differentiation, inflammation, cellular survival, as well as in senescence and lifespan extension. Sirtuins, including SIRT1-7, are human homologs of yeast Sir2p. Sirtuins are NAD ⁺ -dependent histone/protein deacetylases (HDAC) which regulate cellular metabolism, e.g. energy metabolism, and thereby are associated with aging and several age-related diseases. SIRT6 is a histone H3 lysine 9 deacetylase and is thought to stabilize the DNA-dependent protein kinase at double-stranded DNA breaks and may have a role in the process of mammalian aging. |
| Synonyms: | SIRT6 Antibody, SIR2L6, SIR2L6, NAD-dependent protein deacetylase sirtuin-6, Regulatory protein SIR2 homolog 6 |
| Host Species: | Chicken |
| Clonality: | Polyclonal |
| Format: | IgY |

Target Details

| | |
|------------------------|---|
| Gene Name: | SIRT6 |
| Reactivity: | Human, Mouse, Rat |
| Immunogen Type: | Conjugated Peptide |
| Immunogen: | Anti-SIRT6 antibody was prepared from chicken egg fractions produced by repeated immunizations with a 17 amino acid synthetic peptide near the C-terminus of human SIRT6. |

Purity/Specificity: Anti-SIRT6 Antibody is an IgY fraction that has been affinity purified by immunoaffinity purification. Cross reactivity with SIRT6 from other sources has not been determined.

Relevant Links:

- [UniProtKB - Q8N6T7](#)
- [GeneID - 51548](#)
- [NCBI - EAW69254](#)

Application Details

Tested Applications: ELISA, WB

Application Note: Anti-SIRT6 Antibody has been tested for use in ELISA and Western Blotting. Specific conditions for reactivity should be optimized by the end user. Expect a band at approximately 39 kDa in Western Blots of specific cell lysates and tissues.

Assay Dilutions: All assays should be optimized by the user. Recommended dilutions (if any) may be listed below.

ELISA: 1:5,000-1:10,000

WB: 0.5-1 µg/mL

Formulation

Physical State: Liquid (sterile filtered)

Concentration: 1.0 mg/mL by UV absorbance at 280 nm

Buffer: 0.01 M Sodium Phosphate, 0.25 M Sodium Chloride, pH 7.2

Preservative: 0.02% (w/v) Sodium Azide

Stabilizer: None

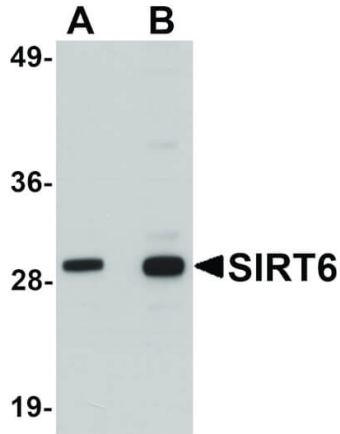
Shipping & Handling

Shipping Condition: Dry Ice

Storage Condition: Store vial at -20° C prior to opening. Aliquot contents and freeze at -20° C or below for extended storage. Avoid cycles of freezing and thawing. Centrifuge product if not completely clear after standing at room temperature. This product is stable for several weeks at 4° C as an undiluted liquid. Dilute only prior to immediate use.

Expiration: Expiration date is one (1) year from date of receipt.

Images



Western Blot

Western Blot of SIRT6 antibody. Lane 1: HeLa cell lysate with SIRT6 antibody at 0.5 $\mu\text{g}/\text{mL}$. Lane 2: HeLa cell lysate with SIRT6 antibody at 1 $\mu\text{g}/\text{mL}$. Secondary antibody: Peroxidase chicken secondary antibody at 1:10,000 for 45 min at RT. Block: 5% BLOTTO overnight at 4°C. Predicted/Observed size: 39 kDa, 30 kDa for SIRT6. Other band(s): SIRT6 splice variants and isoforms.

Disclaimer

This product is for research use only and is not intended for therapeutic or diagnostic applications. Please contact a technical service representative for more information. All products of animal origin manufactured by Rockland Immunochemicals are derived from starting materials of North American origin. Collection was performed in United States Department of Agriculture (USDA) inspected facilities and all materials have been inspected and certified to be free of disease and suitable for exportation. All properties listed are typical characteristics and are not specifications. All suggestions and data are offered in good faith but without guarantee as conditions and methods of use of our products are beyond our control. All claims must be made within 30 days following the date of delivery. The prospective user must determine the suitability of our materials before adopting them on a commercial scale. Suggested uses of our products are not recommendations to use our products in violation of any patent or as a license under any patent of Rockland Immunochemicals, Inc. If you require a commercial license to use this material and do not have one, then return this material, unopened to: Rockland Inc., P.O. BOX 5199, Limerick, Pennsylvania, USA.