

Datasheet for 200-901-E54**Vimentin Antibody****Overview**

Description:	Anti-Vimentin (Chicken) Antibody - 200-901-E54
Item No.:	200-901-E54
Size:	100 µL
Applications:	IF, Multiplex, WB
Reactivity:	Human, Mouse, Rat, Bovine
Host Species:	Chicken

Product Details

Background:	Vimentin antibody recognizes Vimentin which is the major protein subunit of the 10nm or intermediate filaments (IFs) found in many kinds of mesenchymal and epithelial cells as well as developing neuronal and astrocytic precursor cells in the CNS. Vimentin is thought to be critically involved in lymphocyte adhesion and transmigration. Copolymers are frequently formed between vimentin and other IFs, such as GFAP (in many kinds of astrocytes), desmin (in muscle cells) and neurofilament proteins (in developing neurons). Antibodies to vimentin are useful in studies of stem cells and generally to reveal the filamentous cytoskeleton. Recent studies suggest that vimentin affects prostate cancer cells motility and invasiveness. Vimentin antibody is ideal for investigators involved in Neuroscience, Cell Migration and Cancer Research.
Synonyms:	VIM
Host Species:	Chicken
Clonality:	Polyclonal
Format:	IgY

Target Details

Gene Name:	VIM
Reactivity:	Human, Mouse, Rat, Bovine
Immunogen Type:	Recombinant Protein
Immunogen:	Anti-Vimentin Monoclonal Antibody was produced in chicken by repeated immunizations with recombinant human vimentin extensively purified from E. coli.

Purity/Specificity: Anti-Vimentin antibody is directed against human Vimentin proteins. The antibody was purified from chicken eggs as an IgY fraction. Reactivity is expected from human, mouse and rat sources. Cross reactivity with Vimentin from other species has not been determined.

Relevant Links:

- [UniProtKB - P08670](#)
- [GeneID - 7431](#)
- [NCBI - AAH66956.1](#)

Application Details

Tested Applications: IF, Multiplex, WB

Application Note: Anti-Vimentin antibody is tested for use in Western Blotting and IF. Specific conditions for reactivity should be optimized by the end user. Expect a band of approximately 50 kDa in size corresponding to the vimentin proteins in Western blots in the appropriate cell lysate or extract.

Assay Dilutions: All assays should be optimized by the user. Recommended dilutions (if any) may be listed below.

ELISA: 1:10,000

IF: 1:500

WB: 1:1000

Formulation

Physical State: Liquid

Concentration: Titrated value sufficient to run approximately 10 mini blots.

Buffer: 0.02 M Potassium Phosphate, 0.15 M Sodium Chloride, pH 7.2

Preservative: 0.01% (w/v) Sodium Azide

Shipping & Handling

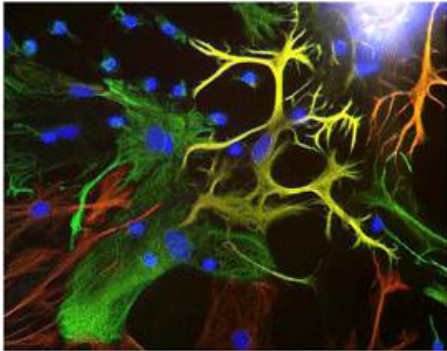
Shipping Condition: Dry Ice

Storage Condition: Store vial at -20° C prior to opening. This product is stable at 4° C as an undiluted liquid. For extended storage, aliquot contents and freeze at -20° C or below. Avoid cycles of freezing and thawing. Dilute only prior to immediate use.

Expiration: Expiration date is one (1) year from date of receipt.

Images

Anti-Vimentin



Immunostaining of cultured neurons and glia with anti-vimentin (green) and anti-GFAP (red) (cat.#620-GFAP). Astrocytes expressing both GFAP and vimentin appear yellow.

Immunofluorescence Microscopy

Immunofluorescence Microscopy of Chicken anti-Vimentin antibody. Tissue: Mixed neuron/glia cultures. Fixation: 0.5% PFA Antigen retrieval: not required. Primary antibody: Vimentin antibody at 1:500 for 1 h at RT. Secondary antibody: Fluorescein chicken secondary antibody at 1:10,000 for 45 min at RT. Localization: Vimentin is found in many kinds of mesenchymal and epithelial cells as well as developing neuronal and astrocytic precursor cells in the CNS. Staining: Vimentin Antibody as green fluorescent signal, GFAP Antibody as red, Vimentin and GFAP as yellow.

Disclaimer

This product is for research use only and is not intended for therapeutic or diagnostic applications. Please contact a technical service representative for more information. All products of animal origin manufactured by Rockland Immunochemicals are derived from starting materials of North American origin. Collection was performed in United States Department of Agriculture (USDA) inspected facilities and all materials have been inspected and certified to be free of disease and suitable for exportation. All properties listed are typical characteristics and are not specifications. All suggestions and data are offered in good faith but without guarantee as conditions and methods of use of our products are beyond our control. All claims must be made within 30 days following the date of delivery. The prospective user must determine the suitability of our materials before adopting them on a commercial scale. Suggested uses of our products are not recommendations to use our products in violation of any patent or as a license under any patent of Rockland Immunochemicals, Inc. If you require a commercial license to use this material and do not have one, then return this material, unopened to: Rockland Inc., P.O. BOX 5199, Limerick, Pennsylvania, USA.