

**Datasheet for 200-901-BA4****ENC-2 Antibody****Overview**

<b>Description:</b>	Anti-ENC-2 (CHICKEN) Antibody - 200-901-BA4
<b>Item No.:</b>	200-901-BA4
<b>Size:</b>	100 µg
<b>Applications:</b>	ELISA, IF, IHC, WB
<b>Reactivity:</b>	Human
<b>Host Species:</b>	Chicken

**Product Details**

<b>Background:</b>	The ectoderm-neural cortex-2 (ENC-2) protein a member of the BTB/PDZ Kelch protein family displaying significant homology to ENC-1, an actin-binding protein involved in neural fate specification during embryogenesis and adipocyte maturation. The exact function of ENC-2 has yet to be determined, but it has been suggested to be involved in the differentiation of neuronal precursor cells into neurons and astrocytes.
<b>Synonyms:</b>	ENC-2 Antibody, ENC2, ENC-2, ENC2, Kelch-like protein 25, Ectoderm-neural cortex protein 2
<b>Host Species:</b>	Chicken
<b>Clonality:</b>	Polyclonal
<b>Format:</b>	IgY

**Target Details**

<b>Gene Name:</b>	KLHL25
<b>Reactivity:</b>	Human
<b>Immunogen Type:</b>	Conjugated Peptide
<b>Immunogen:</b>	Anti-ENC-2 antibody was prepared from chicken egg fractions produced by repeated immunizations with a 14 amino acid synthetic peptide near the internal region of human ENC-2.
<b>Purity/Specificity:</b>	Anti-ENC-2 Antibody is an IgY fraction that has been affinity purified by immunoaffinity purification. Cross reactivity with ENC-2 from other sources has not been determined.
<b>Relevant Links:</b>	<ul style="list-style-type: none"><li>• <a href="#">UniProtKB - Q9H0H3</a></li></ul>

- [GeneID - 64410](#)
- [NCBI - AAV51405](#)

## Application Details

<b>Tested Applications:</b>	ELISA, IF, IHC, WB
<b>Application Note:</b>	Anti-ENC-2 Antibody has been tested for use in ELISA, Western Blotting, Immunocytochemistry and Immunofluorescence. Specific conditions for reactivity should be optimized by the end user. Expect a band at approximately 65 kDa in Western Blots of specific cell lysates and tissues.
<b>Assay Dilutions:</b>	All assays should be optimized by the user. Recommended dilutions (if any) may be listed below.
<b>ELISA:</b>	1:10,000
<b>IF:</b>	20 µg/mL
<b>WB:</b>	1 µg/mL

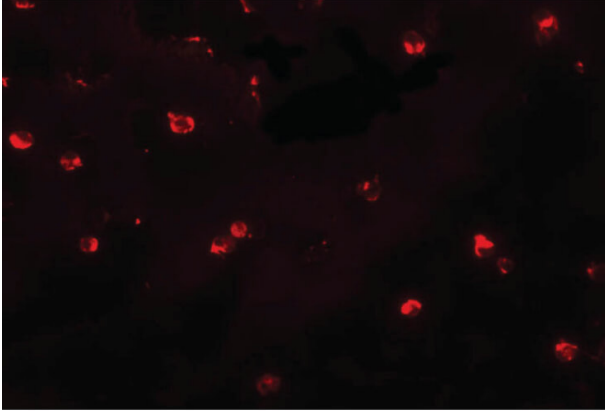
## Formulation

<b>Physical State:</b>	Liquid (sterile filtered)
<b>Concentration:</b>	1 mg/mL by UV absorbance at 280 nm
<b>Buffer:</b>	0.01 M Sodium Phosphate, 0.25 M Sodium Chloride, pH 7.2
<b>Preservative:</b>	0.02% (w/v) Sodium Azide
<b>Stabilizer:</b>	None

## Shipping & Handling

<b>Shipping Condition:</b>	Dry Ice
<b>Storage Condition:</b>	Store vial at -20° C prior to opening. Aliquot contents and freeze at -20° C or below for extended storage. Avoid cycles of freezing and thawing. Centrifuge product if not completely clear after standing at room temperature. This product is stable for several weeks at 4° C as an undiluted liquid. Dilute only prior to immediate use.
<b>Expiration:</b>	Expiration date is one (1) year from date of receipt.

## Images



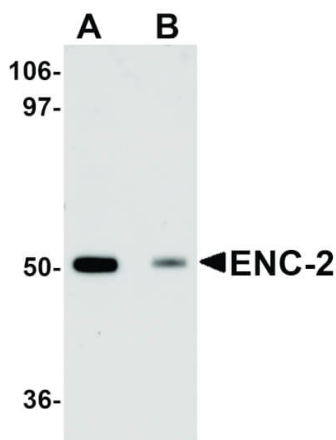
### Immunofluorescence Microscopy

Immunofluorescence Microscopy of ENC-2 antibody.  
Tissue: Jurkat cells. Fixation: 0.5% PFA. Antigen retrieval: not required. Primary antibody: ENC-2 antibody at 20  $\mu\text{g}/\text{mL}$  for 1 h at RT. Secondary antibody: Fluorescein chicken secondary antibody at 1:10,000 for 45 min at RT. Localization: ENC-2 is cytoplasmic. Staining: ENC-2 as red fluorescent signal.



### Immunohistochemistry

Immunocytochemistry of ENC-2 antibody. Tissue: Jurkat cells. Fixation: formalin fixed paraffin embedded. Antigen retrieval: not required. Primary antibody: ENC-2 antibody at 5  $\mu\text{g}/\text{mL}$  for 1 h at RT. Secondary antibody: Peroxidase chicken secondary antibody at 1:10,000 for 45 min at RT. Localization: ENC-2 is cytoplasmic. Staining: ENC-2 as precipitated pink signal with blue counterstain.



### Western Blot

Western Blot of ENC-2 antibody. Lane 1: Jurkat cell lysate with ENC-2 antibody at 1  $\mu\text{g}/\text{mL}$  in the absence of blocking peptide. Lane 2: Jurkat cell lysate with ENC-2 antibody at 1  $\mu\text{g}/\text{mL}$  in the presence of blocking peptide. Secondary antibody: Peroxidase chicken secondary antibody at 1:10,000 for 45 min at RT. Block: 5% BLOTTO overnight at 4°C. Predicted/Observed size: 65 kDa, 51 kDa for ENC-2. Other band(s): ENC-2 splice variants and isoforms.

### Disclaimer

This product is for research use only and is not intended for therapeutic or diagnostic applications. Please contact a technical service representative for more information. All products of animal origin manufactured by Rockland Immunochemicals are derived from starting materials of North American origin. Collection was performed in United States Department of Agriculture (USDA) inspected facilities and all materials have been inspected and certified to be free of disease and suitable for exportation. All properties listed are typical characteristics and are not specifications. All suggestions and data are offered in good faith but without guarantee as conditions and methods of use of our products are beyond our control. All claims must be made within 30 days following the date of delivery. The prospective user must determine the suitability of our materials before adopting them on a commercial scale. Suggested uses of our products are not recommendations to use our products in violation of any patent or as a license under any patent of Rockland Immunochemicals, Inc. If you require a commercial license to use this material and do not have one, then return this material, unopened to: Rockland Inc., P.O. BOX 5199, Limerick, Pennsylvania, USA.