

**Datasheet for 200-901-BA0****EMX1 Antibody****Overview**

<b>Description:</b>	Anti-EMX1 (CHICKEN) Antibody - 200-901-BA0
<b>Item No.:</b>	200-901-BA0
<b>Size:</b>	100 µg
<b>Applications:</b>	ELISA, WB
<b>Reactivity:</b>	Human, Mouse, Rat
<b>Host Species:</b>	Chicken

**Product Details**

<b>Background:</b>	EMX1 is a homeobox transcription factor involved in specifying cell fates in the developing central nervous system and it participates in the development of olfactory neurons. EMX1 is specifically expressed in the developing telencephalic cortex expression, where expression is restricted to pyramidal neurons. EMX1 is a reliable marker of pyramidal neurons and pyramidal cell lineage. EMX1 has been shown to be one of the downstream target genes for Gli-Kruppel family member 3 (Gli3) transcription factor, which is a part of the Sonic hedgehog-Patched-Gli signaling pathway important in endocrine signaling.
<b>Synonyms:</b>	EMX1 Antibody, Homeobox protein EMX1, Empty spiracles homolog 1
<b>Host Species:</b>	Chicken
<b>Clonality:</b>	Polyclonal
<b>Format:</b>	IgY

**Target Details**

<b>Gene Name:</b>	EMX1
<b>Reactivity:</b>	Human, Mouse, Rat
<b>Immunogen Type:</b>	Conjugated Peptide
<b>Immunogen:</b>	Anti-EMX1 antibody was prepared from chicken egg fractions produced by repeated immunizations with a 16 amino acid synthetic peptide near the N-terminus of human EMX1.

**Purity/Specificity:** Anti-EMX1 Antibody is an IgY fraction that has been affinity purified by immunoaffinity purification. At least two isoforms of EMX1 are known to exist; this antibody will detect the longer isoform. EMX1 antibody is predicted to not cross-react with other EMX family members.

**Relevant Links:**

- [UniProtKB - Q04741](#)
- [GeneID - 2016](#)
- [NCBI - NP\\_004088](#)

## Application Details

**Tested Applications:** ELISA, WB

**Application Note:** Anti-EMX1 Antibody has been tested for use in ELISA and Western Blotting. Specific conditions for reactivity should be optimized by the end user. Expect a band at approximately 28 kDa in Western Blots of specific cell lysates and tissues.

**Assay Dilutions:** All assays should be optimized by the user. Recommended dilutions (if any) may be listed below.

**ELISA:** 1:10,000

**WB:** 1 µg/mL

## Formulation

**Physical State:** Liquid (sterile filtered)

**Concentration:** 1.0 mg/mL by UV absorbance at 280 nm

**Buffer:** 0.01 M Sodium Phosphate, 0.25 M Sodium Chloride, pH 7.2

**Preservative:** 0.02% (w/v) Sodium Azide

**Stabilizer:** None

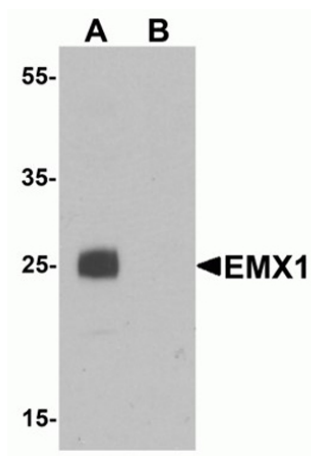
## Shipping & Handling

**Shipping Condition:** Dry Ice

**Storage Condition:** Store vial at -20° C prior to opening. Aliquot contents and freeze at -20° C or below for extended storage. Avoid cycles of freezing and thawing. Centrifuge product if not completely clear after standing at room temperature. This product is stable for several weeks at 4° C as an undiluted liquid. Dilute only prior to immediate use.

**Expiration:** Expiration date is one (1) year from date of receipt.

## Images



### Western Blot

Western blot analysis of EMX1.

Load: rat liver tissue lysate.

Primary Antibody: EMX1 antibody at 1  $\mu\text{g}/\text{mL}$  in (A) the absence and (B) the presence of blocking peptide.

## Disclaimer

This product is for research use only and is not intended for therapeutic or diagnostic applications. Please contact a technical service representative for more information. All products of animal origin manufactured by Rockland Immunochemicals are derived from starting materials of North American origin. Collection was performed in United States Department of Agriculture (USDA) inspected facilities and all materials have been inspected and certified to be free of disease and suitable for exportation. All properties listed are typical characteristics and are not specifications. All suggestions and data are offered in good faith but without guarantee as conditions and methods of use of our products are beyond our control. All claims must be made within 30 days following the date of delivery. The prospective user must determine the suitability of our materials before adopting them on a commercial scale. Suggested uses of our products are not recommendations to use our products in violation of any patent or as a license under any patent of Rockland Immunochemicals, Inc. If you require a commercial license to use this material and do not have one, then return this material, unopened to: Rockland Inc., P.O. BOX 5199, Limerick, Pennsylvania, USA.