

Datasheet for 200-901-AY7**ECRG1 Antibody****Overview**

Description:	Anti-ECRG1 (CHICKEN) Antibody - 200-901-AY7
Item No.:	200-901-AY7
Size:	100 µg
Applications:	ELISA, WB
Reactivity:	Human, Mouse, Rat
Host Species:	Chicken

Product Details

Background:	Epidermal type-II transmembrane serine protease (ECRG1), also known as TMPRSS11A, is a member of a novel esophageal cancer-related gene family. It is a type-II transmembrane serine protease which may play a role in cellular senescence. It is expressed in esophagus, liver, colon and lung. Overexpression of ECRG1 inhibits cell growth and induces G1 cell cycle arrest. It is down-regulated in esophagus cancers (EC) and might play important roles in the initiation and progression of EC.
Synonyms:	ECRG1 Antibody, ECRG1, ECRG1, HATL1, HESP, Transmembrane protease serine 11A, Airway trypsin-like protease 1
Host Species:	Chicken
Clonality:	Polyclonal
Format:	IgY

Target Details

Gene Name:	TMPRSS11A
Reactivity:	Human, Mouse, Rat
Immunogen Type:	Conjugated Peptide
Immunogen:	Anti-ECRG1 antibody was prepared from chicken egg fractions produced by repeated immunizations with a 16 amino acid synthetic peptide near the C-terminus of human ECRG1.

Purity/Specificity: Anti-ECRG1 Antibody is an IgY fraction that has been affinity purified by immunoaffinity purification. At least two isoforms of ECRG1 are known to exist; ECRG1 antibody is predicted to not cross-react with other ECRG family members.

Relevant Links:

- [UniProtKB - Q6ZMR5](#)
- [GeneID - 339967](#)
- [NCBI - NP_001107859.1](#)

Application Details

Tested Applications: ELISA, WB

Application Note: Anti-ECRG1 Antibody has been tested for use in ELISA and Western Blotting. Specific conditions for reactivity should be optimized by the end user. Expect a band at approximately 48 kDa in Western Blots of specific cell lysates and tissues.

Assay Dilutions: All assays should be optimized by the user. Recommended dilutions (if any) may be listed below.

ELISA: 1:10,000

WB: 1 µg/mL

Formulation

Physical State: Liquid (sterile filtered)

Concentration: 1 mg/mL by UV absorbance at 280 nm

Buffer: 0.01 M Sodium Phosphate, 0.25 M Sodium Chloride, pH 7.2

Preservative: 0.02% (w/v) Sodium Azide

Stabilizer: None

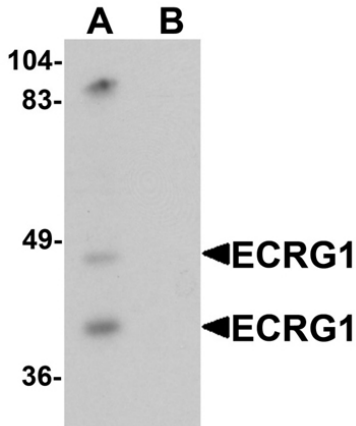
Shipping & Handling

Shipping Condition: Dry Ice

Storage Condition: Store vial at -20° C prior to opening. Aliquot contents and freeze at -20° C or below for extended storage. Avoid cycles of freezing and thawing. Centrifuge product if not completely clear after standing at room temperature. This product is stable for several weeks at 4° C as an undiluted liquid. Dilute only prior to immediate use.

Expiration: Expiration date is one (1) year from date of receipt.

Images



Western Blot

Western blot analysis of ECRG1.

Load: mouse liver tissue lysate.

Primary Antibody: ECRG1 antibody at 1 $\mu\text{g}/\text{mL}$ in (A) the absence and (B) the presence of blocking peptide.

Disclaimer

This product is for research use only and is not intended for therapeutic or diagnostic applications. Please contact a technical service representative for more information. All products of animal origin manufactured by Rockland Immunochemicals are derived from starting materials of North American origin. Collection was performed in United States Department of Agriculture (USDA) inspected facilities and all materials have been inspected and certified to be free of disease and suitable for exportation. All properties listed are typical characteristics and are not specifications. All suggestions and data are offered in good faith but without guarantee as conditions and methods of use of our products are beyond our control. All claims must be made within 30 days following the date of delivery. The prospective user must determine the suitability of our materials before adopting them on a commercial scale. Suggested uses of our products are not recommendations to use our products in violation of any patent or as a license under any patent of Rockland Immunochemicals, Inc. If you require a commercial license to use this material and do not have one, then return this material, unopened to: Rockland Inc., P.O. BOX 5199, Limerick, Pennsylvania, USA.