

Datasheet for 200-901-AY0**DRGX Antibody****Overview**

Description:	Anti-DRGX (CHICKEN) Antibody - 200-901-AY0
Item No.:	200-901-AY0
Size:	100 µg
Applications:	ELISA, IF, WB
Reactivity:	Human, Mouse, Rat
Host Species:	Chicken

Product Details

Background:	DRGX, also known as DRG11 or PRRXL1, is a paired homeodomain transcription factor, and was initially cloned from a differential hybridization screen aimed at identifying dorsal root ganglia (DRG)-specific genes. DRGX is a key regulator of the differentiation of the spinal cord neuronal circuit dedicated to the processing of nociceptive information. DRGX is also important for the formation of the whisker-related somatosensory maps in the principal sensory nucleus of the trigeminal nerve, thalamus and somatosensory cortex.
Synonyms:	DRGX Antibody, DRG11, PRRXL1, Dorsal root ganglia homeobox protein, Paired-related homeobox protein-like 1
Host Species:	Chicken
Clonality:	Polyclonal
Format:	IgY

Target Details

Gene Name:	DRGX
Reactivity:	Human, Mouse, Rat
Immunogen Type:	Conjugated Peptide
Immunogen:	Anti-DRGX antibody was prepared from chicken egg fractions produced by repeated immunizations with a 19 amino acid synthetic peptide near the C-terminus of human DRGX.

Purity/Specificity: Anti-DRGX Antibody is an IgY fraction that has been affinity purified by immunoaffinity purification. At least two are known to exist; DRGX antibody is predicted to not cross-react with other Homeodomain proteins.

Relevant Links:

- [UniProtKB - A6NNA5](#)
- [GeneID - 644168](#)
- [NCBI - NP_001073989](#)

Application Details

Tested Applications: ELISA, IF, WB

Application Note: Anti-DRGX Antibody has been tested for use in ELISA, Western Blotting and Immunofluorescence. Specific conditions for reactivity should be optimized by the end user. Expect a band at approximately 28 kDa in Western Blots of specific cell lysates and tissues.

Assay Dilutions: All assays should be optimized by the user. Recommended dilutions (if any) may be listed below.

ELISA: 1:10,000 - 1:20,000

IF: 20 µg/mL

WB: 1-2 µg/mL

Formulation

Physical State: Liquid (sterile filtered)

Concentration: 1 mg/mL by UV absorbance at 280 nm

Buffer: 0.01 M Sodium Phosphate, 0.25 M Sodium Chloride, pH 7.2

Preservative: 0.02% (w/v) Sodium Azide

Stabilizer: None

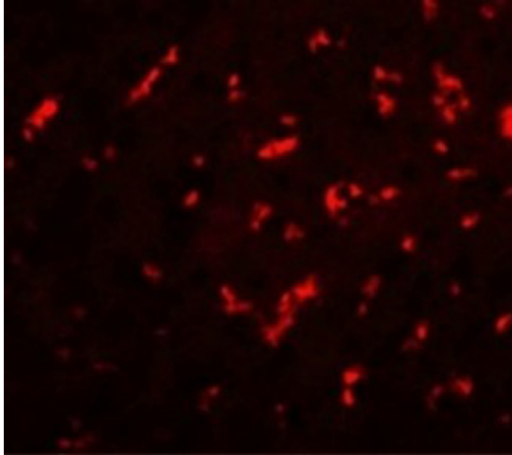
Shipping & Handling

Shipping Condition: Dry Ice

Storage Condition: Store vial at -20° C prior to opening. Aliquot contents and freeze at -20° C or below for extended storage. Avoid cycles of freezing and thawing. Centrifuge product if not completely clear after standing at room temperature. This product is stable for several weeks at 4° C as an undiluted liquid. Dilute only prior to immediate use.

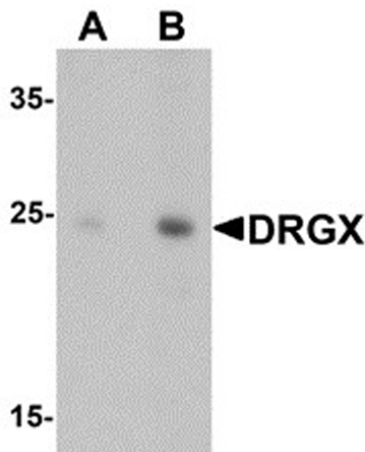
Expiration: Expiration date is one (1) year from date of receipt.

Images



Immunofluorescence Microscopy

Immunofluorescence of DRGX. Cell: rat liver cells. Primary Antibody: DRGX antibody at 20 µg/mL.



Western Blot

Western blot analysis of DRGX. Load: rat liver tissue lysate. Primary Antibody: DRGX antibody at (A) 1 µg/mL and (B) 2 µg/mL.

Disclaimer

This product is for research use only and is not intended for therapeutic or diagnostic applications. Please contact a technical service representative for more information. All products of animal origin manufactured by Rockland Immunochemicals are derived from starting materials of North American origin. Collection was performed in United States Department of Agriculture (USDA) inspected facilities and all materials have been inspected and certified to be free of disease and suitable for exportation. All properties listed are typical characteristics and are not specifications. All suggestions and data are offered in good faith but without guarantee as conditions and methods of use of our products are beyond our control. All claims must be made within 30 days following the date of delivery. The prospective user must determine the suitability of our materials before adopting them on a commercial scale. Suggested uses of our products are not recommendations to use our products in violation of any patent or as a license under any patent of Rockland Immunochemicals, Inc. If you require a commercial license to use this material and do not have one, then return this material, unopened to: Rockland Inc., P.O. BOX 5199, Limerick, Pennsylvania, USA.