

Datasheet for 200-901-AM8**C-raf Antibody****Overview**

Description:	Anti-c-RAF (CHICKEN) Antibody - 200-901-AM8
Item No.:	200-901-AM8
Size:	100 µg
Applications:	ELISA, WB
Reactivity:	Human, Mouse, Rat
Host Species:	Chicken

Product Details

Background:	C-raf is the cellular homolog of viral raf gene (v-raf) and encodes a MAP kinase kinase kinase (MAP3K), which functions downstream of the Ras family of membrane associated GTPases. Once activated, C-raf phosphorylates and activates the protein kinases MEK1 and MEK2, which in turn phosphorylate and activate the serine/threonine specific protein kinases, ERK1 and ERK2. These activated ERKs are pleiotropic effectors of cell physiology and play an important role in the control of gene expression involved in the cell division cycle, apoptosis, cell differentiation and cell migration. Mutations in this gene are associated with Noonan syndrome 5 and LEOPARD syndrome 2.
Synonyms:	C-raf Antibody, NS5, CRAF, Raf-1, c-Raf, RAF, Proto-oncogene c-RAF, cRaf
Host Species:	Chicken
Clonality:	Polyclonal
Format:	IgY

Target Details

Gene Name:	RAF1
Reactivity:	Human, Mouse, Rat
Immunogen Type:	Conjugated Peptide
Immunogen:	Anti-C-raf antibody was prepared from chicken egg fractions produced by repeated immunizations with an 19 amino acid synthetic peptide near the N-terminus of human C-raf.

Purity/Specificity: Anti-C-raf Antibody is an IgY fraction that has been affinity purified by immunoaffinity purification. Cross reactivity with C-raf from other sources has not been determined.

Relevant Links:

- [UniProtKB - P04049](#)
- [GeneID - 5894](#)
- [NCBI - NP_002871](#)

Application Details

Tested Applications: ELISA, WB

Application Note: Anti-C-raf Antibody has been tested for use in ELISA and Western Blotting. Specific conditions for reactivity should be optimized by the end user. Expect a band at approximately 73 kDa in Western Blots of specific cell lysates and tissues.

Assay Dilutions: All assays should be optimized by the user. Recommended dilutions (if any) may be listed below.

ELISA: 1:10,000 - 1:20,000

WB: 1-2 µg/mL

Formulation

Physical State: Liquid (sterile filtered)

Concentration: 1 mg/mL by UV absorbance at 280 nm

Buffer: 0.01 M Sodium Phosphate, 0.25 M Sodium Chloride, pH 7.2

Preservative: 0.02% (w/v) Sodium Azide

Stabilizer: None

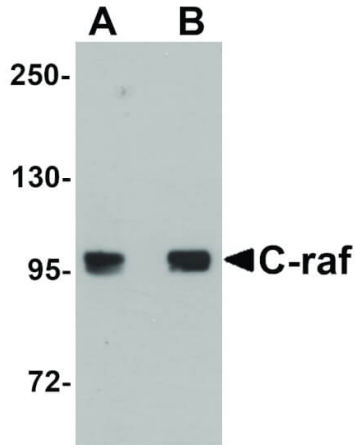
Shipping & Handling

Shipping Condition: Dry Ice

Storage Condition: Store vial at -20° C prior to opening. Aliquot contents and freeze at -20° C or below for extended storage. Avoid cycles of freezing and thawing. Centrifuge product if not completely clear after standing at room temperature. This product is stable for several weeks at 4° C as an undiluted liquid. Dilute only prior to immediate use.

Expiration: Expiration date is one (1) year from date of receipt.

Images



Western Blot

Western Blot of C-raf antibody. Lane 1: 3T3 cell lysate with C-raf antibody at 0.5 $\mu\text{g}/\text{mL}$. Lane 2: 3T3 cell lysate with C-raf antibody at 1 $\mu\text{g}/\text{mL}$. Secondary antibody: Peroxidase chicken secondary antibody at 1:10,000 for 45 min at RT. Block: 5% BLOTTO overnight at 4°C. Predicted/Observed size: 73 kDa, 95 kDa for C-raf. Other band(s): C-raf splice variants and isoforms.

Disclaimer

This product is for research use only and is not intended for therapeutic or diagnostic applications. Please contact a technical service representative for more information. All products of animal origin manufactured by Rockland Immunochemicals are derived from starting materials of North American origin. Collection was performed in United States Department of Agriculture (USDA) inspected facilities and all materials have been inspected and certified to be free of disease and suitable for exportation. All properties listed are typical characteristics and are not specifications. All suggestions and data are offered in good faith but without guarantee as conditions and methods of use of our products are beyond our control. All claims must be made within 30 days following the date of delivery. The prospective user must determine the suitability of our materials before adopting them on a commercial scale. Suggested uses of our products are not recommendations to use our products in violation of any patent or as a license under any patent of Rockland Immunochemicals, Inc. If you require a commercial license to use this material and do not have one, then return this material, unopened to: Rockland Inc., P.O. BOX 5199, Limerick, Pennsylvania, USA.