

Datasheet for 200-901-AF7 CCDC69 Antibody

Overview

Description:	Anti-CCDC69 (CHICKEN) Antibody - 200-901-AF7
Item No.:	200-901-AF7
Size:	100 µg
Applications:	ELISA, IF, IHC, WB
Reactivity:	Human, Mouse, Rat
Host Species:	Chicken

Product Details

Background:	The coiled-coil domain is a common protein motif that is often involved in protein oligomerization and is found in proteins such as transcription factors and intermediate filaments. The CCDC47 gene maps to chromosome 5 at 5q33.1. Little is known about this protein.
Synonyms:	CCDC69 Antibody, Coiled-coil domain-containing protein 69
Host Species:	Chicken
Clonality:	Polyclonal
Format:	IgY

Target Details

Gene Name:	CCDC69
Reactivity:	Human, Mouse, Rat
Immunogen Type:	Conjugated Peptide
Immunogen:	Anti-CCDC69 antibody was prepared from chicken egg fractions produced by repeated immunizations with a 16 amino acid synthetic peptide near the N-terminus of human CCDC69.
Purity/Specificity:	Anti-CCDC69 Antibody is an IgY fraction that has been affinity purified by immunoaffinity purification. Cross reactivity with CCDC69 from other sources has not been determined.
Relevant Links:	<ul style="list-style-type: none">UniProtKB - A6NI79

- [GeneID - 26112](#)
- [NCBI - NP_056436](#)

Application Details

Tested Applications:	ELISA, IF, IHC, WB
Application Note:	Anti-CCDC69 Antibody has been tested for use in ELISA, Western Blotting, Immunohistochemistry and Immunofluorescence. Specific conditions for reactivity should be optimized by the end user. Expect a band at approximately 35 kDa in Western Blots of specific cell lysates and tissues.
Assay Dilutions:	All assays should be optimized by the user. Recommended dilutions (if any) may be listed below.
ELISA:	1:10,000
IF:	20 µg/mL
IHC:	5 µg/mL
WB:	1 µg/mL

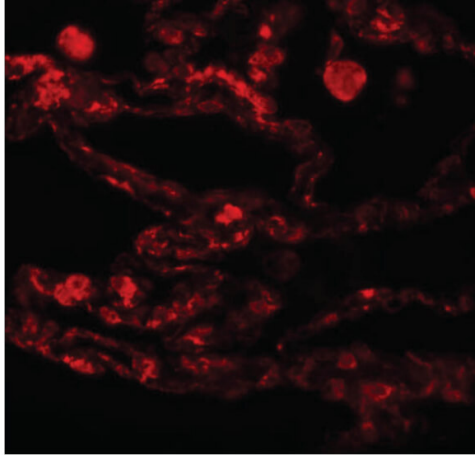
Formulation

Physical State:	Liquid (sterile filtered)
Concentration:	1 mg/mL by UV absorbance at 280 nm
Buffer:	0.01 M Sodium Phosphate, 0.25 M Sodium Chloride, pH 7.2
Preservative:	0.02% (w/v) Sodium Azide
Stabilizer:	None

Shipping & Handling

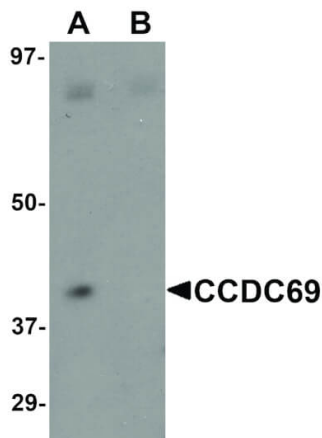
Shipping Condition:	Dry Ice
Storage Condition:	Store vial at -20° C prior to opening. Aliquot contents and freeze at -20° C or below for extended storage. Avoid cycles of freezing and thawing. Centrifuge product if not completely clear after standing at room temperature. This product is stable for several weeks at 4° C as an undiluted liquid. Dilute only prior to immediate use.
Expiration:	Expiration date is one (1) year from date of receipt.

Images



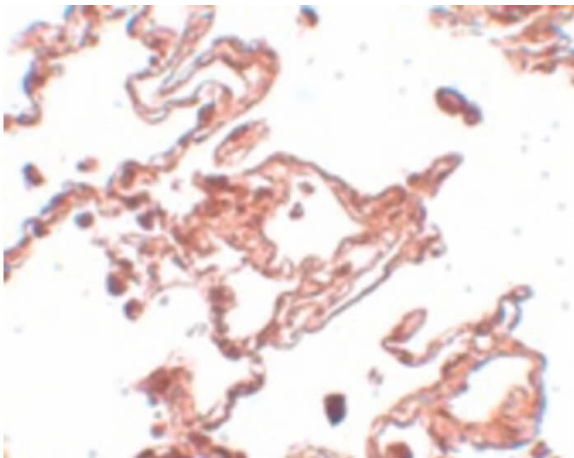
Immunofluorescence Microscopy

Immunofluorescence Microscopy of CCDC69 antibody.
Tissue: Human lung tissue. Fixation: 0.5% PFA. Antigen retrieval: not required. Primary antibody: CCDC69 antibody at 20 $\mu\text{g}/\text{mL}$ for 1 h at RT. Secondary antibody: Fluorescein chicken secondary antibody at 1:10,000 for 45 min at RT. Staining: CCDC69 as red fluorescent signal.



Western Blot

Western Blot of CCDC69 antibody. Lane 1: Mouse lung tissue lysate with CCDC69 antibody at 1 $\mu\text{g}/\text{mL}$ in the absence of blocking peptide. Lane 2: Mouse lung tissue lysate with CCDC69 antibody at 1 $\mu\text{g}/\text{mL}$ in the presence of blocking peptide. Secondary antibody: Peroxidase chicken secondary antibody at 1:10,000 for 45 min at RT. Block: 5% BLOTTO overnight at 4°C. Predicted/Observed size: 35 kDa, 39 kDa for CCDC69. Other band(s): CCDC69 splice variants and isoforms.



Immunohistochemistry

Immunohistochemistry of CCDC69 antibody. Tissue: Human lung tissue. Fixation: formalin fixed paraffin embedded. Antigen retrieval: not required. Primary antibody: CCDC69 antibody at 5 $\mu\text{g}/\text{mL}$ for 1 h at RT. Secondary antibody: Peroxidase chicken secondary antibody at 1:10,000 for 45 min at RT. Staining: CCDC69 as precipitated pink signal with blue counterstain.

Disclaimer

This product is for research use only and is not intended for therapeutic or diagnostic applications. Please contact a technical service representative for more information. All products of animal origin manufactured by Rockland Immunochemicals are derived from starting materials of North American origin. Collection was performed in United States Department of Agriculture (USDA) inspected facilities and all materials have been inspected and certified to be free of disease and suitable for exportation. All properties listed are typical characteristics and are not specifications. All suggestions and data are offered in good faith but without guarantee as conditions and methods of use of our products are beyond our control. All claims must be made within 30 days following the date of delivery. The prospective user must determine the suitability of our materials before adopting them on a commercial scale. Suggested uses of our products are not recommendations to use our products in violation of any patent or as a license under any patent of Rockland Immunochemicals, Inc. If you require a commercial license to use this material and do not have one, then return this material, unopened to: Rockland Inc., P.O. BOX 5199, Limerick, Pennsylvania, USA.