

Datasheet for 200-901-AF6

CCDC55 Antibody

Overview

Description:	Anti-CCDC55 (CHICKEN) Antibody - 200-901-AF6
Item No.:	200-901-AF6
Size:	100 µg
Applications:	ELISA, IF, WB
Reactivity:	Human, Mouse, Rat
Host Species:	Chicken

Product Details

Background:	CCDC55, also known as Nuclear speckle-related protein 70 (NSrp70), was initially identified by the NIH Mammalian Gene Collection. Nuclear speckles are known to be the storage sites of mRNA splicing regulators. CCDC55 has been suggested to modulate alternative pre-mRNA splicing in vivo. It co-localizes and physically interacts with the SR proteins SC35 and ASF/SF2, essential splicing factors which are required for constitutive splicing and can regulate alternative mRNA splicing. Loss of CCDC55 in mice leads to early embryonic lethality highlights the importance of the functional role of CCDC55.
Synonyms:	CCDC55 Antibody, CCDC55, NSrp70, HSPC095, CCDC55, NSRP70, Nuclear speckle splicing regulatory protein 1, Coiled-coil domain-containing protein 55
Host Species:	Chicken
Clonality:	Polyclonal
Format:	IgY

Target Details

Gene Name:	NSRP1
Reactivity:	Human, Mouse, Rat
Immunogen Type:	Conjugated Peptide
Immunogen:	Anti-CCDC55 antibody was prepared from chicken egg fractions produced by repeated immunizations with a 16 amino acid synthetic peptide near the C-terminus of human CCDC55.

Purity/Specificity: Anti-CCDC55 Antibody is an IgY fraction that has been affinity purified by immunoaffinity purification. At least three isoforms are known to exist; this antibody will detect all three.

Relevant Links:

- [UniProtKB - Q9H0G5](#)
- [GeneID - 84081](#)
- [NCBI - NP_115517](#)

Application Details

Tested Applications: ELISA, IF, WB

Application Note: Anti-CCDC55 Antibody has been tested for use in ELISA, Western Blotting and Immunofluorescence. Specific conditions for reactivity should be optimized by the end user. Expect a band at approximately 66 kDa in Western Blots of specific cell lysates and tissues.

Assay Dilutions: All assays should be optimized by the user. Recommended dilutions (if any) may be listed below.

ELISA: 1:5000 - 1:10000

IF: 20 µg/mL

WB: 0.5-1 µg/mL

Formulation

Physical State: Liquid (sterile filtered)

Concentration: 1 mg/mL by UV absorbance at 280 nm

Buffer: 0.01 M Sodium Phosphate, 0.25 M Sodium Chloride, pH 7.2

Preservative: 0.02% (w/v) Sodium Azide

Stabilizer: None

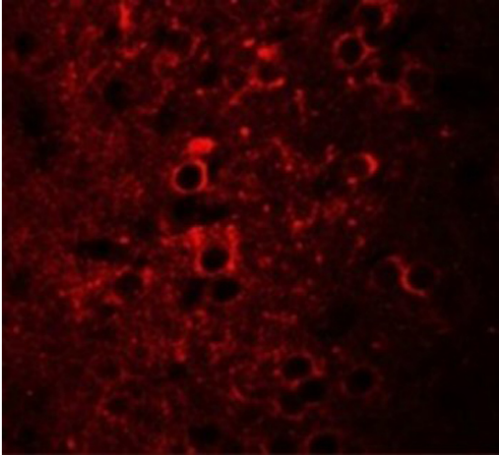
Shipping & Handling

Shipping Condition: Dry Ice

Storage Condition: Store vial at -20° C prior to opening. Aliquot contents and freeze at -20° C or below for extended storage. Avoid cycles of freezing and thawing. Centrifuge product if not completely clear after standing at room temperature. This product is stable for several weeks at 4° C as an undiluted liquid. Dilute only prior to immediate use.

Expiration: Expiration date is one (1) year from date of receipt.

Images

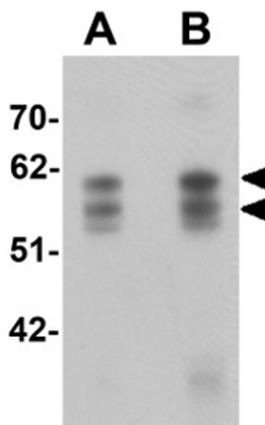


Immunofluorescence Microscopy

Immunofluorescence of CCDC55.

Cell: mouse brain cells.

Primary Antibody: CCDC55 antibody at 20 µg/mL.



Western Blot

Western blot analysis of CCDC55. Load: human brain tissue lysate. Primary Antibody: CCDC55 antibody at (A) 0.5 µg/mL and (B) 1 µg/mL.

Disclaimer

This product is for research use only and is not intended for therapeutic or diagnostic applications. Please contact a technical service representative for more information. All products of animal origin manufactured by Rockland Immunochemicals are derived from starting materials of North American origin. Collection was performed in United States Department of Agriculture (USDA) inspected facilities and all materials have been inspected and certified to be free of disease and suitable for exportation. All properties listed are typical characteristics and are not specifications. All suggestions and data are offered in good faith but without guarantee as conditions and methods of use of our products are beyond our control. All claims must be made within 30 days following the date of delivery. The prospective user must determine the suitability of our materials before adopting them on a commercial scale. Suggested uses of our products are not recommendations to use our products in violation of any patent or as a license under any patent of Rockland Immunochemicals, Inc. If you require a commercial license to use this material and do not have one, then return this material, unopened to: Rockland Inc., P.O. BOX 5199, Limerick, Pennsylvania, USA.