

Datasheet for 200-6337-0100

Glucose Oxidase Antibody Peroxidase Conjugated

Overview

Description:	Anti-Glucose Oxidase (SHEEP) Antibody Peroxidase Conjugated - 200-6337-0100
Item No.:	200-6337-0100
Size:	100 µg
Applications:	Dot Blot
Reactivity:	Aspergillus niger
Host Species:	Sheep

Product Details

Background:	Glucose oxidase is an enzyme that drives the oxidation of glucose into hydrogen peroxide and D-glucono- δ -lactone. This activity is utilized in biotechnology through colorimetric detection assays that are sensitive to the amount of hydrogen peroxide produced. Horseradish Peroxidase (HRP) is an enzyme that utilizes organic peroxide compounds as electron donors. Horseradish Peroxidase naturally provides protection for plants against pathogens, but can be utilized in molecular biology to convert various substrates to detectable compounds (such as in Western Blotting and ELISAs). Anti-Glucose Oxidase (Sheep) antibody is ideal for investigators in Microbiology, Immunology, and Cell Biology research.
Synonyms:	sheep anti-Glucose Oxidase HRP conjugated Antibody, peroxidase conjugated sheep anti-Glucose Oxidase Antibody, Beta D Glucose Oxygen 1 Oxido Reductase antibody, Glucose oxidase (Precursor) antibody, Glucose Oxyhydrase antibody, GOD antibody
Host Species:	Sheep
Conjugate:	Peroxidase (HRP)
Clonality:	Polyclonal
Format:	IgG

Target Details

Gene Name:	gox
Reactivity:	Aspergillus niger
Immunogen Type:	Native Protein

Immunogen:	Glucose Oxidase [Aspergillus niger]
Purity/Specificity:	Anti-Glucose Oxidase (Sheep) antibody is an IgG fraction antibody purified from monospecific antiserum by a multi-step process which includes delipidation, salt fractionation and ion exchange chromatography followed by extensive dialysis against the buffer stated above. Assay by immunoelectrophoresis resulted in a single precipitin arc against anti-Peroxidase, anti-Sheep Serum as well as purified and partially purified Glucose Oxidase [Aspergillus niger]. Cross reactivity against Glucose Oxidase from other tissues and species may occur but have not been specifically determined.
Relevant Links:	<ul style="list-style-type: none">• UniProtKB - P13006• NCBI - P13006.1

Application Details

Tested Applications:	Dot Blot
Application Note:	Anti-Glucose Oxidase peroxidase conjugated antibody has been tested by dot blot and is suitable to be assayed against 1.0 ug of Glucose Oxidase [Aspergillus niger] in a standard capture ELISA using ABTS (2,2'-azino-bis-[3-ethylbenzothiazoline-6-sulfonic acid]) as a substrate for 30 minutes at room temperature. A working dilution of 1:1,000 to 1:3,000 of the reconstitution concentration is suggested for this product.
Assay Dilutions:	All assays should be optimized by the user. Recommended dilutions (if any) may be listed below.
ELISA:	User Optimized
WB:	User Optimized

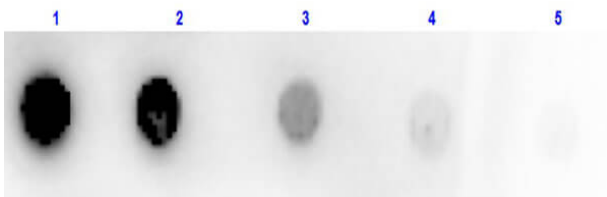
Formulation

Physical State:	Lyophilized
Concentration:	1.0 mg/mL by UV absorbance at 280 nm
Buffer:	0.02 M Potassium Phosphate, 0.15 M Sodium Chloride, pH 7.2
Preservative:	0.01% (w/v) Gentamicin Sulfate. Do NOT add Sodium Azide!
Stabilizer:	10 mg/mL Bovine Serum Albumin (BSA) - Immunoglobulin and Protease free
Reconstitution Volume:	100 µL
Reconstitution Buffer:	Restore with deionized water (or equivalent)

Shipping & Handling

Shipping Condition:	Ambient
Storage Condition:	Store vial at 4° C prior to restoration. For extended storage aliquot contents and freeze at -20° C or below. Avoid cycles of freezing and thawing. Centrifuge product if not completely clear after standing at room temperature. This product is stable for several weeks at 4° C as an undiluted liquid. Dilute only prior to immediate use.
Expiration:	Expiration date is one (1) year from date of receipt.

Images



Dot Blot

Dot Blot of Sheep Anti-GLUCOSE OXIDASE Antibody Peroxidase Conjugated. Lane 1: 100 ng Glucose Oxidase. Lanes 2-5: serial dilution 3 fold of Antigen. Primary Antibody: none. Secondary Antibody: Anti-Glucose Oxidase Peroxidase Conj'd (p/n 200-6337-0100) at 1:100 dilution of 1 mg/mL at RT for 30 minutes. Block: MB-070 at RT for 30 minutes.

Disclaimer

This product is for research use only and is not intended for therapeutic or diagnostic applications. Please contact a technical service representative for more information. All products of animal origin manufactured by Rockland Immunochemicals are derived from starting materials of North American origin. Collection was performed in United States Department of Agriculture (USDA) inspected facilities and all materials have been inspected and certified to be free of disease and suitable for exportation. All properties listed are typical characteristics and are not specifications. All suggestions and data are offered in good faith but without guarantee as conditions and methods of use of our products are beyond our control. All claims must be made within 30 days following the date of delivery. The prospective user must determine the suitability of our materials before adopting them on a commercial scale. Suggested uses of our products are not recommendations to use our products in violation of any patent or as a license under any patent of Rockland Immunochemicals, Inc. If you require a commercial license to use this material and do not have one, then return this material, unopened to: Rockland Inc., P.O. BOX 5199, Limerick, Pennsylvania, USA.