

Datasheet for 200-6137S

Glucose Oxidase Antibody

Overview

Description:	Anti-Glucose Oxidase (SHEEP) Antibody - 200-6137S
Item No.:	200-6137S
Size:	25 µL
Applications:	Dot Blot
Reactivity:	Aspergillus niger
Host Species:	Sheep

Product Details

Background:	Glucose Oxidase enzyme is widely applied for the determination of glucose in body fluids and in removing residual glucose or oxygen from foods and beverages. Furthermore, glucose oxidase-producing molds such as aspergillus and penicillium species are used for the biological production of gluconic acid.
Synonyms:	sheep anti-Glucose Oxidase Antibody, Beta D Glucose Oxygen 1 Oxido Reductase antibody, Glucose oxidase (Precursor) antibody, Glucose Oxyhydrase antibody, GOD antibody
Host Species:	Sheep
Clonality:	Polyclonal
Format:	IgG

Target Details

Gene Name:	gox
Reactivity:	Aspergillus niger
Immunogen Type:	Native Protein
Immunogen:	Glucose Oxidase [Aspergillus niger]

Purity/Specificity: Anti-GLUCOSE OXIDASE is an IgG fraction antibody purified from monospecific antiserum by a multi-step process which includes delipidation, salt fractionation and ion exchange chromatography followed by extensive dialysis against the buffer stated above. Assay by immunoelectrophoresis resulted in a single precipitin arc against anti-Sheep Serum as well as purified and partially purified Glucose Oxidase [*Aspergillus niger*]. Cross reactivity against Glucose Oxidase from other tissues and species may occur but have not been specifically determined.

Relevant Links:

- [UniProtKB - P13006](#)
- [GeneID - 2683500](#)

Application Details

Tested Applications: Dot Blot

Application Note: Glucose Oxidase antibody has been tested by dot blot and is suitable to be assayed against 1.0 ug of Glucose Oxidase [*Aspergillus niger*] in a standard ELISA using Peroxidase conjugated Affinity Purified anti-Sheep IgG [H&L] (Rabbit) code #613-4302 and (ABTS (2,2'-azino-bis-[3-ethylbenthiiazoline-6-sulfonic acid]) code # ABTS-100 as a substrate for 30 minutes at room temperature. A working dilution of 1:2,000 to 1:10,000 of the reconstitution concentration is suggested for this product.

Assay Dilutions: All assays should be optimized by the user. Recommended dilutions (if any) may be listed below.

ELISA: 1:5,500 - 1:25,000

WB: 1:500 - 1:3,000

Formulation

Physical State: Liquid (sterile filtered)

Buffer: 0.02 M Potassium Phosphate, 0.15 M Sodium Chloride, pH 7.2

Preservative: 0.01% (w/v) Sodium Azide

Stabilizer: None

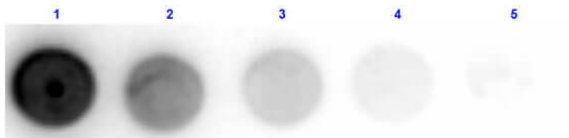
Shipping & Handling

Shipping Condition: Dry Ice

Storage Condition: Store vial at -20° C or below prior to opening. This vial contains a relatively low volume of reagent (25 µL). To minimize loss of volume dilute 1:10 by adding 225 µL of the buffer stated above directly to the vial. Recap, mix thoroughly and briefly centrifuge to collect the volume at the bottom of the vial. Use this intermediate dilution when calculating final dilutions as recommended below. Store the vial at -20°C or below after dilution. Avoid cycles of freezing and thawing.

Expiration: Expiration date is one (1) year from date of receipt.

Images



Dot Blot

Dot Blot results of Sheep Anti-Glucose Oxidase Antibody. Dots are Glucose Oxidase at (1) 100ng, (2) 33.3ng, (3) 11.1ng, (4) 3.70ng, (5) 1.23ng. Blocking: MB-070 for 30 min at RT. Primary Antibody: Sheep Anti-Glucose Oxidase Antibody at 10µg/mL for 1hr at RT. Secondary Antibody: Donkey Anti-Sheep-HRP (p/n 613-703-168) at 1:40,000 for 30min at RT. Imaged with BioRad ChemiDoc, Chemi filter.

Disclaimer

This product is for research use only and is not intended for therapeutic or diagnostic applications. Please contact a technical service representative for more information. All products of animal origin manufactured by Rockland Immunochemicals are derived from starting materials of North American origin. Collection was performed in United States Department of Agriculture (USDA) inspected facilities and all materials have been inspected and certified to be free of disease and suitable for exportation. All properties listed are typical characteristics and are not specifications. All suggestions and data are offered in good faith but without guarantee as conditions and methods of use of our products are beyond our control. All claims must be made within 30 days following the date of delivery. The prospective user must determine the suitability of our materials before adopting them on a commercial scale. Suggested uses of our products are not recommendations to use our products in violation of any patent or as a license under any patent of Rockland Immunochemicals, Inc. If you require a commercial license to use this material and do not have one, then return this material, unopened to: Rockland Inc., P.O. BOX 5199, Limerick, Pennsylvania, USA.