

Datasheet for 200-603-144S

Aspartate Transaminase Antibody Peroxidase Conjugated

Overview

Description:	Anti-Aspartate Transaminase (AST) (SHEEP) Antibody Peroxidase Conjugated - 200-603-144S
Item No.:	200-603-144S
Size:	25 µL
Applications:	Dot Blot
Reactivity:	Pig
Host Species:	Sheep

Product Details

Background:	Aspartate Transaminase is an important regulator of levels of glutamate, the major excitatory neurotransmitter of the vertebrate central nervous system. It acts as a scavenger of glutamate in brain neuroprotection. The aspartate aminotransferase activity is involved in hepatic glucose synthesis during development and in adipocyte glyceroneogenesis. Aspartate Transaminase is found in the liver, heart, skeletal muscle, kidneys, brain, and red blood cells, and it is commonly measured clinically as a marker for liver health.
Synonyms:	sheep anti-Aspartate Transaminase HRP conjugated Antibody, peroxidase conjugated sheep anti-Aspartate Transaminase Antibody, Aspartate aminotransferase 1 antibody, Aspartate aminotransferase cytoplasmic antibody, Aspartate aminotransferase cytosolic antibody, ec 2.6.1.1 antibody, GIG 18 antibody, GIG18 antibody, Glutamate oxaloacetate transaminase 1 antibody
Host Species:	Sheep
Conjugate:	Peroxidase (HRP)
Clonality:	Polyclonal
Format:	IgG

Target Details

Gene Name:	GOT1
Reactivity:	Pig
Immunogen Type:	Native Protein

Immunogen:	Aspartate Aminotransferase (AST) [Pig Heart]
Purity/Specificity:	Aspartate Transaminase is an IgG fraction antibody purified from monospecific antiserum by a multi-step process which includes delipidation, salt fractionation and ion exchange chromatography followed by extensive dialysis against the buffer stated above. Assay by immunoelectrophoresis resulted in a single precipitin arc against anti-Peroxidase, anti-Sheep Serum as well as purified and partially purified Aspartate Aminotransferase (AST) [Pig Heart]. Cross reactivity against Aspartate Aminotransferase (AST) from other sources may occur but has not been specifically determined.
Relevant Links:	<ul style="list-style-type: none">• UniProtKB - P00503• NCBI - NP_999092.1• GenelD - 396967

Application Details

Tested Applications:	Dot Blot
Application Note:	Anti-Aspartate Transaminase Peroxidase Conjugated has been tested by dot blot and is suitable to be assayed against 1.0 ug of Aspartate Aminotransferase (AST) [Pig Heart] in a standard capture ELISA using ABTS (2,2'-azino-bis-[3-ethylbenthiazoline-6-sulfonic acid]) code # ABTS-100 as a substrate for 30 minutes at room temperature. A working dilution of 1:20,000 to 1:100,000 of the reconstitution concentration is suggested for this product.
Assay Dilutions:	All assays should be optimized by the user. Recommended dilutions (if any) may be listed below.
ELISA:	1:10,000 - 1:40,000
WB:	1:1,000 - 1:5,000

Formulation

Physical State:	Liquid (sterile filtered)
Concentration:	1 mg/mL by UV absorbance at 280 nm
Buffer:	0.02 M Potassium Phosphate, 0.15 M Sodium Chloride, pH 7.2
Preservative:	0.01% (w/v) Gentamicin Sulfate. Do NOT add Sodium Azide!
Stabilizer:	10 mg/mL Bovine Serum Albumin (BSA) - Immunoglobulin and Protease free

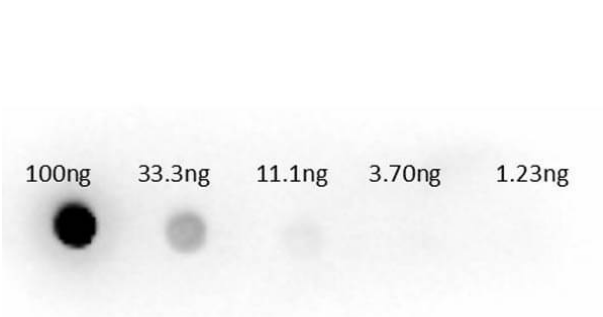
Shipping & Handling

Shipping Condition:	Dry Ice
----------------------------	---------

Storage Condition: Store vial at -20° C or below prior to opening. This vial contains a relatively low volume of reagent (25 µL). To minimize loss of volume dilute 1:10 by adding 225 µL of the buffer stated above directly to the vial. Recap, mix thoroughly and briefly centrifuge to collect the volume at the bottom of the vial. Use this intermediate dilution when calculating final dilutions as recommended below. Store the vial at -20°C or below after dilution. Avoid cycles of freezing and thawing.

Expiration: Expiration date is one (1) year from date of receipt.

Images



Dot Blot

Dot Blot of Sheep anti-Aspartate Transaminase Antibody.
Lane 1: 100ng. Lane 2: 33.3ng. Lane 3: 11.1ng. Lane 4: 3.7ng.
Lane 5: 1.23ng. Secondary Antibody: Sh-a-Aspartate
Transaminase (AST) HRP 200-603-144 at 1µg/mL. Blocking
Buffer: BlockOut MB-073 for 30 min at RT.

Disclaimer

This product is for research use only and is not intended for therapeutic or diagnostic applications. Please contact a technical service representative for more information. All products of animal origin manufactured by Rockland Immunochemicals are derived from starting materials of North American origin. Collection was performed in United States Department of Agriculture (USDA) inspected facilities and all materials have been inspected and certified to be free of disease and suitable for exportation. All properties listed are typical characteristics and are not specifications. All suggestions and data are offered in good faith but without guarantee as conditions and methods of use of our products are beyond our control. All claims must be made within 30 days following the date of delivery. The prospective user must determine the suitability of our materials before adopting them on a commercial scale. Suggested uses of our products are not recommendations to use our products in violation of any patent or as a license under any patent of Rockland Immunochemicals, Inc. If you require a commercial license to use this material and do not have one, then return this material, unopened to: Rockland Inc., P.O. BOX 5199, Limerick, Pennsylvania, USA.