

Datasheet for 200-601-146**Lactoperoxidase Antibody****Overview**

Description:	Anti-Lactoperoxidase (Bovine Milk) (SHEEP) Antibody (BULK ORDER) - 200-601-146
Item No.:	200-601-146
Size:	50 mg
Applications:	WB
Reactivity:	Bovine
Host Species:	Sheep

Product Details

Background:	Lactoperoxidase is an antimicrobial agent which utilizes hydrogen peroxide and thiocyanate (SCN) to generate the antimicrobial substance hypothiocyanous acid (HOSCN). It may protect the udder from infection and promote growth in newborn calves. It inhibits growth of the following bacterial species: E.coli, K.pneumoniae, P.aeruginosa, S.sonnei, S.saphrophyticus, S.epidermidis, and S.dysenteriae.
Synonyms:	sheep anti-Lactoperoxidase Antibody, LPO antibody, Salivary peroxidase antibody, SAPX antibody, SPO antibody
Host Species:	Sheep
Clonality:	Polyclonal
Format:	IgG

Target Details

Gene Name:	LPO
Reactivity:	Bovine
Immunogen Type:	Native Protein
Immunogen:	Lactoperoxidase [Bovine Milk]

Purity/Specificity: Anti-LACTOPEROXIDASE is an IgG fraction antibody purified from monospecific antiserum by a multi-step process which includes delipidation, salt fractionation and ion exchange chromatography followed by extensive dialysis against the buffer stated above. Assay by immunoelectrophoresis resulted in a single precipitin arc against anti-Sheep Serum as well as purified and partially purified Lactoperoxidase [Bovine Milk]. Cross reactivity against Lactoperoxidase from other tissues and species may occur but have not been specifically determined.

Relevant Links:

- [UniProtKB - P80025](#)
- [NCBI - P80025.1](#)
- [GeneID - 280844](#)

Application Details

Tested Applications: WB

Application Note: Lactoperoxidase antibody has been tested by western blot and is suitable to be assayed against 1.0 ug of Lactoperoxidase [Bovine Milk] in a standard ELISA using Peroxidase conjugated Affinity Purified anti-Sheep IgG [H&L] (Rabbit) code #613-4302 and (ABTS (2,2'-azino-bis-[3-ethylbenthiazoline-6-sulfonic acid]) code # ABTS-100 as a substrate for 30 minutes at room temperature. A working dilution of 1:1,000 to 1:5,000 of the reconstitution concentration is suggested for this product.

Assay Dilutions: All assays should be optimized by the user. Recommended dilutions (if any) may be listed below.

ELISA: 1:5,000 - 1:20,000

IP: 1:100

WB: 1:500 - 1:5,000

Formulation

Physical State: Lyophilized

Concentration: 10.0 mg/mL by UV absorbance at 280 nm

Buffer: 0.02 M Potassium Phosphate, 0.15 M Sodium Chloride, pH 7.2

Preservative: 0.01% (w/v) Sodium Azide

Stabilizer: None

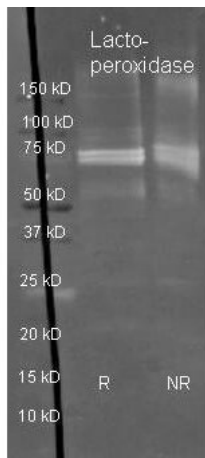
Reconstitution Volume: 5.0 mL

Reconstitution Buffer: Restore with deionized water (or equivalent)

Shipping & Handling

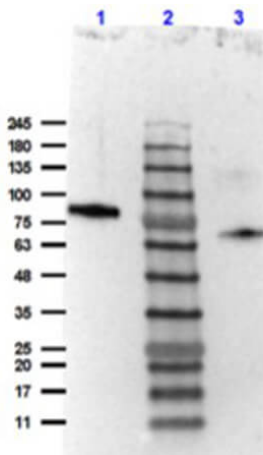
Shipping Condition:	Ambient
Storage Condition:	Store vial at 4° C prior to restoration. For extended storage aliquot contents and freeze at -20° C or below. Avoid cycles of freezing and thawing. Centrifuge product if not completely clear after standing at room temperature. This product is stable for several weeks at 4° C as an undiluted liquid. Dilute only prior to immediate use.
Expiration:	Expiration date is one (1) year from date of receipt.

Images



Western Blot

Rockland Sheep anti Lactoperoxidase antibody (200-601-146 lot 5243) was used to detect Lactoperoxidase under reducing (R) and non-reducing (NR) conditions. Reduced samples of purified target proteins contained 4% BME and were boiled for 5 minutes. Samples of ~1µg of protein per lane were run by SDS-PAGE. Protein was transferred to nitrocellulose and probed with 1:3000 dilution of primary antibody (ON 4 C in MB-070). Detection shown was using Dylight 488 conjugated secondary antibody (605-741-125 lot 21094 1:10K in TBS/MB-070 1 hr RT). Images were collected using the BioRad VersaDoc System



Western Blot

Western Blot of Sheep Anti-Lactoperoxidase (bovine milk) Antibody. Lane 1: Lactoperoxidase Reduced [0.1µg]. Lane 2: Opal prestained molecular weight marker (p/n MB-210-0500). Lane 3: Lactoperoxidase Non-Reduced [0.1µg]. Primary Antibody: Anti-Lactoperoxidase at 1:500 overnight at 4°C. Secondary Antibody: Rabbit Anti-Sheep IgG HRP (p/n 613-4302) at 1:40,000 for 30mins at RT. Blocking: BlockOut buffer (p/n MB-073) 1 hr RT. Expected MW: 78kDa. Exposure: 10 sec.

Disclaimer

This product is for research use only and is not intended for therapeutic or diagnostic applications. Please contact a technical service representative for more information. All products of animal origin manufactured by Rockland Immunochemicals are derived from starting materials of North American origin. Collection was performed in United States Department of Agriculture (USDA) inspected facilities and all materials have been inspected and certified to be free of disease and suitable for exportation. All properties listed are typical characteristics and are not specifications. All suggestions and data are offered in good faith but without guarantee as conditions and methods of use of our products are beyond our control. All claims must be made within 30 days following the date of delivery. The prospective user must determine the suitability of our materials before adopting them on a commercial scale. Suggested uses of our products are not recommendations to use our products in violation of any patent or as a license under any patent of Rockland Immunochemicals, Inc. If you require a commercial license to use this material and do not have one, then return this material, unopened to: Rockland Inc., P.O. BOX 5199, Limerick, Pennsylvania, USA.