

Datasheet for 200-526-N87

CD62L Allophycocyanin Antibody**Overview**

Description:	Anti-CD62L (RAT) Allophycocyanin Conjugated Monoclonal Antibody - 200-526-N87
Item No.:	200-526-N87
Size:	100 µg
Applications:	FC
Reactivity:	Mouse
Host Species:	Rat

Product Details

Background: Anti-CD62L antibody is specific for mouse CD62L, also known as L-Selectin, a cell adhesion molecule which facilitates lymphocyte rolling on activated vascular endothelium and homing to high endothelial venules (HEV) as immune cells transmigrate from blood into peripheral tissues. L-Selectin is a member of a family of Selectin molecules which act together with the integrin family of adhesion molecules to mediate leukocyte-endothelial interactions. L-Selectin is characteristically expressed by neutrophils, and is also found on B cells, monocytes, granulocytes, and at varying levels on naïve, effector and memory T cells. It is rapidly shed upon cell activation, releasing into the circulation a soluble form whose biological role is of particular interest in cancer biology research. The MEL-14 antibody may be used as a phenotypic marker for CD62L expression on a variety of immune cell types. Please note that CD62L (L-Selectin) itself is also referred to as MEL-14 in the literature.

Synonyms: L-selectin
CD62 antigen-like family member L
Leukocyte adhesion molecule 1
LAM-1
Leukocyte-endothelial cell adhesion molecule 1
LECAM1
Lymph node homing receptor
Lymphocyte antigen 22
Ly-22
Lymphocyte surface MEL-14 antigen
CD62L
Sell
Lnh, Ly-22, Ly22

Host Species: Rat

Conjugate:	Allophycocyanine (APC)
Clonality:	Monoclonal
Clone ID:	MEL-14
Format:	IgG2a
F/P Ratio:	1-2

Target Details

Gene Name:	Sell
Reactivity:	Mouse
Immunogen:	Anti-CD62L Antibody (Monoclonal) was produced by repeated immunizations with CD62L antigen.
Purity/Specificity:	Allophycocyanin conjugated CD62L Monoclonal Antibody was purified from tissue culture supernatant via affinity chromatography and is directed against mouse CD62L. Cross reactivity with CD62L from other sources has not been tested. Anti-CD62L is conjugated with APC under optimal conditions and the solution is free of unconjugated APC.
Relevant Links:	<ul style="list-style-type: none">• UniProtKB - P18337• NCBI - NP_035476.1• GeneID - 20343

Application Details

Tested Applications:	FC
Application Note:	Anti-CD62L is tested for FLOW and useful for Immunohistochemistry and Immunoprecipitation using mouse spleen cells, or an appropriate cell type (where indicated). Researchers should determine optimal titers for applications that are not stated.
Assay Dilutions:	All assays should be optimized by the user. Recommended dilutions (if any) may be listed below.
FC:	10 μ L/10 ⁶ cells (0.1 μ g)
IHC:	User Optimized
IP:	User Optimized

Formulation

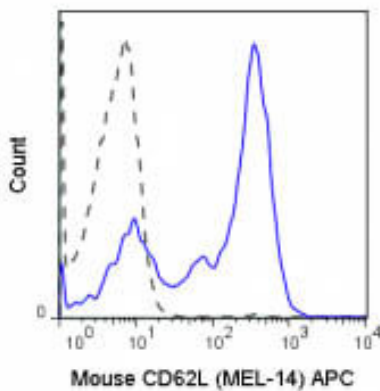
Physical State:	Liquid (sterile filtered)
------------------------	---------------------------

Concentration:	0.2 mg/mL by UV absorbance at 280 nm
Buffer:	0.01 M Sodium Phosphate, 0.15 M Sodium Chloride, pH 7.2
Preservative:	0.09% (w/v) Sodium Azide
Stabilizer:	0.1% Gelatin

Shipping & Handling

Shipping Condition:	Wet Ice
Storage Condition:	Store vial at 4° C prior to opening. Dilute only prior to immediate use. This product is stable at 4° C as an undiluted liquid. Use subdued lighting during handling and incubation of cells prior to analysis. Store reagent in the dark. DO NOT FREEZE.
Expiration:	Expiration date is six (6) months from date of receipt.

Images



Flow Cytometry

Flow Cytometry of anti-CD62L Allophycocyanin Conjugated Monoclonal Antibody. Cells: C57Bl/6 mouse splenocytes. Stimulation: none. Antibody: (Dotted Line) APC Rat IgG2a isotype control; (Solid Line) Allophycocyanin Anti-CD62L antibody using 0.06 ug.

Disclaimer

This product is for research use only and is not intended for therapeutic or diagnostic applications. Please contact a technical service representative for more information. All products of animal origin manufactured by Rockland Immunochemicals are derived from starting materials of North American origin. Collection was performed in United States Department of Agriculture (USDA) inspected facilities and all materials have been inspected and certified to be free of disease and suitable for exportation. All properties listed are typical characteristics and are not specifications. All suggestions and data are offered in good faith but without guarantee as conditions and methods of use of our products are beyond our control. All claims must be made within 30 days following the date of delivery. The prospective user must determine the suitability of our materials before adopting them on a commercial scale. Suggested uses of our products are not recommendations to use our products in violation of any patent or as a license under any patent of Rockland Immunochemicals, Inc. If you require a commercial license to use this material and do not have one, then return this material, unopened to: Rockland Inc., P.O. BOX 5199, Limerick, Pennsylvania, USA.