

Datasheet for 200-526-N83

CD45 Allophycocyanin Antibody

Overview

Description:	Anti-CD45 (RAT) Allophycocyanin Conjugated Monoclonal Antibody - 200-526-N83
Item No.:	200-526-N83
Size:	100 µg
Applications:	FC
Reactivity:	Mouse
Host Species:	Rat

Product Details

Background:	The 30-F11 antibody reacts with mouse CD45, which is one of the most abundant hematopoietic markers and is expressed on all leukocytes (the Leukocyte Common Antigen, LCA). CD45 is a protein tyrosine phosphatase existing in several isoforms, each being generated and expressed in cell-specific patterns. With its broad cell distribution, CD45 is critical for many leukocyte functions, regulating signal transduction and cell activation associated with the T cell receptor, B cell receptor, and IL-2 receptor. Other forms of CD45, with restricted cellular expression, include CD45R (B220), CD45RA, CD45RB, CD45RO and others. The 30-F11 antibody is widely used as a leukocyte marker for B cells, T cell subsets and NK cell subsets.
Synonyms:	Receptor-type tyrosine-protein phosphatase C, , ukocyte common antigen, L-CA, Lymphocyte antigen 5, Ly-5, T200, CD45, Ptprc, Ly-5
Host Species:	Rat
Conjugate:	Allophycocyanine (APC)
Clonality:	Monoclonal
Clone ID:	30-F11
Format:	IgG2b
F/P Ratio:	1-2

Target Details

Gene Name:	Ptprc
-------------------	-------

Reactivity:	Mouse
Immunogen:	Anti-CD45 Antibody (Monoclonal) was produced by repeated immunizations with CD45 antigen.
Purity/Specificity:	Allophycocyanin conjugated CD45 Monoclonal Antibody was purified from tissue culture supernatant via affinity chromatography and is directed against mouse CD45. Cross reactivity with CD45 from other sources has not been tested. Anti-CD45 is conjugated with APC under optimal conditions and the solution is free of unconjugated APC.
Relevant Links:	<ul style="list-style-type: none">UniProtKB - P06800

Application Details

Tested Applications:	FC
Application Note:	Anti-CD45 is tested for Flow Cytometry and useful for Immunoprecipitation, Immunohistochemistry, Immunofluorescence, and Western Blot using mouse spleen cells, or an appropriate cell type (where indicated). Researchers should determine optimal titers for applications that are not stated.
Assay Dilutions:	All assays should be optimized by the user. Recommended dilutions (if any) may be listed below.
FC:	10 μ L/10 ⁶ cells (0.1 μ g)
IF:	User Optimized
IHC:	User Optimized
IP:	User Optimized
WB:	User Optimized

Formulation

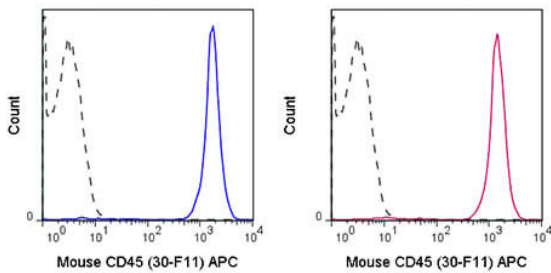
Physical State:	Liquid (sterile filtered)
Concentration:	0.2 mg/mL by UV absorbance at 280 nm
Buffer:	0.01 M Sodium Phosphate, 0.15 M Sodium Chloride, pH 7.2
Preservative:	0.09% (w/v) Sodium Azide
Stabilizer:	0.1% Gelatin

Shipping & Handling

Shipping Condition:	Wet Ice
----------------------------	---------

Storage Condition:	Store vial at 4° C prior to opening. Dilute only prior to immediate use. This product is stable at 4° C as an undiluted liquid. Use subdued lighting during handling and incubation of cells prior to analysis. Store reagent in the dark. DO NOT FREEZE.
Expiration:	Expiration date is six (6) months from date of receipt.

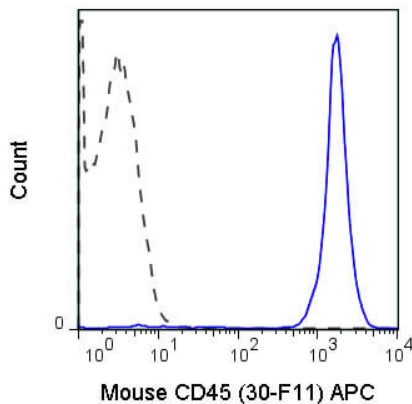
Images



Flow Cytometry

Flow Cytometry of anti-CD45 Allophycocyanin Conjugated Monoclonal Antibody. Cells: C57Bl/6 splenocytes.

Stimulation: None. Antibody: (Dotted Line) APC Mouse IgG2b isotype control; (Blue Line) Allophycocyanin Anti-CD45 antibody using 0.125 μ g; (Red line) APC Anti-CD45 antibody control.



Flow Cytometry

Flow Cytometry of anti-CD45 Allophycocyanin Conjugated Monoclonal Antibody. Cells: C57Bl/6 splenocytes.

Stimulation: None. Antibody: (Dotted Line) APC Mouse IgG2b isotype control; (Blue Line) Allophycocyanin Anti-CD45 antibody using 0.125 μ g.

Disclaimer

This product is for research use only and is not intended for therapeutic or diagnostic applications. Please contact a technical service representative for more information. All products of animal origin manufactured by Rockland Immunochemicals are derived from starting materials of North American origin. Collection was performed in United States Department of Agriculture (USDA) inspected facilities and all materials have been inspected and certified to be free of disease and suitable for exportation. All properties listed are typical characteristics and are not specifications. All suggestions and data are offered in good faith but without guarantee as conditions and methods of use of our products are beyond our control. All claims must be made within 30 days following the date of delivery. The prospective user must determine the suitability of our materials before adopting them on a commercial scale. Suggested uses of our products are not recommendations to use our products in violation of any patent or as a license under any patent of Rockland Immunochemicals, Inc. If you require a commercial license to use this material and do not have one, then return this material, unopened to: Rockland Inc., P.O. BOX 5199, Limerick, Pennsylvania, USA.