

Datasheet for 200-526-N79

CD11b Allophycocyanin Antibody

Overview

Description:	Anti-CD11b (RAT) Allophycocyanin Conjugated Monoclonal Antibody - 200-526-N79
Item No.:	200-526-N79
Size:	100 µg
Applications:	FC
Reactivity:	Mouse
Host Species:	Rat

Product Details

Background: CD11b antibody reacts with human and mouse CD11b, also known as integrin alpha M. This 165-170 kDa cell surface glycoprotein is part of a family of integrin receptors that mediate adhesion between cells (cell-cell) and components of the extracellular matrix, e.g. fibrinogen (cell-matrix). In addition, integrins are active signaling receptors which recruit leukocytes to inflammatory sites and promote cell activation. Complete, functional integrin receptors consist of distinct combinations of integrin chains which are differentially expressed. Integrin alpha M (CD11b) assembles with Integrin beta-2 (CD18) into a receptor known as Macrophage Antigen-1 (Mac-1) or complement receptor type 3 (CR3). This receptor binds and induces intracellular signaling through ICAM-1 on endothelial cells and can also facilitate removal of iC3b bearing foreign cells. The M1/70 antibody is widely used as a marker for CD11b expression on mouse macrophages, granulocytes, neutrophils, and NK cells.

Synonyms:	CD11b
Host Species:	Rat
Conjugate:	Allophycocyanine (APC)
Clonality:	Monoclonal
Clone ID:	M1/70
Format:	IgG2b
F/P Ratio:	1-2

Target Details

Gene Name:	Itgam
Reactivity:	Mouse
Immunogen:	Anti-CD11b Antibody (Monoclonal) was produced by repeated immunizations with CD11b antigen.
Purity/Specificity:	Allophycocyanin conjugated CD11b Monoclonal Antibody was purified from tissue culture supernatant via affinity chromatography and is directed against mouse CD11b. Cross reactive to Human, Chimpanzee, Baboon, Cynomolgus, and Rhesus. The antibody is also reported to be cross-reactive for Rhesus macaque CD11b. Cross reactivity with CD11b from other sources has not been tested. Anti-CD11b is conjugated with APC under optimal conditions and the solution is free of unconjugated APC.
Relevant Links:	<ul style="list-style-type: none">• UniProtKB - A1E2I0

Application Details

Tested Applications:	FC
Application Note:	Anti-CD11b is tested for FLOW and useful for Immunoprecipitation and Immunohistochemistry using mouse spleen cells, or an appropriate cell type (where indicated). Researchers should determine optimal titers for applications that are not stated
Assay Dilutions:	All assays should be optimized by the user. Recommended dilutions (if any) may be listed below.
FC:	10 μ L/ 10^6 cells (0.1 μ g)
IHC:	User Optimized
IP:	User Optimized

Formulation

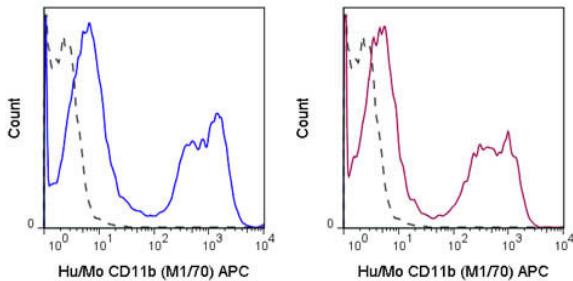
Physical State:	Liquid (sterile filtered)
Concentration:	0.2mg/ml by UV absorbance at 280 nm
Buffer:	0.01 M Sodium Phosphate, 0.15 M Sodium Chloride, pH 7.2
Preservative:	0.09% (w/v) Sodium Azide
Stabilizer:	0.1% Gelatin

Shipping & Handling

Shipping Condition:	Wet Ice
----------------------------	---------

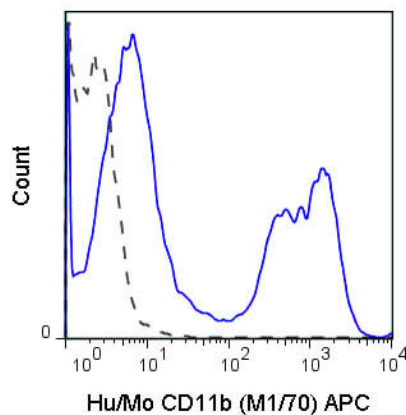
Storage Condition:	Store vial at 4° C prior to opening. Dilute only prior to immediate use. This product is stable at 4° C as an undiluted liquid. Use subdued lighting during handling and incubation of cells prior to analysis. Store reagent in the dark. DO NOT FREEZE.
Expiration:	Expiration date is six (6) months from date of receipt.

Images



Flow Cytometry

Flow Cytometry of anti-CD11b Allophycocyanin Conjugated Monoclonal Antibody. Cells: C57Bl/6 bone marrow cells. Stimulation: none. Antibody: (Dotted Line) APC Mouse IgG1 isotype control; (Blue Line) Allophycocyanin Anti-CD11b antibody; (Red Line) Allophycocyanin Anti-CD11b antibody using 0.125 ug.



Flow Cytometry

Flow Cytometry of anti-CD11b Allophycocyanin Conjugated Monoclonal Antibody. Cells: Human peripheral blood lymphocytes. Stimulation: none. Antibody: (Dotted Line) APC Mouse IgG1 isotype control; (Solid Line) Allophycocyanin Anti-CD11b antibody using 0.125 ug.

Disclaimer

This product is for research use only and is not intended for therapeutic or diagnostic applications. Please contact a technical service representative for more information. All products of animal origin manufactured by Rockland Immunochemicals are derived from starting materials of North American origin. Collection was performed in United States Department of Agriculture (USDA) inspected facilities and all materials have been inspected and certified to be free of disease and suitable for exportation. All properties listed are typical characteristics and are not specifications. All suggestions and data are offered in good faith but without guarantee as conditions and methods of use of our products are beyond our control. All claims must be made within 30 days following the date of delivery. The prospective user must determine the suitability of our materials before adopting them on a commercial scale. Suggested uses of our products are not recommendations to use our products in violation of any patent or as a license under any patent of Rockland Immunochemicals, Inc. If you require a commercial license to use this material and do not have one, then return this material, unopened to: Rockland Inc., P.O. BOX 5199, Limerick, Pennsylvania, USA.