

Datasheet for 200-508-N79

CD11b Phycoerythrin Antibody**Overview**

Description:	Anti-CD11b (RAT) Phycoerythrin Conjugated Monoclonal Antibody - 200-508-N79
Item No.:	200-508-N79
Size:	200 µg
Applications:	FC, IF, Multiplex
Reactivity:	Mouse
Host Species:	Rat

Product Details

Background:	CD11b is a 170 kD glycoprotein also known as α M integrin, Mac-1 α subunit, Mol, CR3, and Ly-40. CD11b is a member of the integrin family, primarily expressed on granulocytes, monocytes/macrophages, dendritic cells, NK cells, and subsets of T and B cells. CD11b non-covalently associates with CD18 (β 2 integrin) to form Mac-1. Mac-1 plays an important role in cell-cell interaction by binding its ligands ICAM-1 (CD54), ICAM-2 (CD102), ICAM-4 (CD242), iC3b, and fibrinogen.
Synonyms:	CD11b
Host Species:	Rat
Conjugate:	R-Phycoerythrin (RPE)
Clonality:	Monoclonal
Clone ID:	M1/70
Format:	IgG2b
F/P Ratio:	1-2

Target Details

Gene Name:	Itgam
Reactivity:	Mouse

Immunogen:	Anti-CD11b Antibody (Monoclonal) was produced by repeated immunizations with CD11b antigen.
Purity/Specificity:	Phycoerythrin conjugated CD11b Monoclonal Antibody was purified from tissue culture supernatant via affinity chromatography and is directed against mouse CD11b. Cross reactivity Human, Chimpanzee, Baboon, Cynomolgus, Rhesus, Rabbit (Lapine). Cross-reactivity with CD11b from other sources has not been tested. Anti-CD11b is conjugated with PE under optimal conditions and the solution is free of unconjugated PE.
Relevant Links:	<ul style="list-style-type: none">• UniProtKB - A1E210

Application Details

Tested Applications:	FC, IF, Multiplex
Application Note:	Anti-CD11b is tested for FLOW and IF; and useful for Immunoprecipitation and Immunohistochemistry using mouse spleen cells, or an appropriate cell type (where indicated). Researchers should determine optimal titers for applications that are not stated.
Assay Dilutions:	All assays should be optimized by the user. Recommended dilutions (if any) may be listed below.
FC:	10 μ L/10 ⁶ cells (0.1 μ g)
IF:	User Optimized
IHC:	User Optimized
IP:	User Optimized

Formulation

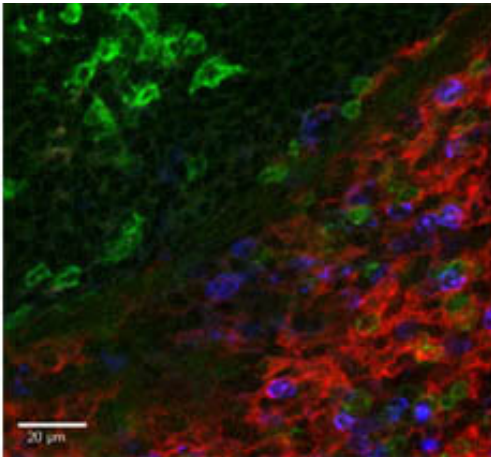
Physical State:	Liquid (sterile filtered)
Concentration:	0.2 mg/mL Sufficient to run approximately 100 tests
Buffer:	0.01 M Sodium Phosphate, 0.15 M Sodium Chloride, pH 7.2
Preservative:	0.09% (w/v) Sodium Azide
Stabilizer:	None

Shipping & Handling

Shipping Condition:	Wet Ice
----------------------------	---------

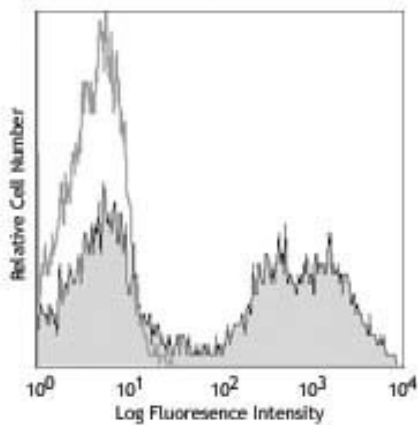
Storage Condition:	Store vial at 4° C prior to opening. Dilute only prior to immediate use. This product is stable at 4° C as an undiluted liquid. Use subdued lighting during handling and incubation of cells prior to analysis. Store reagent in the dark. DO NOT FREEZE.
Expiration:	Expiration date is six (6) months from date of receipt.

Images



Immunofluorescence Microscopy

Immunofluorescence Microscopy of Anti-CD11b Phycoerythrin Conjugated antibody. Tissue: mouse spleen. Fixation: 0.5% PFA. Antigen retrieval: not required. Primary antibody: CD11b PE antibody at $\leq 0.25 \mu\text{g}$ per 10×6 cells in $100 \mu\text{l}$ volume for 1 h at RT. Secondary antibody: Alexa Fluor® 488 secondary antibody at 1:10,000 for 45 min at RT. Staining: Alexa Fluor® 488 F4/80 (red), Brilliant Violet 421™ CD3ε (green), and PE conjugated CD11b (blue).



Flow Cytometry

Flow Cytometry of anti-CD11b Phycoerythrin Conjugated Monoclonal Antibody. Cells: C57Bl/6 mouse bone marrow. Stimulation: none. Antibody: (Dotted Line) PE Rat IgG2b isotype control; (Filled Line) Phycoerythrin Anti-CD11b antibody.

Disclaimer

This product is for research use only and is not intended for therapeutic or diagnostic applications. Please contact a technical service representative for more information. All products of animal origin manufactured by Rockland Immunochemicals are derived from starting materials of North American origin. Collection was performed in United States Department of Agriculture (USDA) inspected facilities and all materials have been inspected and certified to be free of disease and suitable for exportation. All properties listed are typical characteristics and are not specifications. All suggestions and data are offered in good faith but without guarantee as conditions and methods of use of our products are beyond our control. All claims must be made within 30 days following the date of delivery. The prospective user must determine the suitability of our materials before adopting them on a commercial scale. Suggested uses of our products are not recommendations to use our products in violation of any patent or as a license under any patent of Rockland Immunochemicals, Inc. If you require a commercial license to use this material and do not have one, then return this material, unopened to: Rockland Inc., P.O. BOX 5199, Limerick, Pennsylvania, USA.