

Datasheet for 200-508-M73

CD25 Phycoerythrin Antibody**Overview**

Description:	Anti-CD25 (RAT) Phycoerythrin Conjugated Monoclonal Antibody - 200-508-M73
Item No.:	200-508-M73
Size:	100 µg
Applications:	FC
Reactivity:	Mouse
Host Species:	Rat

Product Details

Background: The PC61.5 antibody is specific for mouse CD25, a 55 kDa surface protein also known as the Interleukin-2 Receptor alpha chain, or IL-2R alpha. CD25 may bind IL-2 by itself, although with low affinity and without induction of cell signaling. CD25 is also expressed within a high-affinity complex, along with the IL-2R beta chain (CD122) and the common gamma chain (CD132), to form a signaling receptor complex. Expression of CD25 varies during developmental stages of T and B cells, is induced on activated mature T and B cells, and is present on subsets of dendritic cells. CD25 signaling as part of the IL-2 receptor complex triggers T cell activation and proliferation, as well as modulating the differentiation and function of Th17 cells, T regulatory (Treg) cells, and dendritic cells. The PC61.5 antibody is used as a marker for T cells, B cells and dendritic cell subsets. Expression of CD25, CD4 and the transcription factor Foxp3 is regarded as a phenotypic signature for Treg cells. As such, this antibody is widely used for depletion of Treg cells in vivo, as well as to distinguish Treg cells from naive or conventional T cells which are CD25.

Synonyms:	Interleukin-2 receptor subunit alpha, IL-2 receptor subunit alpha, IL-2-RA, IL-2R subunit alpha, IL2-RA, TAC antigen, p55, CD25 Antibody
Host Species:	Rat
Conjugate:	R-Phycoerythrin (RPE)
Clonality:	Monoclonal
Clone ID:	PC61
Format:	IgG1
F/P Ratio:	1-2

Target Details

Gene Name:	Il2r
Reactivity:	Mouse
Immunogen Type:	Other
Immunogen:	Anti-CD25 Antibody (Monoclonal) was produced by repeated immunizations with IL-2-dependent cytolytic mouse T-cell clone B6.1.
Purity/Specificity:	Phycoerythrin conjugated CD25 Monoclonal Antibody was Protein G Purified and is directed against mouse CD25. Reactivity is observed against mouse CD25. Cross reactivity with CD25 from other sources has not been tested.
Relevant Links:	<ul style="list-style-type: none">• UniProtKB - P01590• NCBI - NP_032393.3• GeneID - 16184

Application Details

Tested Applications:	FC
Application Note:	Anti-CD25 is tested for FLOW and useful for IF. Researchers should determine optimal titers for applications that are not stated.
Assay Dilutions:	All assays should be optimized by the user. Recommended dilutions (if any) may be listed below.
FC:	0.2-1 µg/1x10 ⁶ cells
IF:	User Optimized

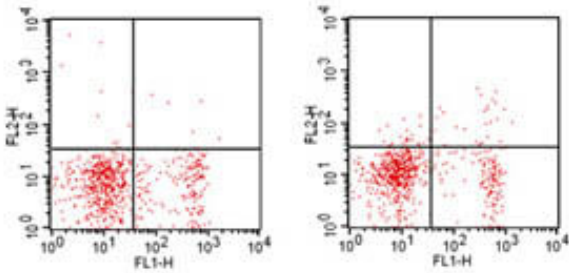
Formulation

Physical State:	Liquid (sterile filtered)
Concentration:	0.2 mg/mL by UV absorbance at 280 nm
Buffer:	0.02 M Potassium Phosphate, 0.15 M Sodium Chloride, pH 7.2
Preservative:	0.09% (w/v) Sodium Azide
Stabilizer:	0.1% Gelatin

Shipping & Handling

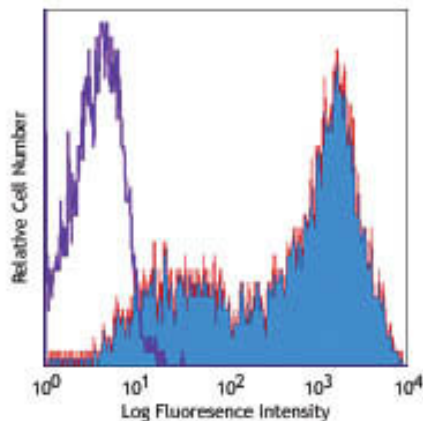
Shipping Condition:	Wet Ice
Storage Condition:	Store vial at 4° C prior to opening. Dilute only prior to immediate use. This product is stable at 4° C as an undiluted liquid. Use subdued lighting during handling and incubation of cells prior to analysis. Store reagent in the dark. DO NOT FREEZE.
Expiration:	Expiration date is six (6) months from date of receipt.

Images



Flow Cytometry

Flow Cytometry of Rat anti-MOUSE CD25 antibody Phycoerythrin conjugated. Cells: BALB/c mouse splenocytes. Stimulation: none. Antibody: (left) isotype control antibody; (right) Phycoerythrin Anti-CD25 rat secondary antibody using 1 µg. Also stained with Fluorescein Anti-CD4 Antibody.



Flow Cytometry

Flow Cytometry of Rat anti-MOUSE CD25 antibody Phycoerythrin conjugated. Cells: BALB/c mouse splenocytes. Stimulation: Con A-stimulated (3 days). Antibody: (PURPLE) rat PE isotype control antibody; (RED) Phycoerythrin Anti-CD25 rat secondary antibody using 1 µg.

Disclaimer

This product is for research use only and is not intended for therapeutic or diagnostic applications. Please contact a technical service representative for more information. All products of animal origin manufactured by Rockland Immunochemicals are derived from starting materials of North American origin. Collection was performed in United States Department of Agriculture (USDA) inspected facilities and all materials have been inspected and certified to be free of disease and suitable for exportation. All properties listed are typical characteristics and are not specifications. All suggestions and data are offered in good faith but without guarantee as conditions and methods of use of our products are beyond our control. All claims must be made within 30 days following the date of delivery. The prospective user must determine the suitability of our materials before adopting them on a commercial scale. Suggested uses of our products are not recommendations to use our products in violation of any patent or as a license under any patent of Rockland Immunochemicals, Inc. If you require a commercial license to use this material and do not have one, then return this material, unopened to: Rockland Inc., P.O. BOX 5199, Limerick, Pennsylvania, USA.