

## Datasheet for 200-502-N87

**CD62L Fluorescein Antibody****Overview**

<b>Description:</b>	Anti-CD62L (RAT) Fluorescein Conjugated Monoclonal Antibody - 200-502-N87
<b>Item No.:</b>	200-502-N87
<b>Size:</b>	500 µg
<b>Applications:</b>	FC
<b>Reactivity:</b>	Mouse
<b>Host Species:</b>	Rat

**Product Details**

**Background:** Anti-CD62L antibody is specific for mouse CD62L, also known as L-Selectin, a cell adhesion molecule which facilitates lymphocyte rolling on activated vascular endothelium and homing to high endothelial venules (HEV) as immune cells transmigrate from blood into peripheral tissues. L-Selectin is a member of a family of Selectin molecules which act together with the integrin family of adhesion molecules to mediate leukocyte-endothelial interactions. L-Selectin is characteristically expressed by neutrophils, and is also found on B cells, monocytes, granulocytes, and at varying levels on naive, effector and memory T cells. It is rapidly shed upon cell activation, releasing into the circulation a soluble form whose biological role is of particular interest in cancer biology research. The MEL-14 antibody may be used as a phenotypic marker for CD62L expression on a variety of immune cell types. Please note that CD62L (L-Selectin) itself is also referred to as MEL-14 in the literature.

**Synonyms:** L-selectin  
CD62 antigen-like family member L  
Leukocyte adhesion molecule 1  
LAM-1  
Leukocyte-endothelial cell adhesion molecule 1  
LECAM1  
Lymph node homing receptor  
Lymphocyte antigen 22  
Ly-22  
Lymphocyte surface MEL-14 antigen  
CD62L  
Sell  
Lnhr, Ly-22, Ly22

**Host Species:** Rat

<b>Conjugate:</b>	Fluorescein (FITC)
<b>Clonality:</b>	Monoclonal
<b>Clone ID:</b>	MEL-14
<b>Format:</b>	IgG2a
<b>F/P Ratio:</b>	2-8

## Target Details

<b>Gene Name:</b>	Sell
<b>Reactivity:</b>	Mouse
<b>Immunogen:</b>	Anti-CD62L Antibody (Monoclonal) was produced by repeated immunizations with CD62L antigen.
<b>Purity/Specificity:</b>	Fluorescein conjugated CD62L Monoclonal Antibody was purified from tissue culture supernatant via affinity chromatography and is directed against mouse CD62L. Cross reactivity with CD62L from other sources has not been tested. Anti-CD62L is conjugated with FITC under optimal conditions and the solution is free of unconjugated FITC.
<b>Relevant Links:</b>	<ul style="list-style-type: none"><li>• <a href="#">UniProtKB - P18337</a></li><li>• <a href="#">NCBI - NP_035476.1</a></li><li>• <a href="#">GeneID - 20343</a></li></ul>

## Application Details

<b>Tested Applications:</b>	FC
<b>Application Note:</b>	Anti-CD62L is tested for FLOW and useful for Immunohistochemistry and Immunoprecipitation using mouse spleen cells, or an appropriate cell type (where indicated). Researchers should determine optimal titers for applications that are not stated.
<b>Assay Dilutions:</b>	All assays should be optimized by the user. Recommended dilutions (if any) may be listed below.
<b>FC:</b>	10 $\mu$ L/10 <sup>6</sup> cells (0.1 $\mu$ g)
<b>IHC:</b>	User Optimized
<b>IP:</b>	User Optimized

## Formulation

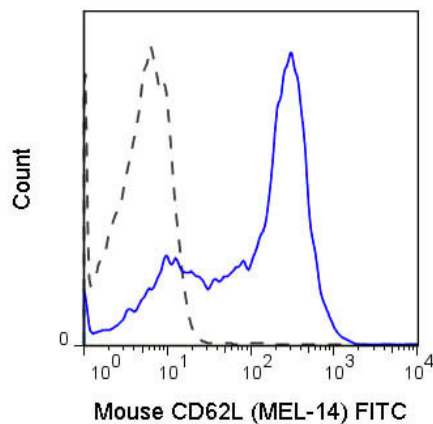
<b>Physical State:</b>	Liquid (sterile filtered)
------------------------	---------------------------

<b>Concentration:</b>	0.5mg/mL by UV absorbance at 280 nm
<b>Buffer:</b>	0.01 M Sodium Phosphate, 0.15 M Sodium Chloride, pH 7.2
<b>Preservative:</b>	0.09% (w/v) Sodium Azide
<b>Stabilizer:</b>	0.1% Gelatin

## Shipping & Handling

<b>Shipping Condition:</b>	Wet Ice
<b>Storage Condition:</b>	Store vial at 4° C prior to opening. This product is stable for several weeks at 4° C as an undiluted liquid. Dilute only prior to immediate use. DO NOT FREEZE. This product is light sensitive.
<b>Expiration:</b>	Expiration date is six (6) months from date of receipt.

## Images



### Flow Cytometry

Flow Cytometry of anti-CD62L Fluorescein Conjugated Monoclonal Antibody. Cells: C57Bl/6 splenocytes. Stimulation: none. Antibody: (Dotted Line) FITC Rat IgG2a isotype control; (Solid Blue Line) Fluorescein Anti-CD62L antibody using 0.25 ug.

## Disclaimer

This product is for research use only and is not intended for therapeutic or diagnostic applications. Please contact a technical service representative for more information. All products of animal origin manufactured by Rockland Immunochemicals are derived from starting materials of North American origin. Collection was performed in United States Department of Agriculture (USDA) inspected facilities and all materials have been inspected and certified to be free of disease and suitable for exportation. All properties listed are typical characteristics and are not specifications. All suggestions and data are offered in good faith but without guarantee as conditions and methods of use of our products are beyond our control. All claims must be made within 30 days following the date of delivery. The prospective user must determine the suitability of our materials before adopting them on a commercial scale. Suggested uses of our products are not recommendations to use our products in violation of any patent or as a license under any patent of Rockland Immunochemicals, Inc. If you require a commercial license to use this material and do not have one, then return this material, unopened to: Rockland Inc., P.O. BOX 5199, Limerick, Pennsylvania, USA.