

Datasheet for 200-502-M70

CD4 Fluorescein Antibody

Overview

Description:	Anti-CD4 (RAT) Monoclonal Antibody Fluorescein Conjugated - 200-502-M70
Item No.:	200-502-M70
Size:	500 µg
Applications:	FC
Reactivity:	Mouse
Host Species:	Rat

Product Details

Background:	CD4 (cluster of differentiation 4) is a glycoprotein expressed on the surface of T helper cells, regulatory T cells, monocytes, macrophages, and dendritic cells. It is a member of the immunoglobulin superfamily. On T cells, it is the co-receptor for the T cell receptor (TCR) and amplifies the signal generated by the TCR by recruiting the tyrosine kinase lck that is essential for activating many molecules involved in the signaling cascade of an activated T cell. It is an important component of the immune system and is also the cellular receptor for HIV-1. It consists of a cytoplasmic tail, one transmembrane region, and four extracellular domains, D1-D4. It maps to 12pter-p12 region of human chromosome.
Synonyms:	T-cell surface glycoprotein CD4, T-cell surface antigen T4/Leu-3, CD4 Antibody, L3T4, T-cell differentiation antigen L3T4
Host Species:	Rat
Conjugate:	Fluorescein (FITC)
Clonality:	Monoclonal
Clone ID:	GK1.5
Format:	IgG2b
F/P Ratio:	2-8

Target Details

Gene Name:	Cd4
-------------------	-----

Reactivity:	Mouse
Immunogen Type:	Other
Immunogen:	Anti-CD4 Antibody (Monoclonal) was produced by repeated immunizations with Mouse CTL clone V4.
Purity/Specificity:	Fluorescein conjugated CD4 Monoclonal Antibody was Protein G Purified and is directed against mouse CD4. Reactivity is observed against mouse CD4. Cross reactivity with CD4 from other sources has not been tested.
Relevant Links:	<ul style="list-style-type: none">• UniProtKB - P06332• NCBI - NP_038516.1• GeneID - 12504

Application Details

Tested Applications:	FC
Application Note:	Anti-CD4 is tested in Flow Cytometry (Cell Surface) and useful for Immunofluorescence. Researchers should determine optimal titers for applications that are not stated.
Assay Dilutions:	All assays should be optimized by the user. Recommended dilutions (if any) may be listed below.
FC:	0.1-1 $\mu\text{g}/10^6$ cells
IF:	User Optimized
Other:	Sufficient to run approximately 500 tests

Formulation

Physical State:	Liquid (sterile filtered)
Concentration:	0.5 mg/mL by UV absorbance at 280 nm
Buffer:	0.01 M Tris Cl, 0.15 M Sodium Chloride, pH 8.0
Preservative:	0.05% (w/v) Sodium Azide
Stabilizer:	0.05% BSA

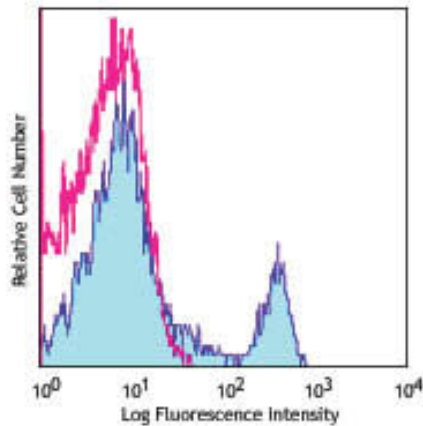
Shipping & Handling

Shipping Condition:	Wet Ice
----------------------------	---------

Storage Condition: Store vial at 4° C prior to opening. This product is stable for several weeks at 4° C as an undiluted liquid. Dilute only prior to immediate use. DO NOT FREEZE. This product is light sensitive.

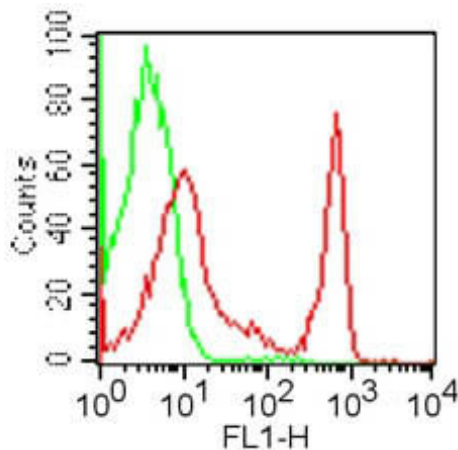
Expiration: Expiration date is six (6) months from date of receipt.

Images



Flow Cytometry

Flow Cytometry of Rat anti-MOUSE CD4 antibody Fluorescein conjugated. Cells: 10^6 C57BL/6 mouse splenocytes. Stimulation: none. Antibody: (PINK) FITC rat IgG2b kappa isotype control antibody; (BLUE) Fluorescein Anti-CD4 rat secondary antibody using 1 μ g.



Flow Cytometry

Cell Surface Flow Cytometry of Rat anti-MOUSE CD4 antibody Fluorescein conjugated. Cells: 10^6 BALB/c mouse splenocytes. Stimulation: none. Antibody: (GREEN) isotype control antibody; (RED) Fluorescein Anti-CD4 rat secondary antibody using 1 μ g.

Disclaimer

This product is for research use only and is not intended for therapeutic or diagnostic applications. Please contact a technical service representative for more information. All products of animal origin manufactured by Rockland Immunochemicals are derived from starting materials of North American origin. Collection was performed in United States Department of Agriculture (USDA) inspected facilities and all materials have been inspected and certified to be free of disease and suitable for exportation. All properties listed are typical characteristics and are not specifications. All suggestions and data are offered in good faith but without guarantee as conditions and methods of use of our products are beyond our control. All claims must be made within 30 days following the date of delivery. The prospective user must determine the suitability of our materials before adopting them on a commercial scale. Suggested uses of our products are not recommendations to use our products in violation of any patent or as a license under any patent of Rockland Immunochemicals, Inc. If you require a commercial license to use this material and do not have one, then return this material, unopened to: Rockland Inc., P.O. BOX 5199, Limerick, Pennsylvania, USA.