

Datasheet for 200-4688-0100

## Ribonuclease A Antibody Biotin Conjugated

### Overview

<b>Description:</b>	Anti-Ribonuclease A (Bovine Pancreas) (RABBIT) Antibody Biotin Conjugated - 200-4688-0100
<b>Item No.:</b>	200-4688-0100
<b>Size:</b>	100 µg
<b>Applications:</b>	ELISA, WB
<b>Reactivity:</b>	Bovine
<b>Host Species:</b>	Rabbit

### Product Details

<b>Background:</b>	Anti-Ribonuclease A recognizes ribonuclease, an endoribonuclease that catalyzes the cleavage of the phosphodiester bond between 5'-ribose of a nucleotide and the phosphate group of a 3'-ribose of a pyrimidine nucleotide. Able to survive acidic and near boiling conditions, RNase A is highly stable. RNase A and its homologs have been demonstrated to have cytotoxic and cytostatic effects.
<b>Synonyms:</b>	rabbit anti-Ribonuclease A Antibody biotin Conjugation, biotin Conjugated rabbit anti-Ribonuclease A Antibody, Pancreatic ribonuclease antibody, Rib 1 antibody, Rib1 antibody, Ribonuclease a family 1 antibody, Ribonuclease pancreatic antibody, Ribonuclease RNase A family 1 antibody, Ribonuclease RNase A family 1 pancreatic antibody
<b>Host Species:</b>	Rabbit
<b>Conjugate:</b>	Biotin
<b>Clonality:</b>	Polyclonal
<b>Format:</b>	IgG

### Target Details

<b>Gene Name:</b>	RNASE1
<b>Reactivity:</b>	Bovine
<b>Immunogen Type:</b>	Native Protein
<b>Immunogen:</b>	Ribonuclease A [Bovine Pancreas]

**Purity/Specificity:** Anti-Ribonuclease A antibody is an IgG fraction antibody purified from monospecific antiserum by a multi-step process which includes delipidation, salt fractionation and ion exchange chromatography followed by extensive dialysis against the buffer stated above. Assay by immunoelectrophoresis resulted in a single precipitin arc against anti-Biotin, anti-Rabbit Serum as well as purified and partially purified Ribonuclease A [Bovine Pancreas]. Cross reactivity against Ribonuclease A from other sources may occur but have not been specifically determined.

**Relevant Links:**

- [UniProtKB - P61823](#)
- [NCBI - AAI49530.1](#)
- [GenelD - 282340](#)

## Application Details

**Tested Applications:** ELISA, WB

**Application Note:** Anti-Ribonuclease A Biotin Conjugated antibody has been tested by ELISA and western blot. This product is assayed against 1.0 ug of Ribonuclease A in a standard capture ELISA using Peroxidase Conjugated Streptavidin #S000-03 and ABTS (2,2'-azino-bis-[3-ethylbenthiiazoline-6-sulfonic acid]) code # ABTS-100 as a substrate for 30 minutes at room temperature. A working dilution of 1:3,000 to 1:13,000 of the reconstitution concentration is suggested for this product.

**Assay Dilutions:** All assays should be optimized by the user. Recommended dilutions (if any) may be listed below.

**ELISA:** 1:150,000

**IP:** 1:100

**WB:** 1:500 - 1:2,500

## Formulation

**Physical State:** Lyophilized

**Concentration:** 1.0 mg/mL by UV absorbance at 280 nm

**Buffer:** 0.02 M Potassium Phosphate, 0.15 M Sodium Chloride, pH 7.2

**Preservative:** 0.01% (w/v) Sodium Azide

**Stabilizer:** 10 mg/mL Bovine Serum Albumin (BSA) - Immunoglobulin and Protease free

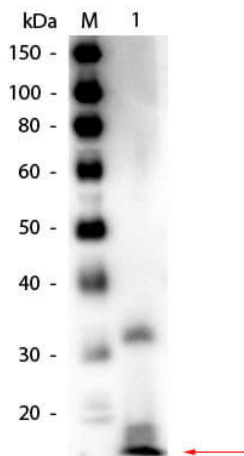
**Reconstitution Volume:** 100 µL

**Reconstitution Buffer:** Restore with deionized water (or equivalent)

## Shipping & Handling

<b>Shipping Condition:</b>	Ambient
<b>Storage Condition:</b>	Store vial at 4° C prior to restoration. For extended storage aliquot contents and freeze at -20° C or below. Avoid cycles of freezing and thawing. Centrifuge product if not completely clear after standing at room temperature. This product is stable for several weeks at 4° C as an undiluted liquid. Dilute only prior to immediate use.
<b>Expiration:</b>	Expiration date is one (1) year from date of receipt.

## Images



### Western Blot

Western Blot of Rabbit anti-Ribonuclease A Antibody Biotin Conjugated. Lane 1: Ribonuclease A (Bovine Pancreas). Load: 50 ng per lane. Primary antibody: Rabbit anti-Ribonuclease A Antibody Biotin Conjugated at 1:1,000 overnight at 4°C. Secondary antibody: HRP streptavidin secondary antibody at 1:40,000 for 30 min at RT. Block: MB-070 for 30 min at RT. Predicted/Observed size: 16.5 kDa, 16.5 kDa for Ribonuclease A. Other band(s): Possible dimerization.

## Disclaimer

This product is for research use only and is not intended for therapeutic or diagnostic applications. Please contact a technical service representative for more information. All products of animal origin manufactured by Rockland Immunochemicals are derived from starting materials of North American origin. Collection was performed in United States Department of Agriculture (USDA) inspected facilities and all materials have been inspected and certified to be free of disease and suitable for exportation. All properties listed are typical characteristics and are not specifications. All suggestions and data are offered in good faith but without guarantee as conditions and methods of use of our products are beyond our control. All claims must be made within 30 days following the date of delivery. The prospective user must determine the suitability of our materials before adopting them on a commercial scale. Suggested uses of our products are not recommendations to use our products in violation of any patent or as a license under any patent of Rockland Immunochemicals, Inc. If you require a commercial license to use this material and do not have one, then return this material, unopened to: Rockland Inc., P.O. BOX 5199, Limerick, Pennsylvania, USA.