

Datasheet for 200-4687

Trypsin Inhibitor Antibody Biotin Conjugated

Overview

Description:	Anti-Trypsin Inhibitor (RABBIT) Antibody Biotin Conjugated (BULK ORDER) - 200-4687
Item No.:	200-4687
Size:	10 mg
Applications:	Dot Blot
Reactivity:	Lima Bean
Host Species:	Rabbit

Product Details

Background:	Soy Bean Trypsin Inhibitor is a serine protease inhibitor, an inhibitor of trypsin, therefore preventing the further breakdown of proteins.
Synonyms:	rabbit anti-trypsin inhibitor antibody biotin conjugation, biotin conjugated rabbit anti-trypsin inhibitor antibody, 25 kDa trypsin inhibitor (Protease inhibitor 15 preproprotein) antibody, CRISP8 antibody, KTi antibody, Kti S antibody, KTi3 antibody, KtiS antibody, Kunitz trypsin inhibitor antibody, Kunitz type trypsin inhibitor A antibody
Host Species:	Rabbit
Conjugate:	Biotin
Clonality:	Polyclonal
Format:	IgG

Target Details

Gene Name:	KTi3
Reactivity:	Lima Bean
Immunogen Type:	Native Protein
Immunogen:	Trypsin Inhibitor [Lima Bean]

Purity/Specificity: Anti-Trypsin Inhibitor antibody is an IgG fraction antibody purified from monospecific antiserum by a multi-step process which includes delipidation, salt fractionation and ion exchange chromatography followed by extensive dialysis against the buffer stated above. Assay by immunoelectrophoresis resulted in a single precipitin arc against anti-Biotin, anti-Rabbit Serum as well as purified and partially purified Trypsin Inhibitor [Lima Bean]. Cross reactivity against Trypsin Inhibitor from other sources is unknown.

Relevant Links:

- [UniProtKB - P01070](#)
- [NCBI - P01070.2](#)
- [GenelD - 547831](#)

Application Details

Tested Applications:	Dot Blot
Application Note:	Anti-Trypsin Inhibitor antibody has been tested by dot blot and assayed against 1.0 ug of Trypsin Inhibitor in a standard capture ELISA using Peroxidase Conjugated Streptavidin #S000-03 and ABTS (2,2'-azino-bis-[3-ethylbenzothiazoline-6-sulfonic acid]) code # ABTS-100 as a substrate for 30 minutes at room temperature. A working dilution of 1:6,000 to 1:26,000 of the reconstitution concentration is suggested for this product.
Assay Dilutions:	All assays should be optimized by the user. Recommended dilutions (if any) may be listed below.
ELISA:	1:5,000 - 1:25,000
WB:	1:500 - 1:3,000

Formulation

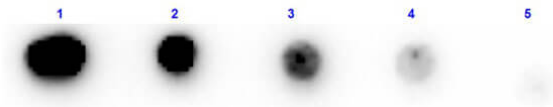
Physical State:	Lyophilized
Concentration:	10.0 mg/mL by UV absorbance at 280 nm
Buffer:	0.02 M Potassium Phosphate, 0.15 M Sodium Chloride, pH 7.2
Preservative:	0.01% (w/v) Sodium Azide
Stabilizer:	10 mg/mL Bovine Serum Albumin (BSA) - Immunoglobulin and Protease free
Reconstitution Volume:	1.0 mL
Reconstitution Buffer:	Restore with deionized water (or equivalent)

Shipping & Handling

Shipping Condition: Ambient

Storage Condition:	Store vial at 4° C prior to restoration. For extended storage aliquot contents and freeze at -20° C or below. Avoid cycles of freezing and thawing. Centrifuge product if not completely clear after standing at room temperature. This product is stable for several weeks at 4° C as an undiluted liquid. Dilute only prior to immediate use.
Expiration:	Expiration date is one (1) year from date of receipt.

Images



Dot Blot

Dot Blot results of Rabbit Anti-Trypsin Inhibitor Antibody Biotin Conjugated. Dots are Trypsin Inhibitor at (1) 100ng, (2) 33.3ng, (3) 11.1ng, (4) 3.70ng, (5) 1.23ng. Blocking: MB-070 for 30 min at RT. Primary Antibody: Rabbit Anti-Trypsin Inhibitor Antibody Biotin at 1µg/mL for 1hr at RT. Secondary Antibody: Streptavidin-HRP (p/n S000-03) at 1:40,000 for 30min at RT. Imaged with BioRad ChemiDoc, Chemi filter.

Disclaimer

This product is for research use only and is not intended for therapeutic or diagnostic applications. Please contact a technical service representative for more information. All products of animal origin manufactured by Rockland Immunochemicals are derived from starting materials of North American origin. Collection was performed in United States Department of Agriculture (USDA) inspected facilities and all materials have been inspected and certified to be free of disease and suitable for exportation. All properties listed are typical characteristics and are not specifications. All suggestions and data are offered in good faith but without guarantee as conditions and methods of use of our products are beyond our control. All claims must be made within 30 days following the date of delivery. The prospective user must determine the suitability of our materials before adopting them on a commercial scale. Suggested uses of our products are not recommendations to use our products in violation of any patent or as a license under any patent of Rockland Immunochemicals, Inc. If you require a commercial license to use this material and do not have one, then return this material, unopened to: Rockland Inc., P.O. BOX 5199, Limerick, Pennsylvania, USA.