

Datasheet for 200-4679

Trypsin Inhibitor Antibody Biotin Conjugated

Overview

Description:	Anti-Trypsin Inhibitor (RABBIT) Antibody Biotin Conjugated (BULK ORDER) - 200-4679
Item No.:	200-4679
Size:	10 mg
Applications:	ELISA, WB
Reactivity:	Soybean
Host Species:	Rabbit

Product Details

Background:	Anti-Trypsin Inhibitor detects trypsin inhibitor from soy bean. Soybean trypsin inhibitor inhibits trypsin and to a lesser extent chymotrypsin and plasmin. Soybean trypsin inhibitor will also inhibit other proteases by a mechanism similar to trypsin. It has inhibitory effects towards plasma kallikrein and coagulation Factor Xa. However, Soybean trypsin inhibitor will not inhibit metalloproteases, tissue-based kallikrein, acid proteases, or thio proteases. Anti-Trypsin Inhibitor Antibody is ideal for investigators involved in Cell Signaling, Biochemistry and Signal Transduction research.
Synonyms:	rabbit anti-trypsin inhibitor antibody biotin conjugation, biotin conjugated rabbit anti-trypsin inhibitor antibody, 25 kDa trypsin inhibitor (Protease inhibitor 15 preproprotein) antibody, CRISP8 antibody, KTi antibody, Kti S antibody, KTi3 antibody, KtiS antibody, Kunitz trypsin inhibitor antibody, Kunitz type trypsin inhibitor A antibody
Host Species:	Rabbit
Conjugate:	Biotin
Clonality:	Polyclonal
Format:	IgG

Target Details

Gene Name:	KTi3
Reactivity:	Soybean
Immunogen Type:	Native Protein

Immunogen:	Anti-Trypsin Inhibitor was produced by repeated immunizations with soy bean trypsin inhibitor.
Purity/Specificity:	Anti-Trypsin Inhibitor antibody is an IgG fraction purified from monospecific antiserum by a multi-step process which includes delipidation, salt fractionation and ion exchange chromatography followed by extensive dialysis against the buffer stated above. Assay by immunoelectrophoresis resulted in a single precipitin arc against anti-Biotin, anti-Rabbit Serum as well as purified and partially purified Trypsin Inhibitor [Soy Bean]. Cross reactivity against Trypsin Inhibitor from other sources is unknown.
Relevant Links:	<ul style="list-style-type: none">• NCBI - P01070.2• UniProtKB - P01070• GenelD - 547831

Application Details

Tested Applications:	ELISA, WB
Application Note:	Anti-Trypsin Inhibitor Biotin Conjugated antibody has been tested by ELISA and western blotting. Researchers should determine optimal titers for applications that are not stated below.
Assay Dilutions:	All assays should be optimized by the user. Recommended dilutions (if any) may be listed below.
ELISA:	1:5,000 - 1:25,000
WB:	1:500 - 1:3,000

Formulation

Physical State:	Lyophilized
Concentration:	10.0 mg/mL by UV absorbance at 280 nm
Buffer:	0.02 M Potassium Phosphate, 0.15 M Sodium Chloride, pH 7.2
Preservative:	0.01% (w/v) Sodium Azide
Stabilizer:	10 mg/mL Bovine Serum Albumin (BSA) - Immunoglobulin and Protease free
Reconstitution Volume:	1.0 mL
Reconstitution Buffer:	Restore with deionized water (or equivalent)

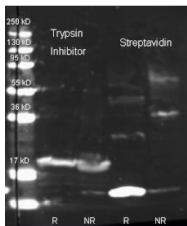
Shipping & Handling

Shipping Condition:	Ambient
----------------------------	---------

Storage Condition: Store vial at 4° C prior to restoration. For extended storage aliquot contents and freeze at -20° C or below. Avoid cycles of freezing and thawing. Centrifuge product if not completely clear after standing at room temperature. This product is stable for several weeks at 4° C as an undiluted liquid. Dilute only prior to immediate use.

Expiration: Expiration date is one (1) year from date of receipt.

Images



Western Blot

Western Blot of Rabbit anti-Soybean Trypsin Inhibitor antibody. Lane 1: Soybean Trypsin Inhibitor Reduced. Lane 2: Soybean Trypsin Inhibitor Non-Reduced. Lane 3: Streptavidin Reduced. Lane 4: Streptavidin Non-reduced. Load: ~1 ug per lane. Primary antibody: 1:1000 dilution of primary antibody (ON 4 C). Secondary antibody: Dylight 649 conjugated Donkey anti rabbit (611-743-127 lot 20831 1:10K 1.5 hr RT. Block: MB-070 overnight at 4°C. Predicted/Observed size: 24 kDa/20kDa for Trypsin, 18.8 kDa/15 kDa for Streptavidin. Other band(s): none.



Western Blot

Western Blot of Rabbit anti-Soybean Trypsin Inhibitor antibody. Lane 1: ~1 ug of purified Soybean Trypsin Inhibitor Reduced. Lane 2: 0.25 ug of purified Soybean Trypsin Inhibitor Reduced. Lane 3: ~1 ug of purified Soybean Trypsin Inhibitor Non-reduced. Lane 4: 0.25 ug of purified Soybean Trypsin Inhibitor Non-reduced. Primary antibody: Soybean Trypsin Inhibitor antibody at 1:5000 for overnight at 4°C. Secondary antibody: Dylight 488 conjugated Streptavidin , 1:5K and Atto 425 conjugated goat anti rabbit, 1:10K at 1.5 hr at RT. Block: MB-070 overnight at 4°C. Predicted/Observed size: 24 kDa, 17 kDa for Trypsin. Other band(s): none.

Disclaimer

This product is for research use only and is not intended for therapeutic or diagnostic applications. Please contact a technical service representative for more information. All products of animal origin manufactured by Rockland Immunochemicals are derived from starting materials of North American origin. Collection was performed in United States Department of Agriculture (USDA) inspected facilities and all materials have been inspected and certified to be free of disease and suitable for exportation. All properties listed are typical characteristics and are not specifications. All suggestions and data are offered in good faith but without guarantee as conditions and methods of use of our products are beyond our control. All claims must be made within 30 days following the date of delivery. The prospective user must determine the suitability of our materials before adopting them on a commercial scale. Suggested uses of our products are not recommendations to use our products in violation of any patent or as a license under any patent of Rockland Immunochemicals, Inc. If you require a commercial license to use this material and do not have one, then return this material, unopened to: Rockland Inc., P.O. BOX 5199, Limerick, Pennsylvania, USA.