

Datasheet for 200-4669

Esterase Antibody Biotin Conjugated

Overview

Description:	Anti-ESTERASE (RABBIT) Antibody Biotin Conjugated (BULK ORDER) - 200-4669
Item No.:	200-4669
Size:	10 mg
Applications:	ELISA, WB
Reactivity:	Pig
Host Species:	Rabbit

Product Details

Background:	Anti-Esterase antibody is involved in the detoxification of xenobiotics, as well as in the activation of ester and amide prodrugs. The antibody is inactive on long-chain triacylglycerols and diacylglycerol, but active towards triacylglycerides composed with short-chain fatty acids from C2 to C6 and monoacylglycerols containing fatty acids from C2 to C12. Esterase hydrolyzes aromate and alkyl esters and vitamin A acetate, the rate of hydrolysis varies due to the hydrolyzing substances. Anti-Esterase antibody member of the type-B carboxylesterase/lipase family.
Synonyms:	rabbit anti-Esterase Antibody biotin Conjugation, biotin conjugated rabbit anti-Esterase Antibody, Liver carboxylesterase, Proline-beta-naphthylamidase, Retinyl ester hydrolase
Host Species:	Rabbit
Conjugate:	Biotin
Clonality:	Polyclonal
Format:	IgG

Target Details

Gene Name:	CES3
Reactivity:	Pig
Immunogen Type:	Native Protein
Immunogen:	Esterase [Porcine Liver]

Purity/Specificity: Anti-Esterase is an IgG fraction antibody purified from monospecific antiserum by a multi-step process which includes delipidation, salt fractionation and ion exchange chromatography followed by extensive dialysis against the buffer stated above. Assay by immunoelectrophoresis resulted in a single precipitin arc against anti-Biotin, anti-Rabbit Serum as well as purified and partially purified Esterase [Porcine Liver]. Cross reactivities against Esterase from other sources may occur but have not been specifically determined.

Relevant Links:

- [UniProtKB - Q29550](#)
- [NCBI - 343791015](#)
- [GeneID - 100626873](#)

Application Details

Tested Applications: ELISA, WB

Application Note: Anti-Esterase Biotin Conjugated Antibody has been tested by ELISA and western blot. This product is assayed against 1.0 ug of Esterase in a standard capture ELISA using Peroxidase Conjugated Streptavidin #S000-03 and ABTS (2,2'-azino-bis-[3-ethylbenzothiazoline-6-sulfonic acid]) code # ABTS-100 as a substrate for 30 minutes at room temperature. A working dilution of 1:4,000 to 1:20,000 of the reconstitution concentration is suggested for this product.

Assay Dilutions: All assays should be optimized by the user. Recommended dilutions (if any) may be listed below.

ELISA: 1:5,000 - 1:25,000

WB: 1:500 - 1:3,000

Formulation

Physical State: Lyophilized

Concentration: 10.0 mg/mL by UV absorbance at 280 nm

Buffer: 0.02 M Potassium Phosphate, 0.15 M Sodium Chloride, pH 7.2

Preservative: 0.01% (w/v) Sodium Azide

Stabilizer: 10 mg/mL Bovine Serum Albumin (BSA) - Immunoglobulin and Protease free

Reconstitution Volume: 1.0 mL

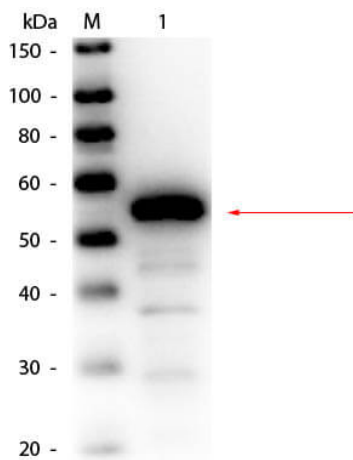
Reconstitution Buffer: Restore with deionized water (or equivalent)

Shipping & Handling

Shipping Condition: Ambient

Storage Condition:	Store vial at 4° C prior to restoration. For extended storage aliquot contents and freeze at -20° C or below. Avoid cycles of freezing and thawing. Centrifuge product if not completely clear after standing at room temperature. This product is stable for several weeks at 4° C as an undiluted liquid. Dilute only prior to immediate use.
Expiration:	Expiration date is one (1) year from date of receipt.

Images



Western Blot

Western Blot of Rabbit anti-Esterase Antibody Biotin Conjugated. Lane 1: Esterase (Porcine Liver). Load: 50 ng per lane. Primary antibody: Rabbit anti-Esterase Antibody Biotin Conjugated at 1:1,000 overnight at 4°C. Secondary antibody: HRP Streptavidin secondary antibody at 1:40,000 for 30 min at RT. Block: MB-070 for 30 min at RT. Predicted/Observed size: 62 kDa, 55 kDa for Esterase.

Disclaimer

This product is for research use only and is not intended for therapeutic or diagnostic applications. Please contact a technical service representative for more information. All products of animal origin manufactured by Rockland Immunochemicals are derived from starting materials of North American origin. Collection was performed in United States Department of Agriculture (USDA) inspected facilities and all materials have been inspected and certified to be free of disease and suitable for exportation. All properties listed are typical characteristics and are not specifications. All suggestions and data are offered in good faith but without guarantee as conditions and methods of use of our products are beyond our control. All claims must be made within 30 days following the date of delivery. The prospective user must determine the suitability of our materials before adopting them on a commercial scale. Suggested uses of our products are not recommendations to use our products in violation of any patent or as a license under any patent of Rockland Immunochemicals, Inc. If you require a commercial license to use this material and do not have one, then return this material, unopened to: Rockland Inc., P.O. BOX 5199, Limerick, Pennsylvania, USA.