

Datasheet for 200-4662-0100

## Mutarotase Antibody Biotin Conjugated

### Overview

<b>Description:</b>	Anti-Mutarotase (Porcine Kidney) (RABBIT) Antibody Biotin Conjugated - 200-4662-0100
<b>Item No.:</b>	200-4662-0100
<b>Size:</b>	100 µg
<b>Applications:</b>	ELISA, WB
<b>Reactivity:</b>	Pig
<b>Host Species:</b>	Rabbit

### Product Details

<b>Background:</b>	Anti-Mutarotase antibody recognizes the protein mutarotase. Mutarotase catalyzes the mutarotation of alpha-aldose to the beta-anomer. Its substrates include D-glucose, L-arabinose, D-xylose, D-galactose, maltose, and lactose.
<b>Synonyms:</b>	rabbit anti-Mutarotase Antibody biotin Conjugation, biotin Conjugated rabbit anti-Mutarotase Antibody, Aldose 1 epimerase antibody, BLOCK25 protein antibody, Galactose mutarotase antibody, GALM antibody
<b>Host Species:</b>	Rabbit
<b>Conjugate:</b>	Biotin
<b>Clonality:</b>	Polyclonal
<b>Format:</b>	IgG

### Target Details

<b>Gene Name:</b>	GALM
<b>Reactivity:</b>	Pig
<b>Immunogen Type:</b>	Native Protein
<b>Immunogen:</b>	Mutarotase [Porcine Kidney]

**Purity/Specificity:** Anti-Mutarotase antibody is an IgG fraction antibody purified from monospecific antiserum by a multi-step process which includes delipidation, salt fractionation and ion exchange chromatography followed by extensive dialysis against the buffer stated above. Assay by immunoelectrophoresis resulted in a single precipitin arc against anti-Biotin, anti-Rabbit Serum as well as purified and partially purified Mutarotase [Porcine Kidney]. Cross reactivity against Mutarotase from other sources is unknown.

**Relevant Links:**

- [UniProtKB - Q9GKX6](#)
- [NCBI - Q9GKX6.1](#)
- [GenelD - 399536](#)

## Application Details

**Tested Applications:** ELISA, WB

**Application Note:** Anti-Mutarotase antibody has been tested in WB and assayed against 1.0 ug of Mutarotase in a standard capture ELISA using Peroxidase Conjugated Streptavidin #S000-03 and ABTS (2,2'-azino-bis-[3-ethylbenzothiazoline-6-sulfonic acid]) code # ABTS-100 as a substrate for 30 minutes at room temperature. A working dilution of 1:2,000 to 1:10,000 of the reconstitution concentration is suggested for this product.

**Assay Dilutions:** All assays should be optimized by the user. Recommended dilutions (if any) may be listed below.

**ELISA:** 1:2,000 - 1:10,000

**IP:** 1:100

**WB:** 1:500 - 1:5,000

## Formulation

**Physical State:** Lyophilized

**Concentration:** 1.0 mg/mL by UV absorbance at 280 nm

**Buffer:** 0.02 M Potassium Phosphate, 0.15 M Sodium Chloride, pH 7.2

**Preservative:** 0.01% (w/v) Sodium Azide

**Stabilizer:** 10 mg/mL Bovine Serum Albumin (BSA) - Immunoglobulin and Protease free

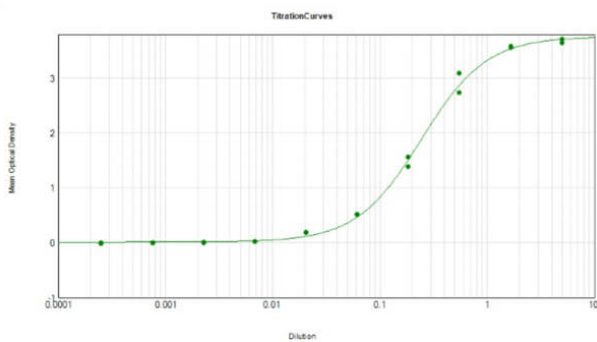
**Reconstitution Volume:** 100 µL

**Reconstitution Buffer:** Restore with deionized water (or equivalent)

## Shipping & Handling

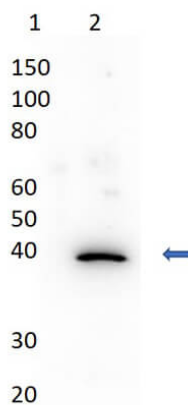
<b>Shipping Condition:</b>	Ambient
<b>Storage Condition:</b>	Store vial at 4° C prior to restoration. For extended storage aliquot contents and freeze at -20° C or below. Avoid cycles of freezing and thawing. Centrifuge product if not completely clear after standing at room temperature. This product is stable for several weeks at 4° C as an undiluted liquid. Dilute only prior to immediate use.
<b>Expiration:</b>	Expiration date is one (1) year from date of receipt.

## Images



### ELISA

ELISA Results of Rabbit Anti-Mutarotase Antibody Biotin Conjugated tested against purified Mutarotase. Each well was coated in duplicate with 1.0 µg of Mutarotase. The working dilution is 4100. The starting dilution of antibody was 5µg/ml and the X-axis represents the Log10 of a 3-fold dilution. This titration is a 4-parameter curve fit where the IC50 is defined as the titer of the antibody. Assay performed using Blocking buffer (p/n MB-076) and TMB substrate (p/n TMBE-1000).



### Western Blot

Western Blot of Rabbit Anti-Mutarotase Antibody Biotin Conjugated. Lane 1: Molecular Weight Marker. Lane 2: Mutarotase [0.05µg]. Primary Antibody: Anti-Mutarotase Antibody Biotin at 1:1000 overnight at 2-8°C. Secondary Antibody: HRP Streptavidin (p/n S000-03) at 1:40,000 for 30 min at RT. Blocking Buffer: BlockOut Buffer (p/n MB-073) for 30 min at RT. Predicted MW: ~38kDa.

## Disclaimer

This product is for research use only and is not intended for therapeutic or diagnostic applications. Please contact a technical service representative for more information. All products of animal origin manufactured by Rockland Immunochemicals are derived from starting materials of North American origin. Collection was performed in United States Department of Agriculture (USDA) inspected facilities and all materials have been inspected and certified to be free of disease and suitable for exportation. All properties listed are typical characteristics and are not specifications. All suggestions and data are offered in good faith but without guarantee as conditions and methods of use of our products are beyond our control. All claims must be made within 30 days following the date of delivery. The prospective user must determine the suitability of our materials before adopting them on a commercial scale. Suggested uses of our products are not recommendations to use our products in violation of any patent or as a license under any patent of Rockland Immunochemicals, Inc. If you require a commercial license to use this material and do not have one, then return this material, unopened to: Rockland Inc., P.O. BOX 5199, Limerick, Pennsylvania, USA.