

Datasheet for 200-4640

Acid Phosphatase Antibody Biotin Conjugated**Overview**

Description:	Anti-Acid Phosphatase (Potato) (RABBIT) Antibody Biotin Conjugated (BULK ORDER) - 200-4640
Item No.:	200-4640
Size:	10 mg
Applications:	Dot Blot
Reactivity:	Acid Phosphatase (Potato)
Host Species:	Rabbit

Product Details

Background:	Acid Phosphatase is an enzyme which facilitates hydrolysis of alcohol groups on phosphate esters. Anti-Acid Phosphatase antibodies are ideal for investigators interested in Cancer, Enzyme, Cell Biology, and Cell Cycle Research.
Synonyms:	rabbit anti-Acid Phosphatase Antibody biotin Conjugation, biotin conjugated rabbit anti-Acid Phosphatase Antibody, Acid phosphatase 1 soluble antibody, PAP3, Acid phosphatase of erythrocyte antibody, Adipocyte acid phosphatase antibody, Cytoplasmic phosphotyrosyl protein phosphatase antibody, HAAP antibody
Host Species:	Rabbit
Conjugate:	Biotin
Clonality:	Polyclonal
Format:	IgG

Target Details

Gene Name:	PAP3
Reactivity:	Acid Phosphatase (Potato)
Immunogen Type:	Native Protein
Immunogen:	Acid Phosphatase [Potato]

Purity/Specificity: Acid Phosphatase is an IgG fraction antibody purified from monospecific antiserum by a multi-step process which includes delipidation, salt fractionation and ion exchange chromatography followed by extensive dialysis against the buffer stated above. Assay by immunoelectrophoresis resulted in a single precipitin arc against anti-Biotin, anti-Rabbit Serum as well as purified and partially purified Acid Phosphatase [Potato]. Cross reactivity against Acid Phosphatase from other sources is unknown.

Relevant Links:

- [UniProtKB - Q6J5M8](#)
- [NCBI - AAT37528.1](#)

Application Details

Tested Applications: Dot Blot

Application Note: Anti-Acid Phosphatase Biotin Conjugated Antibody has been tested by dot blot and is suitable to be assayed against 1.0 ug of Acid Phosphatase in a standard capture ELISA using Peroxidase Conjugated Streptavidin #S000-03 and ABTS (2,2'-azino-bis-[3-ethylbenthiiazoline-6-sulfonic acid]) code # ABTS-100 as a substrate for 30 minutes at room temperature. A working dilution of 1:8,000 to 1:32,000 of the reconstitution concentration is suggested for this product.

Assay Dilutions: All assays should be optimized by the user. Recommended dilutions (if any) may be listed below.

ELISA: 1:4,000 - 1:20,000

WB: 1:500 - 1:2,000

Formulation

Physical State: Lyophilized

Concentration: 10.0 mg/mL by UV absorbance at 280 nm

Buffer: 0.02 M Potassium Phosphate, 0.15 M Sodium Chloride, pH 7.2

Preservative: 0.01% (w/v) Sodium Azide

Stabilizer: 10 mg/mL Bovine Serum Albumin (BSA) - Immunoglobulin and Protease free

Reconstitution Volume: 1.0 mL

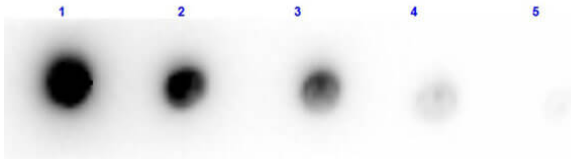
Reconstitution Buffer: Restore with deionized water (or equivalent)

Shipping & Handling

Shipping Condition: Ambient

Storage Condition:	Store vial at 4° C prior to restoration. For extended storage aliquot contents and freeze at -20° C or below. Avoid cycles of freezing and thawing. Centrifuge product if not completely clear after standing at room temperature. This product is stable for several weeks at 4° C as an undiluted liquid. Dilute only prior to immediate use.
Expiration:	Expiration date is one (1) year from date of receipt.

Images



Dot Blot

Dot Blot results of Rabbit Anti-Acid Phosphatase Biotin Conjugated. Antigen: Acid Phosphatase. Blot loaded at 3 fold dilution: 1. 100ng, 2. 33.3ng, 3. 11.1ng, 4. 3.70ng, 5. 1.23ng. Blocking: MB-070 Buffer for 30 minutes at RT. Primary Antibody: Rabbit Anti-Acid Phosphatase Biotin 10µg/mL for 1hr at RT. Secondary Antibody: Streptavidin-HRP (p/n S000-03) at 1:40,000 for 30min at RT. Imaging System ChemiDoc, Filter used: Chemi.

Disclaimer

This product is for research use only and is not intended for therapeutic or diagnostic applications. Please contact a technical service representative for more information. All products of animal origin manufactured by Rockland Immunochemicals are derived from starting materials of North American origin. Collection was performed in United States Department of Agriculture (USDA) inspected facilities and all materials have been inspected and certified to be free of disease and suitable for exportation. All properties listed are typical characteristics and are not specifications. All suggestions and data are offered in good faith but without guarantee as conditions and methods of use of our products are beyond our control. All claims must be made within 30 days following the date of delivery. The prospective user must determine the suitability of our materials before adopting them on a commercial scale. Suggested uses of our products are not recommendations to use our products in violation of any patent or as a license under any patent of Rockland Immunochemicals, Inc. If you require a commercial license to use this material and do not have one, then return this material, unopened to: Rockland Inc., P.O. BOX 5199, Limerick, Pennsylvania, USA.