

Datasheet for 200-4636S

Beta Galactosidase Antibody Biotin Conjugated

Overview

Description:	Anti-Beta Galactosidase (E. coli) (RABBIT) Antibody Biotin Conjugated - 200-4636S
Item No.:	200-4636S
Size:	25 µL
Applications:	WB
Reactivity:	b-GAL
Host Species:	Rabbit

Product Details

Background:	Anti Beta Galactosidase Antibody recognizes the enzyme beta galactosidase, or β -galactosidase, that is a component of assays used frequently in genetics, molecular biology (see X-gal) for a blue white screen, and other life sciences. IPTG induces production of β -galactosidase by binding and inhibiting the lac repressor. Since it is highly expressed and accumulated in lysosomes in senescent cells, it is used as a senescence biomarker both in vivo and in vitro in qualitative and quantitative assays, despite its limitations.
Synonyms:	rabbit anti Beta Galactosidase Antibody Biotin Conjugated
Host Species:	Rabbit
Conjugate:	Biotin
Clonality:	Polyclonal
Format:	IgG

Target Details

Reactivity:	b-GAL
Immunogen Type:	Native Protein
Immunogen:	Beta Galactosidase (E.coli)

Purity/Specificity: Anti-BETA GALACTOSIDASE Antibody, Biotin Conjugated, is an IgG fraction antibody purified from monospecific antiserum by a multi-step process which includes delipidation, salt fractionation and ion exchange chromatography followed by extensive dialysis against the buffer stated above. Assay by immunoelectrophoresis resulted in a single precipitin arc against anti-Biotin, anti-Rabbit Serum as well as purified and partially purified beta-Galactosidase [E.coli]. Cross reactivity against β -Galactosidase from other sources may occur but have not been specifically determined.

Relevant Links:

- [200-4636 SDS](#)
- [NCBI - NP_414878.1](#)
- [UniProtKB - P00722](#)

Application Details

Tested Applications: WB

Application Note: Anti-Beta Galactosidase Biotin Conjugated Antibody has been tested by Western blot and is suitable for ELISA, immunohistochemistry, immunomicroscopy as well as other antibody based assays using streptavidin or avidin conjugates requiring lot-to-lot consistency. The antibody should recognize both frozen tissue sections, paraffin embedded tissue and 4% paraformaldehyde fixed tissue for most immunohistochemical analysis. A 1:5,000 dilution has been reported to be successful for staining by immunoblot of beta-galactosidase fusion proteins after transfer using a semi-dry transfer apparatus. Optimal titers for other applications should be determined by the researcher.

Assay Dilutions: All assays should be optimized by the user. Recommended dilutions (if any) may be listed below.

ELISA: 1:10,000 - 1:50,000

IHC: User Optimized

WB: 1:2,000 - 1:10,000

Formulation

Physical State: Liquid (sterile filtered)

Concentration: 1.0 mg/mL by UV absorbance at 280 nm

Buffer: 0.02 M Potassium Phosphate, 0.15 M Sodium Chloride, pH 7.2

Preservative: 0.01% (w/v) Sodium Azide

Stabilizer: 10 mg/mL Bovine Serum Albumin (BSA) - Immunoglobulin and Protease free

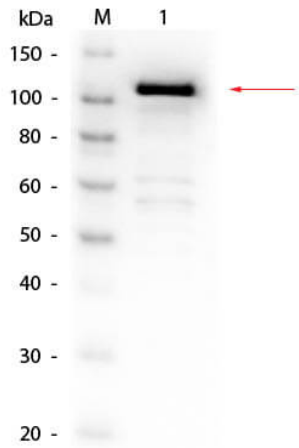
Shipping & Handling

Shipping Condition: Dry Ice

Storage Condition: Store vial at -20° C or below prior to opening. This vial contains a relatively low volume of reagent (25 µL). To minimize loss of volume dilute 1:10 by adding 225 µL of the buffer stated above directly to the vial. Recap, mix thoroughly and briefly centrifuge to collect the volume at the bottom of the vial. Use this intermediate dilution when calculating final dilutions as recommended below. Store the vial at -20°C or below after dilution. Avoid cycles of freezing and thawing.

Expiration: Expiration date is one (1) year from date of receipt.

Images



Western Blot

Western Blot of Rabbit anti-Beta Galactosidase (E. Coli) Antibody Biotin Conjugated. Lane 1: Beta Galactosidase. Load: 50 ng per lane. Primary antibody: Beta Galactosidase (E. Coli) Antibody Biotin Conjugated at 1:1,000 overnight at 4°C. Secondary antibody: HRP Streptavidin secondary antibody at 1:40,000 for 30 min at RT. Block: MB-070 for 30 min at RT. Predicted/Observed size: 116 kDa, 116 kDa for Beta Galactosidase.

Disclaimer

This product is for research use only and is not intended for therapeutic or diagnostic applications. Please contact a technical service representative for more information. All products of animal origin manufactured by Rockland Immunochemicals are derived from starting materials of North American origin. Collection was performed in United States Department of Agriculture (USDA) inspected facilities and all materials have been inspected and certified to be free of disease and suitable for exportation. All properties listed are typical characteristics and are not specifications. All suggestions and data are offered in good faith but without guarantee as conditions and methods of use of our products are beyond our control. All claims must be made within 30 days following the date of delivery. The prospective user must determine the suitability of our materials before adopting them on a commercial scale. Suggested uses of our products are not recommendations to use our products in violation of any patent or as a license under any patent of Rockland Immunochemicals, Inc. If you require a commercial license to use this material and do not have one, then return this material, unopened to: Rockland Inc., P.O. BOX 5199, Limerick, Pennsylvania, USA.