

Datasheet for 200-4636

Beta Galactosidase Antibody Biotin Conjugated

Overview

| | |
|----------------------|---|
| Description: | Anti-Beta Galactosidase (E. coli) (RABBIT) Antibody Biotin Conjugated (BULK ORDER) - 200-4636 |
| Item No.: | 200-4636 |
| Size: | 10 mg |
| Applications: | WB |
| Reactivity: | b-GAL |
| Host Species: | Rabbit |

Product Details

| | |
|----------------------|---|
| Background: | Anti Beta Galactosidase Antibody recognizes the enzyme beta galactosidase, or β -galactosidase, that is a component of assays used frequently in genetics, molecular biology (see X-gal) for a blue white screen, and other life sciences. IPTG induces production of β -galactosidase by binding and inhibiting the lac repressor. Since it is highly expressed and accumulated in lysosomes in senescent cells, it is used as a senescence biomarker both in vivo and in vitro in qualitative and quantitative assays, despite its limitations. |
| Synonyms: | rabbit anti Beta Galactosidase Antibody Biotin Conjugated |
| Host Species: | Rabbit |
| Conjugate: | Biotin |
| Clonality: | Polyclonal |
| Format: | IgG |

Target Details

| | |
|------------------------|-----------------------------|
| Reactivity: | b-GAL |
| Immunogen Type: | Native Protein |
| Immunogen: | Beta Galactosidase (E.coli) |

Purity/Specificity: Anti-BETA GALACTOSIDASE Antibody, Biotin Conjugated, is an IgG fraction antibody purified from monospecific antiserum by a multi-step process which includes delipidation, salt fractionation and ion exchange chromatography followed by extensive dialysis against the buffer stated above. Assay by immunoelectrophoresis resulted in a single precipitin arc against anti-Biotin, anti-Rabbit Serum as well as purified and partially purified beta-Galactosidase [E.coli]. Cross reactivity against β -Galactosidase from other sources may occur but have not been specifically determined.

Relevant Links:

- [200-4636 SDS](#)
- [NCBI - NP_414878.1](#)
- [UniProtKB - P00722](#)

Application Details

Tested Applications: WB

Application Note: Anti-Beta Galactosidase Biotin Conjugated Antibody has been tested by Western blot and is suitable for ELISA, immunohistochemistry, immunomicroscopy as well as other antibody based assays using streptavidin or avidin conjugates requiring lot-to-lot consistency. The antibody should recognize both frozen tissue sections, paraffin embedded tissue and 4% paraformaldehyde fixed tissue for most immunohistochemical analysis. A 1:5,000 dilution has been reported to be successful for staining by immunoblot of beta-galactosidase fusion proteins after transfer using a semi-dry transfer apparatus. Optimal titers for other applications should be determined by the researcher.

Assay Dilutions: All assays should be optimized by the user. Recommended dilutions (if any) may be listed below.

ELISA: 1:10,000 - 1:50,000

IHC: User Optimized

WB: 1:2,000 - 1:10,000

Formulation

Physical State: Lyophilized

Concentration: 10.0 mg/mL by UV absorbance at 280 nm

Buffer: 0.02 M Potassium Phosphate, 0.15 M Sodium Chloride, pH 7.2

Preservative: 0.01% (w/v) Sodium Azide

Stabilizer: 10 mg/mL Bovine Serum Albumin (BSA) - Immunoglobulin and Protease free

Reconstitution Volume: 1.0 mL

Reconstitution Buffer: Restore with deionized water (or equivalent)

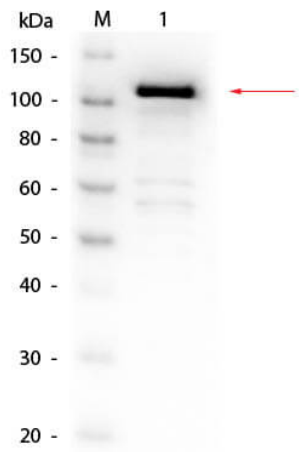
Shipping & Handling

Shipping Condition: Ambient

Storage Condition: Store vial at 4° C prior to restoration. For extended storage aliquot contents and freeze at -20° C or below. Avoid cycles of freezing and thawing. Centrifuge product if not completely clear after standing at room temperature. This product is stable for several weeks at 4° C as an undiluted liquid. Dilute only prior to immediate use.

Expiration: Expiration date is one (1) year from date of receipt.

Images



Western Blot

Western Blot of Rabbit anti-Beta Galactosidase (E. Coli) Antibody Biotin Conjugated. Lane 1: Beta Galactosidase. Load: 50 ng per lane. Primary antibody: Beta Galactosidase (E. Coli) Antibody Biotin Conjugated at 1:1,000 overnight at 4°C. Secondary antibody: HRP Streptavidin secondary antibody at 1:40,000 for 30 min at RT. Block: MB-070 for 30 min at RT. Predicted/Observed size: 116 kDa, 116 kDa for Beta Galactosidase.

Disclaimer

This product is for research use only and is not intended for therapeutic or diagnostic applications. Please contact a technical service representative for more information. All products of animal origin manufactured by Rockland Immunochemicals are derived from starting materials of North American origin. Collection was performed in United States Department of Agriculture (USDA) inspected facilities and all materials have been inspected and certified to be free of disease and suitable for exportation. All properties listed are typical characteristics and are not specifications. All suggestions and data are offered in good faith but without guarantee as conditions and methods of use of our products are beyond our control. All claims must be made within 30 days following the date of delivery. The prospective user must determine the suitability of our materials before adopting them on a commercial scale. Suggested uses of our products are not recommendations to use our products in violation of any patent or as a license under any patent of Rockland Immunochemicals, Inc. If you require a commercial license to use this material and do not have one, then return this material, unopened to: Rockland Inc., P.O. BOX 5199, Limerick, Pennsylvania, USA.