

## Datasheet for 200-4633S

## Ovalbumin Antibody Biotin Conjugated

### Overview

<b>Description:</b>	Anti-Ovalbumin (Hen Egg White) (RABBIT) Antibody Biotin Conjugated - 200-4633S
<b>Item No.:</b>	200-4633S
<b>Size:</b>	25 µL
<b>Applications:</b>	Dot Blot, ELISA, WB
<b>Reactivity:</b>	Chicken
<b>Host Species:</b>	Rabbit

### Product Details

<b>Background:</b>	Ovalbumin Antibody Biotin Conjugated is specific for ovalbumin. Ovalbumin (abbreviated OVA) is the main protein found in egg white, making up 60-65% of the total protein. Ovalbumin displays sequence and three-dimensional homology to the serpin superfamily. The function of ovalbumin is unknown, although it is presumed to be a storage protein or carrier protein.
<b>Synonyms:</b>	rabbit anti-Ovalbumin Antibody biotin Conjugation, biotin conjugated rabbit anti-Ovalbumin antibody, Egg albumin antibody, Plakalbumin, Allergen Gal d II, Allergen=Gal d 2, Hen Egg White
<b>Host Species:</b>	Rabbit
<b>Conjugate:</b>	Biotin
<b>Clonality:</b>	Polyclonal
<b>Format:</b>	IgG
<b>F/P Ratio:</b>	10-20

### Target Details

<b>Gene Name:</b>	SERPINB14
<b>Reactivity:</b>	Chicken
<b>Immunogen Type:</b>	Native Protein
<b>Immunogen:</b>	Ovalbumin [Hen Egg White]

**Purity/Specificity:** Anti-Ovalbumin Antibody Biotin Conjugated is an IgG fraction antibody purified from monospecific antiserum by a multi-step process which includes delipidation, salt fractionation and ion exchange chromatography followed by extensive dialysis against the buffer stated above. Assay by immunoelectrophoresis resulted in a single precipitin arc against anti-Biotin, anti-Rabbit Serum as well as purified and partially purified Ovalbumin [Hen Egg White]. Cross reactivities against Ovalbumin from other sources may occur but have not been specifically determined.

**Relevant Links:**

- [200-4633 SDS](#)
- [UniProtKB - P01012](#)
- [NCBI - P01012.2](#)
- [GenelD - 396058](#)

## Application Details

<b>Tested Applications:</b>	Dot Blot, ELISA, WB
<b>Application Note:</b>	Anti-Ovalbumin Antibody Biotin Conjugated is tested by ELISA, dot blot, and western blotting. In western blots anti-ovalbumin detects a single band of the expected apparent molecular weight. Researchers should determine optimal titers for applications that are not stated below.
<b>Assay Dilutions:</b>	All assays should be optimized by the user. Recommended dilutions (if any) may be listed below.
<b>ELISA:</b>	1:5,000 - 1:25,000
<b>IP:</b>	1:100
<b>WB:</b>	1:1,000 - 1:5,000

## Formulation

<b>Physical State:</b>	Liquid (sterile filtered)
<b>Concentration:</b>	1.0 mg/mL by UV absorbance at 280 nm
<b>Buffer:</b>	0.02 M Potassium Phosphate, 0.15 M Sodium Chloride, pH 7.2
<b>Preservative:</b>	0.01% (w/v) Sodium Azide
<b>Stabilizer:</b>	10 mg/mL Bovine Serum Albumin (BSA) - Immunoglobulin and Protease free

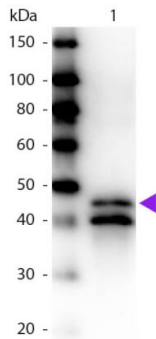
## Shipping & Handling

**Shipping Condition:** Dry Ice

**Storage Condition:** Store vial at -20° C or below prior to opening. This vial contains a relatively low volume of reagent (25 µL). To minimize loss of volume dilute 1:10 by adding 225 µL of the buffer stated above directly to the vial. Recap, mix thoroughly and briefly centrifuge to collect the volume at the bottom of the vial. Use this intermediate dilution when calculating final dilutions as recommended below. Store the vial at -20°C or below after dilution. Avoid cycles of freezing and thawing.

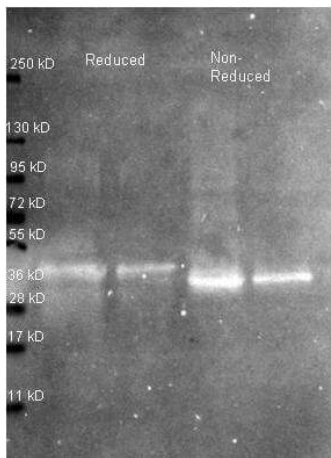
**Expiration:** Expiration date is one (1) year from date of receipt.

## Images



### Western Blot

Western blot of Biotin conjugated Rabbit Anti-Ovalbumin primary antibody. Lane 1: Ovalbumin. Lane 2: None. Load: 50 ng per lane. Primary antibody: Ovalbumin biotin conjugated primary antibody at 1:1,000 for 60 min at RT. Secondary antibody: Peroxidase streptavidin secondary antibody at 1:40,000 for 30 min at RT. Blocking: MB-070 for 30 min at RT. Predicted/Observed size: 45 kDa, 45 kDa for Ovalbumin. Other band(s): Ovalbumin splice variants and isoforms.



### Western Blot

Western Blot of Rabbit anti-Ovalbumin antibody. Lane 1: ~1 µg Ovalbumin protein reduced. Lane 2: 0.25 µg Ovalbumin protein reduced. Lane 3: ~1 µg Ovalbumin protein non-reduced. Lane 4: 0.25 µg Ovalbumin protein non-reduced. Primary antibody: Ovalbumin antibody at 1:5000 for overnight at 4°C. Secondary antibody: Atto 425 conjugated goat anti rabbit secondary antibody at 1:10,000 for 1.5 hr at RT. Block: MB-070 buffer overnight at 4°C. Predicted/Observed size: 42.9 kDa, ~36 kDa for ovalbumin. Other band(s): none.

## Disclaimer

This product is for research use only and is not intended for therapeutic or diagnostic applications. Please contact a technical service representative for more information. All products of animal origin manufactured by Rockland Immunochemicals are derived from starting materials of North American origin. Collection was performed in United States Department of Agriculture (USDA) inspected facilities and all materials have been inspected and certified to be free of disease and suitable for exportation. All properties listed are typical characteristics and are not specifications. All suggestions and data are offered in good faith but without guarantee as conditions and methods of use of our products are beyond our control. All claims must be made within 30 days following the date of delivery. The prospective user must determine the suitability of our materials before adopting them on a commercial scale. Suggested uses of our products are not recommendations to use our products in violation of any patent or as a license under any patent of Rockland Immunochemicals, Inc. If you require a commercial license to use this material and do not have one, then return this material, unopened to: Rockland Inc., P.O. BOX 5199, Limerick, Pennsylvania, USA.