

Datasheet for 200-4388S

Ribonuclease A Antibody Peroxidase Conjugated

Overview

| | |
|----------------------|---|
| Description: | Anti-Ribonuclease A (Bovine Pancreas) (RABBIT) Antibody Peroxidase Conjugated - 200-4388S |
| Item No.: | 200-4388S |
| Size: | 25 µL |
| Applications: | ELISA, WB |
| Reactivity: | Bovine |
| Host Species: | Rabbit |

Product Details

| | |
|----------------------|--|
| Background: | Ribonuclease A is a pancreatic ribonuclease that cleaves single-stranded RNA. Bovine pancreatic RNase A is one of the classic model systems of protein science. RNase A cleaves specifically after pyrimidine nucleotides. It can be inhibited by ribonuclease inhibitor protein, by heavy metal ions, and by uridine-vanadate complexes. RNase A, and to a greater extent its oligomers and some homologs, have cytotoxic and cytostatic effects, particularly on cancer cells. |
| Synonyms: | rabbit anti-Ribonuclease A Antibody Peroxidase Conjugation, HRP Conjugated rabbit anti-Ribonuclease A Antibody, Pancreatic ribonuclease antibody, Rib 1 antibody, Rib1 antibody, Ribonuclease a family 1 antibody, Ribonuclease pancreatic antibody, Ribonuclease RNase A family 1 antibody, Ribonuclease RNase A family 1 pancreatic antibody |
| Host Species: | Rabbit |
| Conjugate: | Peroxidase (HRP) |
| Clonality: | Polyclonal |
| Format: | IgG |

Target Details

| | |
|------------------------|----------------------------------|
| Gene Name: | RNASE1 |
| Reactivity: | Bovine |
| Immunogen Type: | Native Protein |
| Immunogen: | Ribonuclease A [Bovine Pancreas] |

Purity/Specificity: Ribonuclease A is an IgG fraction antibody purified from monospecific antiserum by a multi-step process which includes delipidation, salt fractionation and ion exchange chromatography followed by extensive dialysis against the buffer stated above. Assay by immunoelectrophoresis resulted in a single precipitin arc against anti-Peroxidase, anti-Rabbit Serum as well as purified and partially purified Ribonuclease A [Bovine Pancreas]. Cross reactivity against Ribonuclease A from other tissues and species may occur but have not been specifically determined.

Relevant Links:

- [UniProtKB - P61823](#)
- [NCBI - AAI49530.1](#)
- [GeneID - 282340](#)

Application Details

Tested Applications: ELISA, WB

Application Note: Anti-Ribonuclease A Peroxidase Conjugated Antibody has been tested by ELISA and western blot. This product is assayed against 1.0 ug of Ribonuclease A [Bovine Pancreas] in a standard capture ELISA using ABTS (2,2'-azino-bis-[3-ethylbenzothiazoline-6-sulfonic acid]) code # ABTS-100 as a substrate for 30 minutes at room temperature. A working dilution of 1:1,000 to 1:5,000 of the reconstitution concentration is suggested for this product.

Assay Dilutions: All assays should be optimized by the user. Recommended dilutions (if any) may be listed below.

ELISA: 1:10,000 - 1:40,000

IP: 1:100

WB: 1:500 - 1:2,500

Formulation

Physical State: Liquid (sterile filtered)

Concentration: 1.0 mg/mL by UV absorbance at 280 nm

Buffer: 0.02 M Potassium Phosphate, 0.15 M Sodium Chloride, pH 7.2

Preservative: 0.01% (w/v) Gentamicin Sulfate. Do NOT add Sodium Azide!

Stabilizer: 10 mg/mL Bovine Serum Albumin (BSA) - Immunoglobulin and Protease free

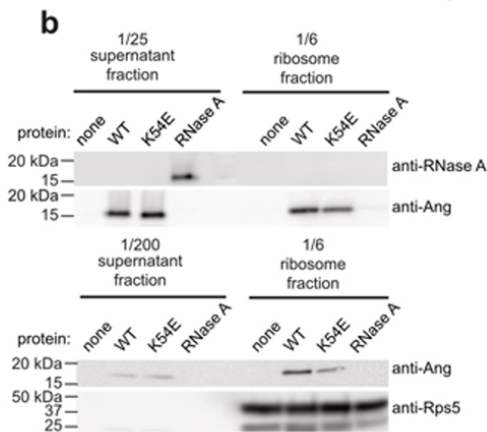
Shipping & Handling

Shipping Condition: Dry Ice

Storage Condition: Store vial at -20° C or below prior to opening. This vial contains a relatively low volume of reagent (25 µL). To minimize loss of volume dilute 1:10 by adding 225 µL of the buffer stated above directly to the vial. Recap, mix thoroughly and briefly centrifuge to collect the volume at the bottom of the vial. Use this intermediate dilution when calculating final dilutions as recommended below. Store the vial at -20°C or below after dilution. Avoid cycles of freezing and thawing.

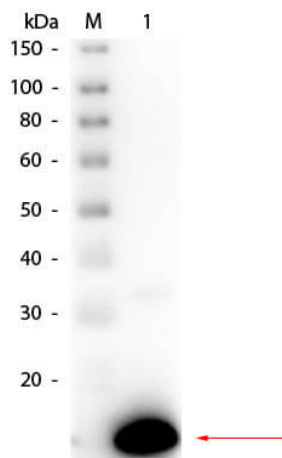
Expiration: Expiration date is one (1) year from date of receipt.

Images



Western Blot

(b) 200 nM WT refolded angiogenin co-pellets with purified ribosomes more efficiently than angiogenin(K54E). Bovine pancreatic RNase A does not co-pellet with ribosome under these conditions (n = 1). Extended Data Fig. 3. Full images in Supplementary Material. PMID: 38718836



Western Blot

Western Blot of Rabbit anti-Ribonuclease A Antibody Peroxidase Conjugated. Lane 1: Ribonuclease A (Bovine Pancreas). Load: 50 ng per lane. Primary antibody: Rabbit anti-Ribonuclease A Antibody Peroxidase Conjugated at 1:1,000 overnight at 4°C. Secondary antibody: n/a. Block: MB-070 for 30 min at RT. Predicted/Observed size: 16.5 kDa, 16.5 kDa for Ribonuclease A.

References

- Loveland AB et al. Structural mechanism of angiogenin activation by the ribosome. *Nature*. (2024)

Disclaimer

This product is for research use only and is not intended for therapeutic or diagnostic applications. Please contact a technical service representative for more information. All products of animal origin manufactured by Rockland Immunochemicals are derived from starting materials of North American origin. Collection was performed in United States Department of Agriculture (USDA) inspected facilities and all materials have been inspected and certified to be free of disease and suitable for exportation. All properties listed are typical characteristics and are not specifications. All suggestions and data are offered in good faith but without guarantee as conditions and methods of use of our products are beyond our control. All claims must be made within 30 days following the date of delivery. The prospective user must determine the suitability of our materials before adopting them on a commercial scale. Suggested uses of our products are not recommendations to use our products in violation of any patent or as a license under any patent of Rockland Immunochemicals, Inc. If you require a commercial license to use this material and do not have one, then return this material, unopened to: Rockland Inc., P.O. BOX 5199, Limerick, Pennsylvania, USA.