

Datasheet for 200-4379-0100

## Trypsin Inhibitor Antibody Peroxidase Conjugated

### Overview

<b>Description:</b>	Anti-Trypsin Inhibitor (RABBIT) Antibody Peroxidase Conjugated - 200-4379-0100
<b>Item No.:</b>	200-4379-0100
<b>Size:</b>	100 µg
<b>Applications:</b>	ELISA, WB
<b>Reactivity:</b>	Soybean
<b>Host Species:</b>	Rabbit

### Product Details

<b>Background:</b>	Anti-Trypsin Inhibitor detects trypsin inhibitor from soy bean. Soybean trypsin inhibitor inhibits trypsin and to a lesser extent chymotrypsin and plasmin. Soybean trypsin inhibitor will also inhibit other proteases by a mechanism similar to trypsin. It has inhibitory effects towards plasma kallikrein and coagulation Factor Xa. However, Soybean trypsin inhibitor will not inhibit metalloproteases, tissue-based kallikrein, acid proteases, or thio proteases. Anti-Trypsin Inhibitor Antibody is ideal for investigators involved in Cell Signaling, Biochemistry and Signal Transduction research.
<b>Synonyms:</b>	rabbit anti-trypsin inhibitor antibody HRP conjugation, peroxidase conjugated rabbit anti-trypsin inhibitor antibody, 25 kDa trypsin inhibitor (Protease inhibitor 15 preproprotein) antibody, CRISP8 antibody, KTi antibody, Kti S antibody, KTi3 antibody, KtiS antibody, Kunitz trypsin inhibitor antibody, Kunitz type trypsin inhibitor A antibody
<b>Host Species:</b>	Rabbit
<b>Conjugate:</b>	Peroxidase (HRP)
<b>Clonality:</b>	Polyclonal
<b>Format:</b>	IgG

### Target Details

<b>Gene Name:</b>	KTi3
<b>Reactivity:</b>	Soybean
<b>Immunogen Type:</b>	Native Protein

<b>Immunogen:</b>	Anti-Trypsin Inhibitor was produced by repeated immunizations with soy bean trypsin inhibitor.
<b>Purity/Specificity:</b>	Anti-Trypsin Inhibitor antibody is an IgG fraction purified from monospecific antiserum by a multi-step process which includes delipidation, salt fractionation and ion exchange chromatography followed by extensive dialysis against the buffer stated above. Assay by immunoelectrophoresis resulted in a single precipitin arc against anti-Peroxidase and anti-Rabbit Serum as well as purified and partially purified Trypsin Inhibitor (Soy Bean). Cross-reactivity against Trypsin Inhibitor from other tissues and species is unknown.
<b>Relevant Links:</b>	<ul style="list-style-type: none"><li>• <a href="#">UniProtKB - P01070</a></li><li>• <a href="#">NCBI - P01070.2</a></li><li>• <a href="#">GenelD - 547831</a></li></ul>

## Application Details

<b>Tested Applications:</b>	ELISA, WB
<b>Application Note:</b>	Anti-Trypsin Inhibitor peroxidase conjugated antibody has been tested by western blotting and ELISA and is suitable for IHC. Researchers should determine optimal titers for applications that are not stated below.
<b>Assay Dilutions:</b>	All assays should be optimized by the user. Recommended dilutions (if any) may be listed below.
<b>ELISA:</b>	1:2,000 - 1:10,000
<b>IHC:</b>	1:200 - 1:1,000
<b>WB:</b>	1:1,000 - 1:5,000

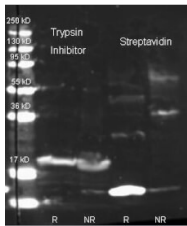
## Formulation

<b>Physical State:</b>	Lyophilized
<b>Concentration:</b>	1.0 mg/mL by UV absorbance at 280 nm
<b>Buffer:</b>	0.02 M Potassium Phosphate, 0.15 M Sodium Chloride, pH 7.2
<b>Preservative:</b>	0.01% (w/v) Gentamicin Sulfate. Do NOT add Sodium Azide!
<b>Stabilizer:</b>	10 mg/mL Bovine Serum Albumin (BSA) - Immunoglobulin and Protease free
<b>Reconstitution Volume:</b>	100 µL
<b>Reconstitution Buffer:</b>	Restore with deionized water (or equivalent)

## Shipping & Handling

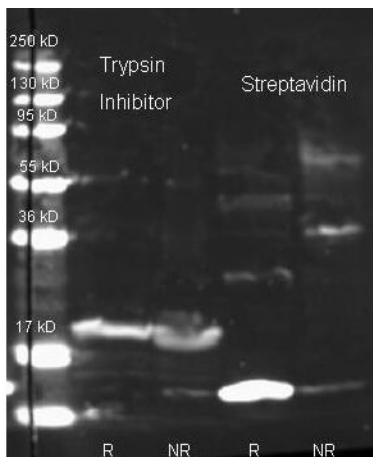
<b>Shipping Condition:</b>	Ambient
<b>Storage Condition:</b>	Store vial at 4° C prior to restoration. For extended storage aliquot contents and freeze at -20° C or below. Avoid cycles of freezing and thawing. Centrifuge product if not completely clear after standing at room temperature. This product is stable for several weeks at 4° C as an undiluted liquid. Dilute only prior to immediate use.
<b>Expiration:</b>	Expiration date is one (1) year from date of receipt.

## Images



### Western Blot

Western Blot of Rabbit Anti Trypsin Inhibitor antibody. Lane 1: purified Soybean Trypsin Inhibitor Reduced. Lane 2: purified Soybean Trypsin Inhibitor Non-Reduced. Lane 3: purified Streptavidin Reduced. Lane 4: purified Streptavidin Non-Reduced. Load: 1.0 ug per lane. Primary antibody: Biotin conjugated Rabbit anti-trypsin inhibitor antibody and Rabbit anti streptavidin 1:1000 for overnight at 4°C. Secondary antibody: Dylight 649 conjugated Donkey anti rabbit at 1:10,000 for 45 min at RT. Block: 5% BLOTTO overnight at 4°C. Predicted/Observed size: 25 kDa for Trypsin Inhibitor.



### Western Blot

Western Blot of Rabbit Anti Trypsin Inhibitor antibody. Lane 1: purified Soybean Trypsin Inhibitor Reduced. Lane 2: purified Soybean Trypsin Inhibitor Non-Reduced. Lane 3: purified Streptavidin Reduced. Lane 4: purified Streptavidin Non-Reduced. Load: 1.0 ug per lane. Primary antibody: Biotin conjugated Rabbit anti-trypsin inhibitor antibody and Rabbit anti streptavidin 1:1000 for overnight at 4°C. Secondary antibody: Dylight 649 conjugated Donkey anti rabbit at 1:10,000 for 45 min at RT. Block: 5% BLOTTO overnight at 4°C. Predicted/Observed size: 25 kDa for Trypsin Inhibitor.

## Disclaimer

This product is for research use only and is not intended for therapeutic or diagnostic applications. Please contact a technical service representative for more information. All products of animal origin manufactured by Rockland Immunochemicals are derived from starting materials of North American origin. Collection was performed in United States Department of Agriculture (USDA) inspected facilities and all materials have been inspected and certified to be free of disease and suitable for exportation. All properties listed are typical characteristics and are not specifications. All suggestions and data are offered in good faith but without guarantee as conditions and methods of use of our products are beyond our control. All claims must be made within 30 days following the date of delivery. The prospective user must determine the suitability of our materials before adopting them on a commercial scale. Suggested uses of our products are not recommendations to use our products in violation of any patent or as a license under any patent of Rockland Immunochemicals, Inc. If you require a commercial license to use this material and do not have one, then return this material, unopened to: Rockland Inc., P.O. BOX 5199, Limerick, Pennsylvania, USA.