

## Datasheet for 200-4351

## Catalase Antibody Peroxidase Conjugated

### Overview

|                      |  |
|----------------------|--|
| <b>Description:</b>  | Anti-Catalase (Bovine Liver) (RABBIT) Antibody Peroxidase Conjugated (BULK ORDER) - 200-4351 |
| <b>Item No.:</b>     | 200-4351   |
| <b>Size:</b>         | 20 mg  |
| <b>Applications:</b> | ELISA, WB  |
| <b>Reactivity:</b>   | Bovine   |
| <b>Host Species:</b> | Rabbit   |

### Product Details

|                      |   |
|----------------------|---|
| <b>Background:</b>   | Catalase is found in nearly all living organisms exposed to oxygen. It catalyzes the decomposition of hydrogen peroxide to water and oxygen. It is a very important enzyme in protecting the cell from oxidative damage by reactive oxygen species. |
| <b>Synonyms:</b>     | rabbit anti-Catalase Antibody Peroxidase Conjugation, HRP Conjugated rabbit anti-Catalase Antibody, Cas 1 antibody, CAT antibody, Cs1 antibody, MGC138422 antibody, MGC138424 antibody  |
| <b>Host Species:</b> | Rabbit  |
| <b>Conjugate:</b>    | Peroxidase (HRP)  |
| <b>Clonality:</b>    | Polyclonal  |
| <b>Format:</b>       | IgG   |

### Target Details

|                        |                         |
|------------------------|-------------------------|
| <b>Gene Name:</b>      | CAT                     |
| <b>Reactivity:</b>     | Bovine                  |
| <b>Immunogen Type:</b> | Native Protein          |
| <b>Immunogen:</b>      | Catalase [Bovine Liver] |

**Purity/Specificity:** Catalase is an IgG fraction antibody purified from monospecific antiserum by a multi-step process which includes delipidation, salt fractionation and ion exchange chromatography followed by extensive dialysis against the buffer stated above. Assay by immunoelectrophoresis resulted in a single precipitin arc against anti-Peroxidase, anti-Rabbit Serum as well as purified and partially purified Catalase [Bovine Liver]. Cross reactivity against Catalase from other tissues and species may occur but have not been specifically determined.

**Relevant Links:**

- [UniProtKB - P00432](#)
- [NCBI - AAI03067.1](#)
- [GenEID - 531682](#)

## Application Details

**Tested Applications:** ELISA, WB

**Application Note:** Anti-Catalase Peroxidase Conjugated Antibody has been tested by ELISA and western blot. This product is assayed against 1.0 ug of Catalase [Bovine Liver] in a standard capture ELISA using ABTS (2,2'-azino-bis-[3-ethylbenzothiazoline-6-sulfonic acid]) code # ABTS-100 as a substrate for 30 minutes at room temperature. A working dilution of 1:10,000 to 1:40,000 of the reconstitution concentration is suggested for this product.

**Assay Dilutions:** All assays should be optimized by the user. Recommended dilutions (if any) may be listed below.

**ELISA:** 1:10,000 - 1:50,000

**WB:** 1:500- 1:2,000

## Formulation

**Physical State:** Lyophilized

**Concentration:** 10 mg/mL by UV absorbance at 280 nm

**Buffer:** 0.02 M Potassium Phosphate, 0.15 M Sodium Chloride, pH 7.2

**Preservative:** 0.01% (w/v) Gentamicin Sulfate. Do NOT add Sodium Azide!

**Stabilizer:** 10 mg/mL Bovine Serum Albumin (BSA) - Immunoglobulin and Protease free

**Reconstitution Volume:** 2.0 mL

**Reconstitution Buffer:** Restore with deionized water (or equivalent)

## Shipping & Handling

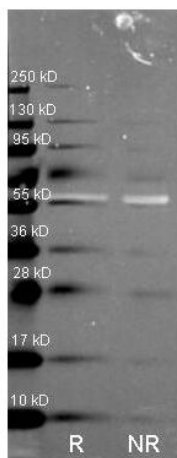
**Shipping Condition:** Ambient

---

|                           |   |
|---------------------------|---|
| <b>Storage Condition:</b> | Store vial at 4° C prior to restoration. For extended storage aliquot contents and freeze at -20° C or below. Avoid cycles of freezing and thawing. Centrifuge product if not completely clear after standing at room temperature. This product is stable for several weeks at 4° C as an undiluted liquid. Dilute only prior to immediate use. |
| <b>Expiration:</b>        | Expiration date is one (1) year from date of receipt.   |

---

## Images



### Western Blot

Western Blot of Rabbit anti-Catalase antibody. Lane R: Reduced samples of purified Catalase. Lane NR: Non-reduced samples of purified Catalase. Load: ~1ug of protein per lane. Primary antibody: Catalase antibody at 1:1000 for overnight at 4°C. Secondary antibody: Dylight488™ rabbit secondary antibody at 1:10,000 for 1.5 hrs at RT. Block: MB-070 overnight at 4°C. Predicted/Observed size: 59.9 kDa, 55 kDa for catalase. Other band(s): none.

## Disclaimer

This product is for research use only and is not intended for therapeutic or diagnostic applications. Please contact a technical service representative for more information. All products of animal origin manufactured by Rockland Immunochemicals are derived from starting materials of North American origin. Collection was performed in United States Department of Agriculture (USDA) inspected facilities and all materials have been inspected and certified to be free of disease and suitable for exportation. All properties listed are typical characteristics and are not specifications. All suggestions and data are offered in good faith but without guarantee as conditions and methods of use of our products are beyond our control. All claims must be made within 30 days following the date of delivery. The prospective user must determine the suitability of our materials before adopting them on a commercial scale. Suggested uses of our products are not recommendations to use our products in violation of any patent or as a license under any patent of Rockland Immunochemicals, Inc. If you require a commercial license to use this material and do not have one, then return this material, unopened to: Rockland Inc., P.O. BOX 5199, Limerick, Pennsylvania, USA.