

Datasheet for 200-4340S

Acid Phosphatase Antibody Peroxidase Conjugated

Overview

Description:	Anti-Acid Phosphatase (Potato) (RABBIT) Antibody Peroxidase Conjugated - 200-4340S
Item No.:	200-4340S
Size:	25 µL
Applications:	Dot Blot, WB
Reactivity:	Acid Phosphatase (Potato)
Host Species:	Rabbit

Product Details

Background:	Acid Phosphatase is a phosphatase, a type of enzyme, used to free attached phosphate groups from other molecules during digestion. It is basically a phosphomonoesterase. It is stored in lysosomes and functions when these fuse with endosomes, which are acidified while they function; therefore, it has an acid pH optimum. Different forms of acid phosphatase are found in different organs, and their serum levels are used to evaluate the success of the surgical treatment of prostate cancer.
Synonyms:	rabbit anti-Acid Phosphatase Antibody Peroxidase Conjugation, HRP conjugated rabbit anti-Acid Phosphatase Antibody, Acid phosphatase 1 soluble antibody, PAP3, Acid phosphatase of erythrocyte antibody, Adipocyte acid phosphatase antibody, Cytoplasmic phosphotyrosyl protein phosphatase antibody, HAAP antibody
Host Species:	Rabbit
Conjugate:	Peroxidase (HRP)
Clonality:	Polyclonal
Format:	IgG

Target Details

Gene Name:	PAP3
Reactivity:	Acid Phosphatase (Potato)
Immunogen Type:	Native Protein

Immunogen:	Acid Phosphatase [Potato]
Purity/Specificity:	Acid Phosphatase is an IgG fraction antibody purified from monospecific antiserum by a multi-step process which includes delipidation, salt fractionation and ion exchange chromatography followed by extensive dialysis against the buffer stated above. Assay by immunoelectrophoresis resulted in a single precipitin arc against anti-peroxidase, anti-Rabbit Serum as well as purified and partially purified Acid Phosphatase [Potato]. Cross reactivity against Acid Phosphatase from other tissues and species may occur but have not been specifically determined.
Relevant Links:	<ul style="list-style-type: none">• UniProtKB - Q6J5M8• NCBI - AAT37528.1

Application Details

Tested Applications:	Dot Blot, WB
Application Note:	Anti-Acid Phosphatase Peroxidase Conjugated Antibody has been tested by dot blot and western blot and is suitable for use in ELISA and immunohistochemistry. Specific conditions for reactivity should be optimized by the end user.
Assay Dilutions:	All assays should be optimized by the user. Recommended dilutions (if any) may be listed below.
WB:	1:250

Formulation

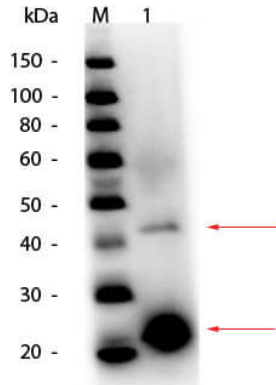
Physical State:	Liquid (sterile filtered)
Concentration:	1.0 mg/mL by UV absorbance at 280 nm
Buffer:	0.02 M Potassium Phosphate, 0.15 M Sodium Chloride, pH 7.2
Preservative:	0.01% (w/v) Gentamicin Sulfate. Do NOT add Sodium Azide!

Shipping & Handling

Shipping Condition:	Dry Ice
Storage Condition:	Store vial at -20° C or below prior to opening. This vial contains a relatively low volume of reagent (25 µL). To minimize loss of volume dilute 1:10 by adding 225 µL of the buffer stated above directly to the vial. Recap, mix thoroughly and briefly centrifuge to collect the volume at the bottom of the vial. Use this intermediate dilution when calculating final dilutions as recommended below. Store the vial at -20°C or below after dilution. Avoid cycles of freezing and thawing.

Expiration: Expiration date is one (1) year from date of receipt.

Images



Western Blot

Western Blot of Acid Phosphatase (Potato) Antibody. Lane 1: Acid Phosphatase (Potato). Load: 50 ng per lane. Primary antibody: Acid Phosphatase Antibody at 1:1,000 overnight at 4°C. Secondary antibody: HRP rabbit secondary antibody at 1:40,000 for 30 min at RT. Block: MB-070 for 30 min at RT. Predicted/Observed size: 49 kDa/42-45kDa for Acid Phosphatase (Potato) Protein. Other band(s): Acid Phosphatase monomer fragmentation.

Disclaimer

This product is for research use only and is not intended for therapeutic or diagnostic applications. Please contact a technical service representative for more information. All products of animal origin manufactured by Rockland Immunochemicals are derived from starting materials of North American origin. Collection was performed in United States Department of Agriculture (USDA) inspected facilities and all materials have been inspected and certified to be free of disease and suitable for exportation. All properties listed are typical characteristics and are not specifications. All suggestions and data are offered in good faith but without guarantee as conditions and methods of use of our products are beyond our control. All claims must be made within 30 days following the date of delivery. The prospective user must determine the suitability of our materials before adopting them on a commercial scale. Suggested uses of our products are not recommendations to use our products in violation of any patent or as a license under any patent of Rockland Immunochemicals, Inc. If you require a commercial license to use this material and do not have one, then return this material, unopened to: Rockland Inc., P.O. BOX 5199, Limerick, Pennsylvania, USA.