

Datasheet for 200-4337S

Glucose Oxidase Antibody Peroxidase Conjugated

Overview

Description:	Anti-Glucose Oxidase (RABBIT) Antibody Peroxidase Conjugated - 200-4337S
Item No.:	200-4337S
Size:	25 µL
Applications:	ELISA, WB
Reactivity:	Aspergillus niger
Host Species:	Rabbit

Product Details

Background:	Glucose Oxidase is an oxido-reductase that catalyzes the oxidation of glucose to hydrogen peroxide and D-glucono- δ -lactone. In cells, it aids in breaking the sugar down into its metabolites, used for the determination of free glucose in body fluids, and has many applications in biotechnologies.
Synonyms:	rabbit anti-Glucose Oxidase Antibody Peroxidase Conjugation, HRP Conjugated rabbit anti-Glucose Oxidase Antibody, Beta D Glucose Oxygen 1 Oxido Reductase antibody, Glucose oxidase (Precursor) antibody, Glucose Oxyhydrase antibody, GOD antibody
Host Species:	Rabbit
Conjugate:	Peroxidase (HRP)
Clonality:	Polyclonal
Format:	IgG

Target Details

Gene Name:	gox
Reactivity:	Aspergillus niger
Immunogen Type:	Native Protein
Immunogen:	Glucose Oxidase [Aspergillus niger]

Purity/Specificity: Glucose Oxidase is an IgG fraction antibody purified from monospecific antiserum by a multi-step process which includes delipidation, salt fractionation and ion exchange chromatography followed by extensive dialysis against the buffer stated above. Assay by immunoelectrophoresis resulted in a single precipitin arc against anti-Peroxidase, anti-Rabbit Serum as well as purified and partially purified Glucose Oxidase [*Aspergillus niger*]. Cross reactivity against Glucose Oxidase from other tissues and species may occur but has not been specifically determined.

Relevant Links:

- [UniProtKB - P13006](#)
- [NCBI - P13006.1](#)

Application Details

Tested Applications: ELISA, WB

Application Note: Anti-Glucose Oxidase Peroxidase Conjugated Antibody has been tested by ELISA and western blot and is useful in Immunohistochemistry. Optimal titers should be obtained by researcher.

Assay Dilutions: All assays should be optimized by the user. Recommended dilutions (if any) may be listed below.

ELISA: 1:5,000 - 1:25,000

IHC: 1:500 - 1:2,500

WB: 1:1,000 - 1:5,000

Formulation

Physical State: Liquid (sterile filtered)

Concentration: 1.0 mg/mL by UV absorbance at 280 nm

Buffer: 0.02 M Potassium Phosphate, 0.15 M Sodium Chloride, pH 7.2

Preservative: 0.01% (w/v) Gentamicin Sulfate. Do NOT add Sodium Azide!

Stabilizer: 10 mg/mL Bovine Serum Albumin (BSA) - Immunoglobulin and Protease free

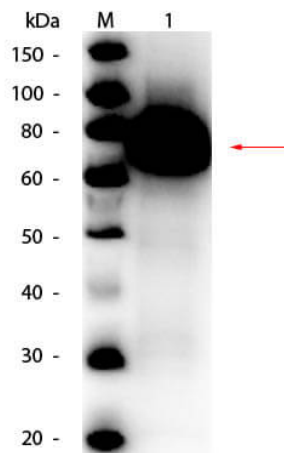
Shipping & Handling

Shipping Condition: Dry Ice

Storage Condition: Store vial at -20° C or below prior to opening. This vial contains a relatively low volume of reagent (25 µL). To minimize loss of volume dilute 1:10 by adding 225 µL of the buffer stated above directly to the vial. Recap, mix thoroughly and briefly centrifuge to collect the volume at the bottom of the vial. Use this intermediate dilution when calculating final dilutions as recommended below. Store the vial at -20°C or below after dilution. Avoid cycles of freezing and thawing.

Expiration: Expiration date is one (1) year from date of receipt.

Images



Western Blot

Western Blot of Rabbit anti-Glucose Oxidase Antibody Peroxidase Conjugated. Lane 1: Glucose Oxidase. Load: 50 ng per lane. Primary antibody: Rabbit anti-Glucose Oxidase Antibody Peroxidase Conjugated at 1:1,000 overnight at 4°C. Secondary antibody: n/a. Block: MB-070 for 30 min at RT. Predicted/Observed size: 66 kDa, 66 kDa for Glucose Oxidase. Detected using FEMTOMAX-110 substrate.

Disclaimer

This product is for research use only and is not intended for therapeutic or diagnostic applications. Please contact a technical service representative for more information. All products of animal origin manufactured by Rockland Immunochemicals are derived from starting materials of North American origin. Collection was performed in United States Department of Agriculture (USDA) inspected facilities and all materials have been inspected and certified to be free of disease and suitable for exportation. All properties listed are typical characteristics and are not specifications. All suggestions and data are offered in good faith but without guarantee as conditions and methods of use of our products are beyond our control. All claims must be made within 30 days following the date of delivery. The prospective user must determine the suitability of our materials before adopting them on a commercial scale. Suggested uses of our products are not recommendations to use our products in violation of any patent or as a license under any patent of Rockland Immunochemicals, Inc. If you require a commercial license to use this material and do not have one, then return this material, unopened to: Rockland Inc., P.O. BOX 5199, Limerick, Pennsylvania, USA.