

Datasheet for 200-4337-0100

## Glucose Oxidase Antibody Peroxidase Conjugated

### Overview

<b>Description:</b>	Anti-Glucose Oxidase (RABBIT) Antibody Peroxidase Conjugated - 200-4337-0100
<b>Item No.:</b>	200-4337-0100
<b>Size:</b>	100 µg
<b>Applications:</b>	ELISA, WB
<b>Reactivity:</b>	Aspergillus niger
<b>Host Species:</b>	Rabbit

### Product Details

<b>Background:</b>	Glucose Oxidase is an oxido-reductase that catalyzes the oxidation of glucose to hydrogen peroxide and D-glucono- $\delta$ -lactone. In cells, it aids in breaking the sugar down into its metabolites, used for the determination of free glucose in body fluids, and has many applications in biotechnologies.
<b>Synonyms:</b>	rabbit anti-Glucose Oxidase Antibody Peroxidase Conjugation, HRP Conjugated rabbit anti-Glucose Oxidase Antibody, Beta D Glucose Oxygen 1 Oxido Reductase antibody, Glucose oxidase (Precursor) antibody, Glucose Oxyhydrase antibody, GOD antibody
<b>Host Species:</b>	Rabbit
<b>Conjugate:</b>	Peroxidase (HRP)
<b>Clonality:</b>	Polyclonal
<b>Format:</b>	IgG

### Target Details

<b>Gene Name:</b>	gox
<b>Reactivity:</b>	Aspergillus niger
<b>Immunogen Type:</b>	Native Protein
<b>Immunogen:</b>	Glucose Oxidase [Aspergillus niger]

**Purity/Specificity:** Glucose Oxidase is an IgG fraction antibody purified from monospecific antiserum by a multi-step process which includes delipidation, salt fractionation and ion exchange chromatography followed by extensive dialysis against the buffer stated above. Assay by immunoelectrophoresis resulted in a single precipitin arc against anti-Peroxidase, anti-Rabbit Serum as well as purified and partially purified Glucose Oxidase [*Aspergillus niger*]. Cross reactivity against Glucose Oxidase from other tissues and species may occur but has not been specifically determined.

**Relevant Links:**

- [UniProtKB - P13006](#)
- [NCBI - P13006.1](#)

## Application Details

**Tested Applications:** ELISA, WB

**Application Note:** Anti-Glucose Oxidase Peroxidase Conjugated Antibody has been tested by ELISA and western blot and is useful in Immunohistochemistry. Optimal titers should be obtained by researcher.

**Assay Dilutions:** All assays should be optimized by the user. Recommended dilutions (if any) may be listed below.

**ELISA:** 1:5,000 - 1:25,000

**IHC:** 1:500 - 1:2,500

**WB:** 1:1,000 - 1:5,000

## Formulation

**Physical State:** Lyophilized

**Concentration:** 1.0 mg/mL by UV absorbance at 280 nm

**Buffer:** 0.02 M Potassium Phosphate, 0.15 M Sodium Chloride, pH 7.2

**Preservative:** 0.01% (w/v) Gentamicin Sulfate. Do NOT add Sodium Azide!

**Stabilizer:** 10 mg/mL Bovine Serum Albumin (BSA) - Immunoglobulin and Protease free

**Reconstitution Volume:** 100  $\mu$ L

**Reconstitution Buffer:** Restore with deionized water (or equivalent)

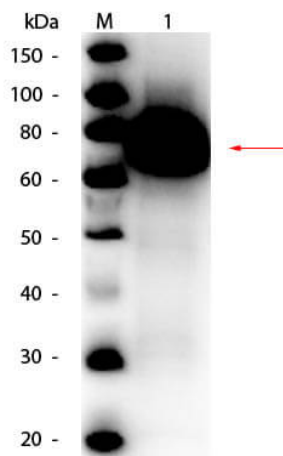
## Shipping & Handling

**Shipping Condition:** Ambient

**Storage Condition:** Store vial at 4° C prior to restoration. For extended storage aliquot contents and freeze at -20° C or below. Avoid cycles of freezing and thawing. Centrifuge product if not completely clear after standing at room temperature. This product is stable for several weeks at 4° C as an undiluted liquid. Dilute only prior to immediate use.

**Expiration:** Expiration date is one (1) year from date of receipt.

## Images



### Western Blot

Western Blot of Rabbit anti-Glucose Oxidase Antibody Peroxidase Conjugated. Lane 1: Glucose Oxidase. Load: 50 ng per lane. Primary antibody: Rabbit anti-Glucose Oxidase Antibody Peroxidase Conjugated at 1:1,000 overnight at 4°C. Secondary antibody: n/a. Block: MB-070 for 30 min at RT. Predicted/Observed size: 66 kDa, 66 kDa for Glucose Oxidase. Detected using FEMTOMAX-110 substrate.

## Disclaimer

This product is for research use only and is not intended for therapeutic or diagnostic applications. Please contact a technical service representative for more information. All products of animal origin manufactured by Rockland Immunochemicals are derived from starting materials of North American origin. Collection was performed in United States Department of Agriculture (USDA) inspected facilities and all materials have been inspected and certified to be free of disease and suitable for exportation. All properties listed are typical characteristics and are not specifications. All suggestions and data are offered in good faith but without guarantee as conditions and methods of use of our products are beyond our control. All claims must be made within 30 days following the date of delivery. The prospective user must determine the suitability of our materials before adopting them on a commercial scale. Suggested uses of our products are not recommendations to use our products in violation of any patent or as a license under any patent of Rockland Immunochemicals, Inc. If you require a commercial license to use this material and do not have one, then return this material, unopened to: Rockland Inc., P.O. BOX 5199, Limerick, Pennsylvania, USA.