

## Datasheet for 200-4188-0100

## Ribonuclease A Antibody

### Overview

<b>Description:</b>	Anti-Ribonuclease A (Bovine Pancreas) (RABBIT) Antibody - 200-4188-0100
<b>Item No.:</b>	200-4188-0100
<b>Size:</b>	100 µg
<b>Applications:</b>	WB
<b>Reactivity:</b>	Bovine
<b>Host Species:</b>	Rabbit

### Product Details

<b>Background:</b>	Pancreatic ribonuclease is an endonuclease that catalyzes the cleavage of RNA on the 3' side of pyrimidine nucleotides. It acts on single-stranded and double-stranded RNA. This ribonuclease can destabilize or unwind the DNA helix by complexing with single-stranded DNA; this complex arises by an extended multisite cation-anion interaction between the lysine and arginine residues of the enzyme and the phosphate groups of the nucleotides. It has endonucleolytic cleavage to nucleoside 3'-phosphates and 3'-phosphooligonucleotides ending in Cp or Up with 2',3'-cyclic phosphate intermediates.
<b>Synonyms:</b>	rabbit anti-Ribonuclease A Antibody, Pancreatic ribonuclease antibody, Rib 1 antibody, Rib1 antibody, Ribonuclease a family 1 antibody, Ribonuclease pancreatic antibody, Ribonuclease RNase A family 1 antibody, Ribonuclease RNase A family 1 pancreatic antibody
<b>Host Species:</b>	Rabbit
<b>Clonality:</b>	Polyclonal
<b>Format:</b>	IgG

### Target Details

<b>Gene Name:</b>	RNASE1
<b>Reactivity:</b>	Bovine
<b>Immunogen Type:</b>	Native Protein
<b>Immunogen:</b>	Ribonuclease A [Bovine pancreas]

**Purity/Specificity:** Anti-Ribonuclease A is an IgG fraction antibody purified from monospecific antiserum by a multi-step process which includes delipidation, salt fractionation and ion exchange chromatography followed by extensive dialysis against the buffer stated above. Assay by immunoelectrophoresis resulted in a single precipitin arc against anti-Rabbit Serum as well as purified and partially purified Ribonuclease A [Bovine pancreas]. Cross reactivity against Ribonuclease A from other tissues and species may occur but have not been specifically determined.

**Relevant Links:**

- [UniProtKB - P61823](#)
- [NCBI - AAI49530.1](#)
- [GenelD - 282340](#)

## Application Details

**Tested Applications:** WB

**Application Note:** Ribonuclease A Antibody has been tested by western blot and is suitable to be assayed against 1.0 ug of Ribonuclease A [Bovine pancreas] in a standard ELISA using Peroxidase conjugated Affinity Purified anti-Rabbit IgG [H&L] (Goat) code #611-1302 and (ABTS (2,2'-azino-bis-[3-ethylbenthiozoline-6-sulfonic acid])) code # ABTS-100 as a substrate for 30 minutes at room temperature. A working dilution of 1:40,000 to 1:180,000 is suggested for this product.

**Assay Dilutions:** All assays should be optimized by the user. Recommended dilutions (if any) may be listed below.

**ELISA:** 1:5,000 - 1:20,000

**IP:** 1:100

**WB:** 1:500 - 1:5,000

## Formulation

**Physical State:** Lyophilized

**Buffer:** 0.02 M Potassium Phosphate, 0.15 M Sodium Chloride, pH 7.2

**Preservative:** 0.01% (w/v) Sodium Azide

**Stabilizer:** None

**Reconstitution Volume:** 100 µL

**Reconstitution Buffer:** Restore with deionized water (or equivalent)

## Shipping & Handling

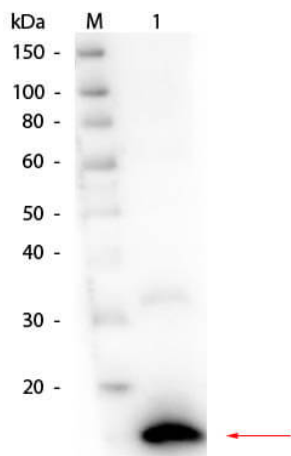
**Shipping Condition:** Ambient

---

<b>Storage Condition:</b>	Store vial at 4° C prior to restoration. For extended storage aliquot contents and freeze at -20° C or below. Avoid cycles of freezing and thawing. Centrifuge product if not completely clear after standing at room temperature. This product is stable for several weeks at 4° C as an undiluted liquid. Dilute only prior to immediate use.
<b>Expiration:</b>	Expiration date is one (1) year from date of receipt.

---

## Images



### Western Blot

Western Blot of Rabbit anti-Ribonuclease A (Bovine Pancreas) Antibody. Lane 1: Ribonuclease A (Bovine Pancreas). Load: 50 ng per lane. Primary antibody: Ribonuclease A (Bovine Pancreas) Antibody at 1:1,000 overnight at 4°C. Secondary antibody: HRP rabbit secondary antibody at 1:40,000 for 30 min at RT. Block: MB-070 for 30 min at RT. Predicted/Observed size: 16.5 kDa, 16.5 kDa for Ribonuclease A.

## Disclaimer

This product is for research use only and is not intended for therapeutic or diagnostic applications. Please contact a technical service representative for more information. All products of animal origin manufactured by Rockland Immunochemicals are derived from starting materials of North American origin. Collection was performed in United States Department of Agriculture (USDA) inspected facilities and all materials have been inspected and certified to be free of disease and suitable for exportation. All properties listed are typical characteristics and are not specifications. All suggestions and data are offered in good faith but without guarantee as conditions and methods of use of our products are beyond our control. All claims must be made within 30 days following the date of delivery. The prospective user must determine the suitability of our materials before adopting them on a commercial scale. Suggested uses of our products are not recommendations to use our products in violation of any patent or as a license under any patent of Rockland Immunochemicals, Inc. If you require a commercial license to use this material and do not have one, then return this material, unopened to: Rockland Inc., P.O. BOX 5199, Limerick, Pennsylvania, USA.