

Datasheet for 200-4179

Trypsin Inhibitor Antibody

Overview

| | |
|----------------------|--|
| Description: | Anti-Trypsin Inhibitor (RABBIT) Antibody (BULK ORDER) - 200-4179 |
| Item No.: | 200-4179 |
| Size: | 50 mg |
| Applications: | ELISA, WB |
| Reactivity: | Soybean |
| Host Species: | Rabbit |

Product Details

| | |
|----------------------|---|
| Background: | Trypsin inhibitor antibody is specific for soybean trypsin inhibitor. Soybean trypsin inhibitor inhibits trypsin, but also chymotrypsin and plasmin at a reduced level. SBTI has inhibitory effects towards plasma kallikrein and coagulation Factor Xa. Soybean trypsin inhibitor will not inhibit metalloproteases, tissue-based kallikrein, acid proteases, or thio proteases. |
| Synonyms: | rabbit anti-trypsin inhibitor antibody, 25 kDa trypsin inhibitor (Protease inhibitor 15 preproprotein) antibody, CRISP8 antibody, KTi antibody, Kti S antibody, KTi3 antibody, KtiS antibody, Kunitz trypsin inhibitor antibody, Kunitz type trypsin inhibitor A antibody |
| Host Species: | Rabbit |
| Clonality: | Polyclonal |
| Format: | IgG |

Target Details

| | |
|------------------------|-----------------------------|
| Gene Name: | KTi3 |
| Reactivity: | Soybean |
| Immunogen Type: | Native Protein |
| Immunogen: | Trypsin Inhibitor [Soybean] |

Purity/Specificity: Anti-trypsin inhibitor antibody is an IgG fraction antibody purified from monospecific antiserum by a multi-step process which includes delipidation, salt fractionation and ion exchange chromatography followed by extensive dialysis against the buffer stated above. Assay by immunoelectrophoresis resulted in a single precipitin arc against anti-Rabbit Serum as well as purified and partially purified Trypsin Inhibitor [Soybean]. Cross reactivity against Trypsin Inhibitor from other sources may occur but have not been specifically determined.

Relevant Links:

- [UniProtKB - P01070](#)
- [NCBI - P01070.2](#)
- [GeneID - 547831](#)

Application Details

Tested Applications: ELISA, WB

Application Note: Soybean trypsin inhibitor antibody has been tested by ELISA and western blot and is assayed against 1.0 ug of Trypsin Inhibitor [Soybean] in a standard ELISA using Peroxidase conjugated Affinity Purified anti-Rabbit IgG #611-1302 and (ABTS (2,2'-azino-bis-[3-ethylbenthiiazoline-6-sulfonic acid]) as a substrate for 30 minutes at room temperature. A working dilution of 1:3,000 to 1:12,000 of the reconstitution concentration is suggested for this product.

Assay Dilutions: All assays should be optimized by the user. Recommended dilutions (if any) may be listed below.

ELISA: 1:5,000 - 1:25,000

IP: 1:100

WB: 1:500 - 1:3,000

Formulation

Physical State: Lyophilized

Buffer: 0.02 M Potassium Phosphate, 0.15 M Sodium Chloride, pH 7.2

Preservative: 0.01% (w/v) Sodium Azide

Stabilizer: None

Reconstitution Volume: 5.0 mL

Reconstitution Buffer: Restore with deionized water (or equivalent)

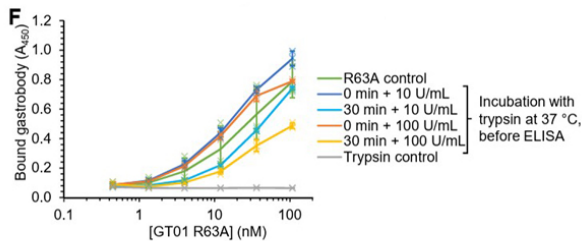
Shipping & Handling

Shipping Condition: Ambient

Storage Condition: Store vial at 4° C prior to restoration. For extended storage aliquot contents and freeze at -20° C or below. Avoid cycles of freezing and thawing. Centrifuge product if not completely clear after standing at room temperature. This product is stable for several weeks at 4° C as an undiluted liquid. Dilute only prior to immediate use.

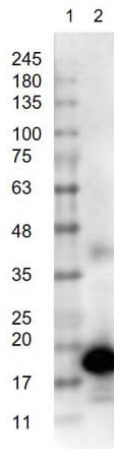
Expiration: Expiration date is one (1) year from date of receipt.

Images



ELISA

F) GT01 R63A binds to GTD after incubation with trypsin. GT01 R63A was incubated with 10 or 100 U/mL trypsin for 0 or 30 min. GT01 R63A (green) or trypsin-only controls (gray) were incubated for 30 min at 37 °C before ELISA. GT01 R63A binding to GTD was measured by ELISA. All error bars are mean ± 1 s.d., n = 3 with individual data-points as crosses. Supplementary Figure 8. PMID: 34381153



Western Blot

Western Blot of Rabbit Anti-Trypsin Inhibitor Antibody. Lane 1: Opal PreStained Molecular Weight Marker (p/n MB-210-0500). Lane 2: Trypsin Inhibitor [50ng]. Primary Antibody: Anti-Trypsin Inhibitor at 1µg/mL overnight at 2-8°C. Secondary Antibody: Goat Anti-Rabbit IgG HRP (p/n 611-103-122) 1:40,000 for 30mins at RT. Block: BlockOut Buffer (p/n MB-073) for 30mins at RT. Expect: ~25kDa.

Disclaimer

This product is for research use only and is not intended for therapeutic or diagnostic applications. Please contact a technical service representative for more information. All products of animal origin manufactured by Rockland Immunochemicals are derived from starting materials of North American origin. Collection was performed in United States Department of Agriculture (USDA) inspected facilities and all materials have been inspected and certified to be free of disease and suitable for exportation. All properties listed are typical characteristics and are not specifications. All suggestions and data are offered in good faith but without guarantee as conditions and methods of use of our products are beyond our control. All claims must be made within 30 days following the date of delivery. The prospective user must determine the suitability of our materials before adopting them on a commercial scale. Suggested uses of our products are not recommendations to use our products in violation of any patent or as a license under any patent of Rockland Immunochemicals, Inc. If you require a commercial license to use this material and do not have one, then return this material, unopened to: Rockland Inc., P.O. BOX 5199, Limerick, Pennsylvania, USA.