

Datasheet for 200-4168S**Elastase Antibody****Overview**

| | |
|----------------------|---|
| Description: | Anti-ELASTASE (RABBIT) Antibody - 200-4168S |
| Item No.: | 200-4168S |
| Size: | 25 µL |
| Applications: | ELISA, IF, Multiplex, WB |
| Reactivity: | Mouse |
| Host Species: | Rabbit |

Product Details

| | |
|----------------------|---|
| Background: | Anti elastase antibody detects elastase enzyme. Elastase breaks down elastin, an elastic fiber that, together with collagen, determines the mechanical proprieties of connective tissue. The specific peptide bonds cleaved are those on the carboxy side of small, hydrophobic amino acids such as glycine, alanine, and valine. Anti-Elastase Antibody is ideal for investigators in Cancer, Immunology, and Cardiovascular research. |
| Synonyms: | rabbit anti-Elastase Antibody, Fecal pancreatic elastase 1 antibody, HLE antibody, Medullasin antibody, Pancreatic elastase IIA antibody, PE 1 antibody, PE1 antibody, Protease E antibody |
| Host Species: | Rabbit |
| Clonality: | Polyclonal |
| Format: | IgG |

Target Details

| | |
|------------------------|-----------------------------|
| Gene Name: | CELA1 |
| Reactivity: | Mouse |
| Immunogen Type: | Native Protein |
| Immunogen: | Elastase [Porcine Pancreas] |

Purity/Specificity: Anti-Elastase is an IgG fraction antibody purified from monospecific antiserum by a multi-step process which includes delipidation, salt fractionation and ion exchange chromatography followed by extensive dialysis against the buffer stated above. Assay by immunoelectrophoresis resulted in a single precipitin arc against anti-Rabbit Serum as well as purified and partially purified Elastase [Porcine Pancreas]. Cross reactivity was reported for mouse Elastase (mouse embryonic pancreas). Cross reactivity against Elastase from other tissues and species has not been determined.

Relevant Links:

- [UniProtKB - P00772](#)
- [NCBI - NP_998988.1](#)
- [GenelD - 396766](#)

Application Details

Tested Applications: ELISA, IF, Multiplex, WB

Application Note: Anti-Elastase Antibody has been tested by ELISA, western blot, and immunofluorescence. This product is assayed against 1.0 ug of Elastase [Porcine Pancreas] in a standard ELISA using Peroxidase conjugated Affinity Purified anti-Rabbit IgG [H&L] (Goat) code #611-1302 and (ABTS (2,2'-azino-bis-[3-ethylbenthiiazoline-6-sulfonic acid]) code # ABTS-100 as a substrate for 30 minutes at room temperature. A working dilution of 1:1,000 to 1:5,400 is suggested for Anti-Elastase Antibody. An investigator has reported that this antibody works very well on sections of mouse embryonic pancreas tissue, specifically staining developing exocrine cells.

Assay Dilutions: All assays should be optimized by the user. Recommended dilutions (if any) may be listed below.

ELISA: 1:5,000 - 1:25,000

WB: 1:500 - 1:3,000

Formulation

Physical State: Liquid (sterile filtered)

Buffer: 0.02 M Potassium Phosphate, 0.15 M Sodium Chloride, pH 7.2

Preservative: 0.01% (w/v) Sodium Azide

Stabilizer: None

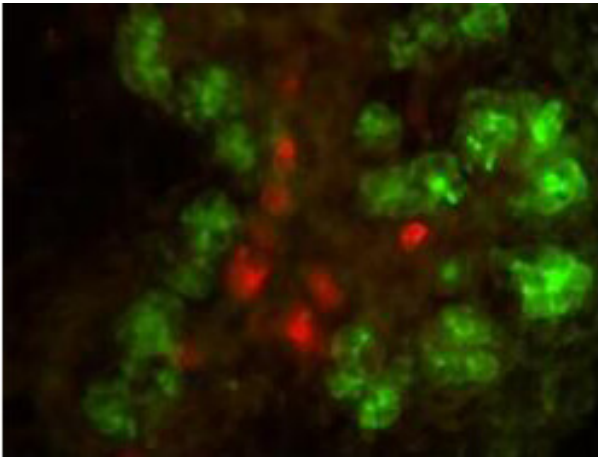
Shipping & Handling

Shipping Condition: Dry Ice

Storage Condition: Store vial at -20° C or below prior to opening. This vial contains a relatively low volume of reagent (25 µL). To minimize loss of volume dilute 1:10 by adding 225 µL of the buffer stated above directly to the vial. Recap, mix thoroughly and briefly centrifuge to collect the volume at the bottom of the vial. Use this intermediate dilution when calculating final dilutions as recommended below. Store the vial at -20°C or below after dilution. Avoid cycles of freezing and thawing.

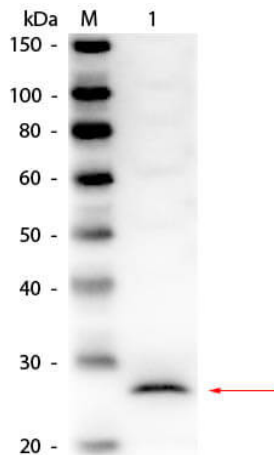
Expiration: Expiration date is one (1) year from date of receipt.

Images



Immunofluorescence Microscopy

Double immunofluorescence microscopy of Rabbit anti-Elastase antibody and anti-Insulin antibody. Tissue: mouse embryonic gut tissue. Fixation: 1 h in 4% PFA. Antigen retrieval: not required. Primary antibody: antibodies at 10 µg/mL for 1 h at RT. Secondary antibody: Fluorescein rabbit secondary antibody at 1:10,000 for 45 min at RT. Localization: elastase is secreted, extracellular. Staining: elastase as green fluorescent signal with insulin staining in red.



Western Blot

Western Blot of Rabbit anti-Elastase Antibody. Lane 1: Elastase. Load: 50 ng per lane. Primary antibody: Rabbit anti-Elastase Antibody at 1:1,000 overnight at 4°C. Secondary antibody: HRP rabbit secondary antibody at 1:40,000 for 30 minutes at RT. Block: MB-070 for 30 minutes at RT. Predicted/Observed size: 29 kDa, 29 kDa for Elastase.

Disclaimer

This product is for research use only and is not intended for therapeutic or diagnostic applications. Please contact a technical service representative for more information. All products of animal origin manufactured by Rockland Immunochemicals are derived from starting materials of North American origin. Collection was performed in United States Department of Agriculture (USDA) inspected facilities and all materials have been inspected and certified to be free of disease and suitable for exportation. All properties listed are typical characteristics and are not specifications. All suggestions and data are offered in good faith but without guarantee as conditions and methods of use of our products are beyond our control. All claims must be made within 30 days following the date of delivery. The prospective user must determine the suitability of our materials before adopting them on a commercial scale. Suggested uses of our products are not recommendations to use our products in violation of any patent or as a license under any patent of Rockland Immunochemicals, Inc. If you require a commercial license to use this material and do not have one, then return this material, unopened to: Rockland Inc., P.O. BOX 5199, Limerick, Pennsylvania, USA.